

ANNUAL REPORT

JULY 2021 - JUNE 2022



TABLE OF CONTENTS

Board Chair and CEO Letter	Page 3
July 2021 - June 2022 Fiscal Year Financial Statement	Page 4
UWM Highlights	Page 5
Recognizing Excellence	Page 12
Citizens of the Year	Page 13
Campaign Recognition	Page 15
Leaders in Giving	Page 19
Top 100 Companies	Page 20
Tocqueville Society	Page 21
Bridgebuilders	Page 25
Goodfellows	Page 34
Celebrating 100 Years	Page 45
A Century of Helping Others	Page 46
Forever United Fund	Page 49
Board of Directors	Page 50



BOARD CHAIR AND CEO LETTER

United Way friends and supporters,

Last year, as many people continued to face challenges related to the pandemic - coupled with the highest rate of inflation we've seen in decades - the demand for services from nonprofit organizations in the Omaha-Council Bluffs metro continued to grow. And just like local nonprofits across the metro stepped up their efforts to meet these increased needs, our generous community stepped up, as well.

In a true testament to the giving, caring spirit that runs deep in the Omaha-Council Bluffs metro - we were able to raise more than \$36 million this past year. Powered by our 2021 Campaign Chairs, Lance and Julie Fritz, and our amazing Board of Directors, we were encouraged to think bigger. Thanks to this leadership, United Way of the Midlands has expanded our community partnerships. We continue to work with organizations across our community who share our commitment to making a difference in the lives of individuals and families struggling to make ends meet.

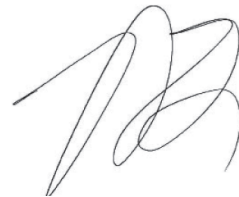
By bridging the business and not-for-profit sectors, we're able to raise the funds needed to invest in programs and deliver direct services to our community. We focus on addressing social and economic disparities and meeting families' essential needs such as healthy food, safe and stable housing, physical and mental health services, career preparation, job training and so much more.

Looking ahead to next year and our 100th year of helping others, we know we'll be able to address the challenges ahead with the support of generous community members like you.

We are grateful for your partnership.



Shawna Forsberg
President and CEO
United Way of the Midlands



Cory Shaw, Board Chair
Executive Vice President & COO
Nebraska Medicine



Fiscal year July 2021 - June 2022

FINANCIAL STATEMENT

REVENUE IN MILLIONS

Campaign Contributions	\$17.2
Program Revenue	\$19.7
Other Revenue Items (Grants, Fees, Investments, etc.)	(\$0.4)
Gross Revenue*	\$36.5

DISBURSEMENTS

Funding to Community Programs and Services	(\$27.7)
Community Services Provided by UWM	(\$8.0)
Fundraising and Operating Expenses	(\$3.2)
Total UWM Disbursements	(\$38.9)

EFFICIENCY RATIO

Greater than 95 cents of every dollar invested into the community. **

* After less allowance for collection loss the total net revenue is \$36.1 million.

** Calculated overhead rate, per generally accepted accounting principles is 10.3%. The difference between this and the more than 95 cents of donor dollars going to the community relates to nonprofit accounting requirements to include such things as in-kind gifts in both revenue and expense. Neither of these adds to or detracts from community investment, and when they cancel each other out from the calculation, the greater than cents reflects the true donor impact.



Fiscal year July 2021 - June 2022

UNITED WAY OF THE MIDLANDS HIGHLIGHTS

Thanks to the giving spirit that runs deep in the Omaha-Council Bluffs metro, and with the support of our 2021 Campaign Chairs Lance and Julie Fritz and the Union Pacific team, United Way of the Midlands (UWM) raised more than \$36 million for the 2021-22 fiscal year to give back to our community.

CIRCLE OF SUPPORT

By working with more than **600 organizations** and bridging the business and not-for-profit sectors - UWM is able to build awareness of community needs and form a circle of support to address those needs. As we've seen through recent floods and the pandemic, a strong network of human services is essential. We've been investing in this safety net since 1923 to ensure community members can access opportunity and provide the essentials for themselves and their family.



AN AGENT FOR CHANGE

UWM is proud to serve as a trusted agent for change, supported by volunteers who direct dollars where they are needed most. In fact, the community is one of the loudest and strongest voices in our funding decisions. More than 100 volunteers participated in the Community Investment Review Team process this year - reviewing a record 273 applications totaling over \$30 million in requests.

UWM was also honored to partner with Mayor Stothert and the **City of Omaha** team to invest \$5 million in ARPA funds for basic needs support into 34 programs over the next two years. In partnership with additional investments led by the Omaha Community Foundation, these funds will accelerate economic recovery, and serve high-need populations disproportionately impacted by COVID.

Additionally, and as part of our strategic plan, UWM launched the **Diversity Equity and Inclusion Fund** - with investments in 12 programs focused on racial equity as equity remains a key area of focus within our Community Care Fund. We also renewed our commitment to seven programs through **The Karnett Trust** and continue our longstanding partnership with 23 agencies through the **Combined Health Agencies Drive (CHAD)**.



Because of the community’s generosity, UWM increased the number of programs we were able to support through our traditional investment process. We are especially proud to offer these grants as multi-year funding as we return to two-year grants to provide stability and continuity in funding for programs.

Through all of these unique funding streams, UWM is investing in over 150 programs across the metro area. And across our investment portfolio we’ve focused our effort to address social and economic disparities – removing barriers, creating opportunity and strengthening the systems that people rely on in times of need.



SERVING OUR COMMUNITY OVER THE LAST YEAR, UNITED WAY AND OUR PARTNERS:



Provided more than **214,000 behavioral and physical health services** with 77% of clients achieving measurable improvements



Helped **5,000 families** stay in their homes



Served **18,000 children** through out-of-school-time, mentoring and other supportive academic programs



Distributed **8.6 million lbs. of food** including **nearly 10 million meals**



Provided **383,000 shelter nights, housing prevention services, and housing referrals**



Provided employment, credit or budgeting services to nearly **18,000 people**

ALWAYS EVOLVING

United Way's open, dynamic process ensures dollars are invested wisely, and includes accountability every step of the way. And while our strategic plan directed UWM to return to two-year grants, it also called upon United Way to remain flexible and adaptive as we evolve to meet the demands of the community.

Over the last year, government, business and nonprofit partners have increasingly invited us to the table - not only to invest in programs, but also to lead by filling service gaps that respond to emerging needs.

211 CONTACT CENTER

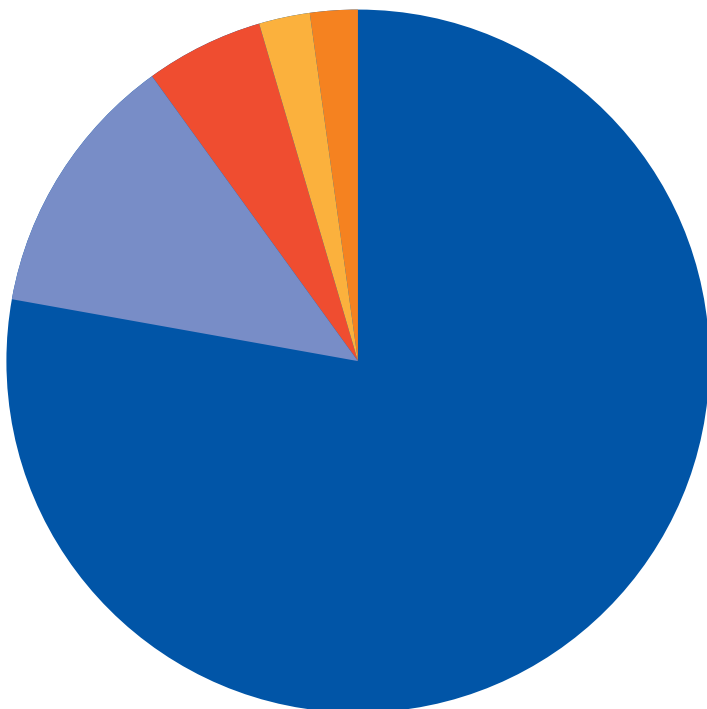
With more than **320,000 contacts** in the last fiscal year, United Way's 211 Contact Center has responded to the surge in demand and improved navigation for families through strategic partnerships. Our work with Children's Hospital, CyncHealth, Lyft, Metro Area Continuum of Care for the Homeless, Iowa Department of Public Health and Nebraska and Iowa United Ways means that families get the help they need faster.



Get Connected. Get Help.™

We are also grateful to **Senator Mike McDonnell** for prioritizing legislation and to members of the Nebraska State Legislature for providing critical funding to support the 211 Contact Center.

CALLERS' TOP 5 NEEDS



- 70%** Housing
- 11%** Utilities
- 5%** Income Support
- 2%** Healthcare
- 2%** Food

HOUSING AND UTILITIES ASSISTANCE

With more than half of 211 callers requesting support with housing and utilities, last year we expanded our work in housing stability, and the need continues to grow.

With the support of **MAACH, MUD, OPPD, Goodfellows** donors and our fabulous partner the **Omaha-World Herald**, we have provided more than **\$18 million** in rental, mortgage and utility assistance to help eligible Nebraskans stay in their homes.



MENTAL HEALTH

Beyond housing, the lingering effects of COVID plus rising inflation, have placed increased stressors on families.



MENTAL HEALTH FIRST AID
United in Heart and Mind

- **1 in 3** in our area are now experiencing symptoms of chronic depression
- Access challenges have doubled across income categories
- The demand for mental health services continues to grow

To help with these challenges, **Women United** have put their energy behind the **Mental Health First Aid (MHFA)** initiative. In partnership with Region 6 Behavioral Healthcare, this initiative will increase awareness and teach skills to respond to mental health challenges and substance abuse. To meet the increased need and demand, by the end of this year, we will provide MHFA training to **600 people**.

We are so grateful to Women United for their support and leadership on this important initiative.



JAG NEBRASKA

As we keep our fingers on the pulse of our community needs, we recognize the continuous impact COVID has had on our youth and young adults. In the Omaha-Council Bluffs metro area, the number of estimated disconnected youth has increased from 8,900 to approximately 12,000.

United Way's **Emerging Leaders** have stepped up to champion the **Jobs for America's Graduates (JAG)** program. JAG helps students develop skills and overcome challenges. During class, students build relationships with local employers, engage in project-based learning and do career research to lay the foundation for future work.

In the last year, JAG doubled the number of students served, achieved a **98% graduation rate** and exceeded all five national JAG standards. We are grateful to **Governor Ricketts, Commissioner Albin**, Emerging Leaders and more, as the program continues to grow annually. Our team of incredible in-school specialists now operate **24 programs** statewide, and we are working to ensure JAG is available to any student in need across the state.



UNITED WAY OF THE MIDLANDS EMERGING LEADERS

We have personally seen JAG Nebraska change lives as students become the first in their family to attend college and/or get living-wage jobs. To learn more about JAG Nebraska, please visit our new website, **JAGNebraska.org**, created by our friends at Smith Kroeger.

SHINE BRIGHT



There are many factors that influence student success. One affecting many students in struggling households is having to bathe without soap, or not being able to afford washing their clothes on a regular basis.

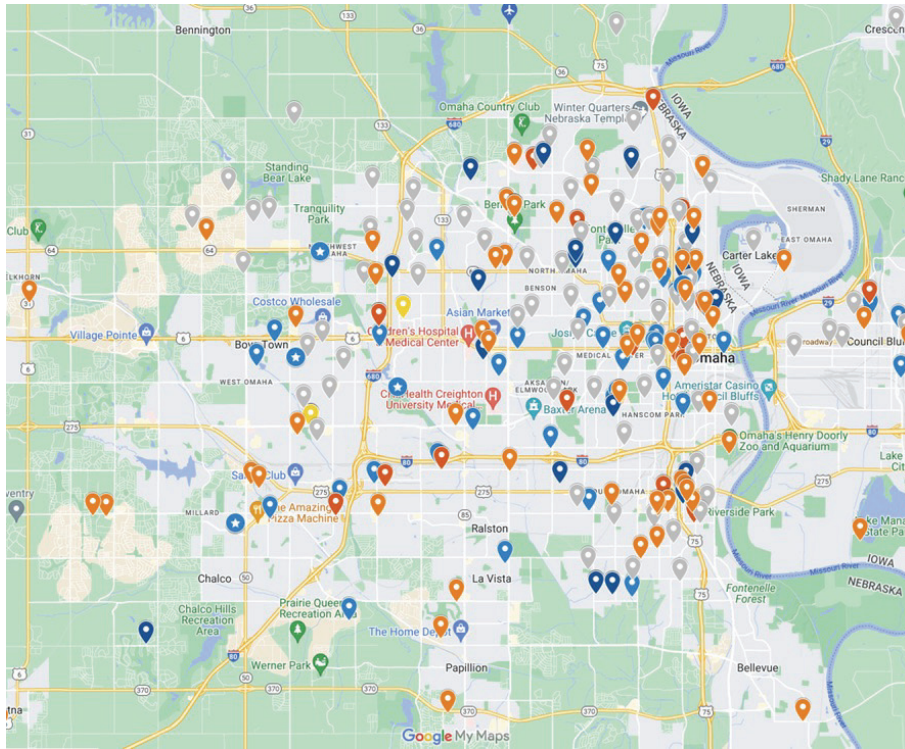
When **OPS Superintendent Dr. Cheryl Logan** invited United Way to partner with OPS to help students with hygiene, our volunteer network and the business community stepped up in a big way!

With the help of **American Enterprise Group, Penske, Turner Construction, Weiners LTD, Werner Enterprises** and hundreds of volunteers – we distributed **5,000 hygiene kits** to students in the Omaha and Council Bluffs Schools, JAG Nebraska programs and we expanded this year into the Papillion-La Vista school district. With inflation stressing families, we know these full-sized kits are making a difference!

EMBEDDED IN OUR COMMUNITY

From our numerous partnerships to our work through Shine Bright, 211 and more, we have been so humbled that our community trusts United Way to execute these life-changing programs. It's proof of our community's caring spirit, the value they place in United Way and our responsibility to build partnerships and deliver results when we face hard times.

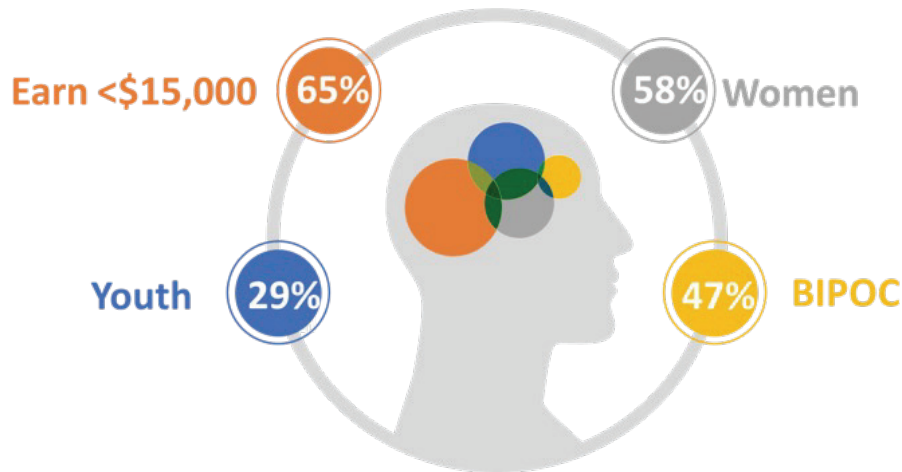
We are embedded in our community through program investments, direct services and critical partnerships. United Way continues to connect communities, and also leverage our unique capacity to serve statewide.



Embedded in our community through funding, direct services and partnerships

- Community Care Fund
- DEI Investments
- ARPA
- Karnett Trust
- Shine Bright
- JAG
- Other Partnership
- Court Referral

DEMOGRAPHICS OF CLIENTS SERVED BY UWM-FUNDED PROGRAMS DURING FISCAL YEAR 2021-2022



OUR MISSION

As community needs change and evolve - United Way of the Midlands will be here. We have seen our community battle wars and depression, and we've rallied together to respond to natural disasters and health crises.

Looking ahead, United Way will continue to UNITE our community in response to our toughest challenges - building a stronger tomorrow.

WATCH UWM'S CAMPAIGN VIDEO



RECOGNIZING EXCELLENCE

We recognize this year's Citizens of the Year and our Corporate Partner Award winners for going above and beyond to help our neighbors in need during the 2021-22 campaign.



JULIE AND LANCE FRITZ CITIZENS OF THE YEAR

Julie and Lance Fritz received the Citizens of the Year Award for their commitment and dedication to our community.



Lance M. Fritz is Union Pacific chairman, president and chief executive officer. He previously served as president and chief operating officer of Union Pacific Railroad, a position he had held since February 2014, after serving as executive vice president-Operations and vice president-Labor Relations, respectively. He began his Union Pacific career in July 2000 as vice president and general manager-Energy in the company's Marketing and Sales department.

Before joining Union Pacific, Fritz worked for Fiskars Inc., Cooper Industries and General Electric. He is a graduate of Bucknell University and earned a master's degree in management from the Kellogg School of Management at Northwestern University.

Fritz serves as a member of the board of directors of Parker-Hannifin Corporation. He is chair of the Business Roundtable trade and international committee, a member of the board of directors

for the Association of American Railroads, the Business Council and the Georgia Institute of Technology president's advisory board. He is also deeply involved with organizations in his local community. He is a member of the board of directors for Nebraska Medicine and Omaha Zoological Society and a previous board chair for United Way of the Midlands. He serves on the STRATCOM consultation committee and is the Omaha Business Ethics Alliance trustee chair.

A native of Rye, New York, Julie Fritz attended Bucknell University – graduating with a B.S. in mechanical engineering. She moved to Omaha in 2000, where she is active with many community organizations and causes: as a current and former board member for Habitat for Humanity, The Joslyn Art Museum and Film Streams; as a member of the Salvation Army's DJ's Hero selection committee and the Women's Auxiliary; as a member of United Way of the Midland's Women United steering committee and the Tocqueville Women's Advisory Council; and she is also actively involved with the Food Bank for the Heartland, Omaha Symphony, A Time to Heal, Creighton Prep, and All Saints Episcopal Church.

Lance and Julie have two children and are committed to helping women and children at risk in the Omaha community. The couple graciously served as the United Way of the Midlands campaign chairs in 2021.

Citizens of the Year Video



Lance Fritz Accepts the Citizens of the Year Award



50TH ANNIVERSARY CITIZENS OF THE YEAR

Louis E. Lipp, 1972
Kermit Hansen, 1973
James O. Bosworth, 1974
Charles D. Peebler, 1975
Jack L. Wilkins, 1976
Morris F. Miller, 1977
J.D. Anderson, 1978
Leo A. Daly, 1979
Ben R. Morris, 1980
V.J. Skutt, 1981
Willis Strauss, 1982
Eugene A. Conley, 1983
Del D. Weber, 1984
R. Jerry Hargitt, 1985
Jack R. Childs, 1986
Harold W. Andersen, 1987
Helen Cherniak, 1988
Donald A. Tollefson, 1989
Margre H. Durham, 1990
Charles M. Harper, 1991
Thomas R. Burke, 1992
Walter Scott, Jr., 1993
Marian Andersen, 1994
Richard K. Davidson, 1995
Roy Smith, 1996

Milton Abrahams, 1997
Sharon Marvin Griffin, 1998
John. G. Bookout, 1999
John Gottschalk, 2000
Suzanne Scott, 2001
John Nelson, 2002
Charles W. Durham, 2003
Ken Stinson, 2004
Terry Moore, 2005
Mogens & Cindy Bay, 2006
Howard L. & Rhonda A. Hawks, 2007
William & Barbara Fitzgerald, 2008
Bob & Judy Bates, 2009
Richard Holland, 2010
Dan Neary, 2011
Mike & Gail Yanney, 2012
Mike & Nancy McCarthy, 2013
Susie Buffett, 2014
Gary & Kathy Gates, 2015
Steve Martin & Dr. Amy Haddad, 2016
Bruce & Gerry Lauritzen, 2017
Paul & Annette Smith, 2018
Barbara & Wally Weitz, 2019
Mary & Rodrigo Lopez, 2020
Jim and Diane "Diny" Landen, 2021

50TH ANNIVERSARY VIDEO



2021 CAMPAIGN RECOGNITION AWARD WINNERS

The 2021 Campaign Partner Awards recognize businesses that went above and beyond to support United Way of the Midlands during the 2021-22 campaign.

Last year, more than 600 organizations supported United Way of the Midlands during the 2021-22 campaign, empowering us to create lasting change across our community. We believe the following awards capture the unique and varied nature of our partnerships: Volunteer Organization of the Year, New Business Partner of the Year, Corporate Partner of the Year – Leadership Donors and Corporate Partners of the Year. Because we know small organizations can still make a big impact, the Corporate Partner of the Year awards will once again be presented to companies within four different employee-size categories.

Our intent is to award a single winner in each category, but sometimes more than one organization merits receiving this award.

VOLUNTEER ORGANIZATION OF THE YEAR

This award recognizes companies who consistently strive to improve our community through volunteerism. The winning company was chosen based on the percentage of their employees who participated in UWM volunteer events during the 2021 campaign year.



Werner Enterprises was an essential partner for United Way’s volunteer efforts and events this past year. For both Shine Bright events in August 2021 and March 2022, the Werner Blue Brigade came to help with clean-up duties at the end of the busiest days. And for our latest Shine Bright event in August – Werner trucks and drivers moved 50,000 hygiene items from the storage facility they graciously

donated to UWM to the event site. In addition, they hosted a Good on the Go event where Werner employees put together healthy snack packs for young people at Completely Kids. Founded in 1956, Werner Enterprises is now one of the five largest truckload carriers in the United States and a transportation and logistics leader, with more than 8,000 trucks, 24,000 trailers and nearly 13,000 employees.

NEW BUSINESS PARTNER OF THE YEAR

This award recognizes businesses that recently chose to invest in our community through United Way of the Midlands and did not donate to United Way in the prior campaign year. As a first-time campaign partner in 2021, **Hudl** leveraged a corporate match to encourage employee giving and they were able to raise over \$8,950 for United Way.



Founded in 2006, **Hudl** is a Lincoln-based organization and a leading performance analysis company that’s revolutionizing the way coaches and athletes prepare for and stay ahead of the competition. They offer a complete suite of products that empower more than 180,000 global sports teams at every level to gather insights with video and data.

CORPORATE PARTNER OF THE YEAR - LEADERSHIP DONORS

This new award recognizes organizations who achieved significant growth with leadership donors - Tocqueville Society and Bridgebuilders.



UNMCSM
**Nebraska
Medicine**

Nebraska Medicine and the University of Nebraska Medical Center placed a great emphasis on leadership donors - crafting specific messages to their employee base and encouraging those who could to give at a significant level - leading to their campaign raising more than \$450,000.

During their campaign, Nebraska Medicine's Dr. Linder created a matching program where employees who gave \$5,000 would be matched at this level, granting them membership in the Tocqueville Society. Through their efforts, Nebraska Medicine and UNMC were able to secure 70 leadership donors, including 49 who did not give at this level in 2020.

Nebraska Medicine and UNMC can trace their roots back to 1869 with the founding of Omaha's first hospital. Today, they have over 9,000 employees, including 1,000 affiliated physicians. They operate two hospitals and 88 specialty and primary care clinics, have become a regional leader in cardiovascular and neurosciences, and have developed an international reputation in oncology, transplant and biocontainment.

CORPORATE PARTNERS OF THE YEAR

These awards are presented to companies in four different size categories. The selection criteria include year-over-year campaign growth, average gift per donor and participation rate.

Under 100 Employees - Greater Omaha Chamber



The Greater Omaha Chamber had an incredible 75% participation rate in their campaign and were able to raise more than \$25,000 for United Way. They have also been a significant partner for over 30 years and have played a role in much of our work, including the Strategic 4Sight initiative, and their employees are

heavily involved and have served on our Campaign Cabinet, Community Investment Review Team, and Emerging Leaders Steering Committee.

The Greater Omaha Chamber's mission is to champion a thriving business community and a prosperous region through visionary leadership and collaboration. It is one of the country's largest, strongest chambers, serving as an advocate, catalyst, and partner to its more than 3,000 member businesses.

Under 100 Employees - Holland Basham Architects

Holland Basham Architects

For last year's campaign, **Holland Basham** was able to grow their participation percentage to more than 70% and raised over \$18,000 for United Way - and this partnership that has been going strong for over 25 years.

Founded in Omaha in 1989, today Holland Basham operates locations in Omaha, as well as Denver, and are proud to offer a comprehensive range of architecture and design services. At their core, they are an architecture and design firm that puts clients first. They pair their talent, expertise and industry experience with the unique vision of each client, resulting in a superior design that works and lasts.

100-199 Employees - Scoular



Scoular's 2021 campaign saw their participation rate grow...and this, along with a corporate match, led to their campaign growing by more than \$60,000 from 2020 to 2021. A partner of United Way of the Midlands for over 30 years, their commitment to UWM has always been strong. Their growth from 2020 to 2021 resulted in \$190,000 raised for our community!

An Omaha-based corporation, Scoular was founded in 1892 and they are dedicated to the buying, selling, storage, handling and processing of grain, feed and food ingredients. Today, they've grown to over \$6 billion in annual sales with more than 1,000 employees operating from over 100 offices, grain elevators and processing facilities in North America and Asia.

200-799 Employees - American National Bank



American National Bank has generously donated to our community through UWM for over 30 years, and they won this category in 2020. During the 2021 campaign, they continued their growth in a significant way by developing a Tocqueville step-up program. This helped secure new leadership donors and more than doubled the amount raised in 2020 from \$45,000 to over \$90,000.

American National was established as The Bank of Florence Territory in Nebraska in 1856. Since that time, they have grown to become one of the largest banks in the region with major operations in Nebraska, Iowa and the Twin Cities in Minnesota. They employ over 440 employees and remain headquartered in Omaha.

200-799 Employees - Tenaska



Tenaska has been an incredible partner of United Way of the Midlands for over 30 years. During the 2021 campaign, they continued their history of strong participation and also heavily emphasized leadership giving. Through these efforts, they were able to grow their leadership donor base with 11 new members.

Together, they grew by more than \$65,000 year-over-year, and were able to raise more than \$430,000 for our community.

Tenaska was founded as a five-person operation in 1987 in Omaha with plans to build one or two power plants. Today, Tenaska is one of the largest privately held companies in the United States, a 700-person-strong organization that's adept in natural gas marketing, power management, development and acquisition of generation assets, operation of power plants and more.

Over 800 Employees - Union Pacific Railroad



BUILDING AMERICA®

Union Pacific Railroad has been an essential partner of United Way of the Midlands for many decades. This year they continued their traditional campaign efforts and were also able to increase the participation percentage among their Omaha-based employees.

U.P. also became funders of JAG Nebraska and hosted

their first Golf for Good Charity Golf event, with UWM as the beneficiary. Altogether, Union Pacific was able to raise over \$1.3 million for the 2021 Campaign.

Founded in 1862, Union Pacific has been building America for more than 150 years. Starting with the construction of the first transcontinental railroad, through multiple economic crises and conflicts - Union Pacific remains a trusted mainstay on America's landscape. Today, they are North America's premier railroad franchise, covering 23 states, operating over 7,000 locomotives, serving over 10,000 customers, and employing over 30,000 individuals.

LEADERS IN GIVING

Because of the generosity of these donors and companies, thousands of people received support to get back on their feet.



TOP 100 COMPANIES

United Way of the Midlands recognizes the companies that raised the most for our community during the 2021-22 campaign.

We are truly grateful to the Omaha-Council Bluffs community and how they come together each year to support United Way of the Midlands. And we are extremely thankful for the more than 600 partner organizations we have the privilege to work with. We'd also like to extend our special gratitude to the top 100 companies who raised the most during the last fiscal year.





TOCQUEVILLE SOCIETY

The Alexis de Tocqueville Society is comprised of those donors who give at a level of \$10,000 or more annually.

Since the Tocqueville Society was first founded in 1988, they have been championing the work of United Way, giving to those who need it most and encouraging others to do the same. It's because of their generosity that to date, more than **\$117 million** in Tocqueville donations have been invested back into our community.

Thanks to the leadership of our 2021 Campaign Chairs, Lance and Julie Fritz, UWM surpassed Mr. Warren Buffett's Tocqueville Membership Challenge - reaching **373 members** and increasing his generous match of United Way of the Midlands' campaign. We are truly grateful to Mr. Buffett as this remarkable achievement resulted in an additional \$367,000 being invested into the Omaha-Council Bluffs metro.

TOCQUEVILLE SOCIETY

Million Dollar Circle - \$1,000,000 or more

Warren Buffett
Robert B. Daugherty Foundation
Carmen and John Gottschalk
Ellen Karnett Trust
Peter Kiewit Foundation
Peter Kiewit Endowment

Ronald M. Lewer
Suzanne and Walter Scott
Ann and Kenneth Stinson
Sheila and R. Ted Weschler
And 2 Anonymous Donors

Investor - \$100,000 to \$249,999

Robert A. Risk and Karen G. Risk Trust

Siemer Institute for Family Stability

Pacesetter - \$75,000 to \$99,999

Henry A. Davis
Matt Dwyer

Gerry and Bruce Lauritzen
John and Elizabeth Lauritzen Foundation

Builder - \$50,000 to \$74,999

Lyle Kline
Mammel Family Foundation

Joan Gibson and Donald Wurster
And 1 Anonymous Donor

Patron - \$25,000 to \$49,999

Judy and Jack Baker
Cindy and Mogens Bay
Carl Riley Brodersen Charitable Trust
Ann and Jerry Crouse
Marshall E. Faith
Julie and Lance Fritz
Rhonda and Howard Hawks
Addie and Robert Hollingsworth
Donna and Matthew Johnson
Julie and Eric Keen

Steph and Jack Koraleski
Susan and Michael Lebens
Julie and Paul Maass
Kathy and Calvin Meyer
Ruth and William Scott
Betiana and Todd Simon
Annette and Paul Smith
Deb and J. Keith Spackler
Robert H. Storz Foundation

Guardian - \$20,000 to \$24,999

Krista and Mickey Anderson
Cassie and Eric Arneson
Andrea and Trevor Barton
Dennis P. Circo
Diane Duren and Drew Collier
Kim and Tom Egan
Deryl F. Hamann
Joan Squires and Daniel Hamann
Gilbert M. and Martha H. Hitchcock
Foundation
Wende and John Kotouc
Patty and C.L. Landen
Emily and Clark Lauritzen

Linda and Larry Pearson
Stacie and Robert Reed
Carole and Mark Sandeen
Stacy A. Scholtz
Kathy and Jim Simpson
Martha and D. David Slosburg
Elizabeth and Kelvin Whited
And 2 Anonymous Donors

Advocate - \$15,000 to \$19,999

Ann and Ed Batchelder
Susan Beeghly
Paula and James Blackledge
Susan and Irvin Blumkin
Chris and Ronald Blumkin
Maureen and Nicholas Borman
Esther and Daniel Brabec
Susan and Pat Courtney
Dr. C.C. and Mabel Criss Memorial
Foundation
Linda Daugherty
Sandra and Drew Fossum
Karen and Kim Hawkins
Lori and Paul Hogan

Larissa L. Johnson
Patricia and Stephen Kaniewski
Diny and Jim Landen
Nancy and Michael McCarthy
The Noddle Family Charitable Foundation
Rita and Don Otis
Loretta and Douglas Patterson
Robert A. Reed
Debra and Thomas Sanders
Kristi and Cory Shaw
Fred and Eve Simon Charitable Foundation
Polly and Jack Struyk
And 3 Anonymous Donors

Champion - \$10,000 to \$14,999

Daun and Leonard Adams
Marian Andersen
Tali and Avner Applbaum
Shirley Young Armitage and Dr.
James Armitage
Kimberly S. Arnold
Danielle and Dr. Michael Ash
Jamie Barker
Megan Belcher
Jean C. Bell
Jacqueline and Mark Bendon
Gail and Dr. Raymond Bergan
Dr. Samuel M. Bierner and
Joseph W. Pinson
Teresa and Scott Binder
Annie and Dr. Kenneth Bird
Dr. Sabin R. Bista
Tammy and Andrew Blossom
Lisa Freifeld and James Boles
Prentiss Bolin, Jr.
Malorie J. Bolton
Danielle and Dana Bradford
Linda and Matt Brandl
Joanne and Gerald Bray
Tracy and Ted Bridges
Crystal and Brian Brislen
Tami and Patrick Brookhouser
Maggie and David Brown
Lori Bruck and Dave Neubauer
Dr. Anne and Stephen
Bruckner
Terri and Timothy Burke
Renee and John Campbell
Dr. James T. Canedy
Lynda and Ted Carter
Elizabeth and Michael Cassling
Cassling Family Foundation
Doreen and Joseph Catapano
Nancy and Tony Chacon
Chanda and Carlo Chacon

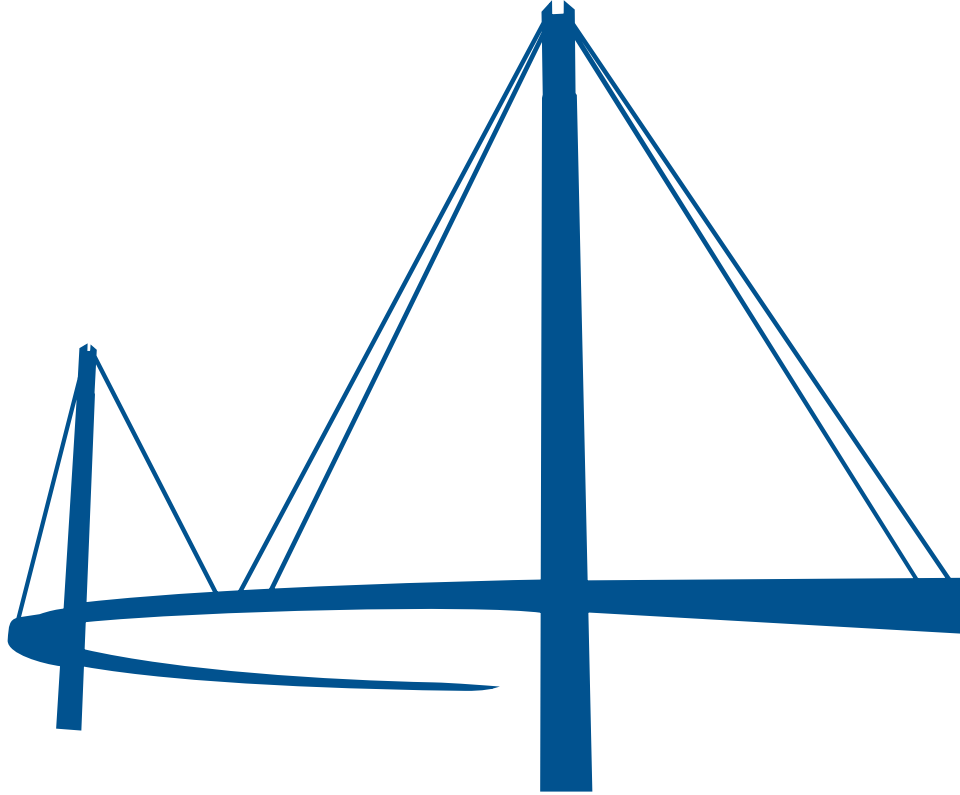
Joan and Bryan Clark
Patricia and Richard Cornish
Laura and Jason Coyle
Anna L. Cramer
Nancy and Gregory Crawford
Mary and Timothy Crockett
Stephanie and Howard
Daubert
Elisa and Drew Davies
Gail and John DeBoer
Leslie and Matthew DeBoer
Carolyn and David Diamond
Mariana and Josh Dixon
Meg Lauritzen Dodge and Nate
Dodge
Kate and N. P. Dodge, Jr.
Jan and Michael Doiel
Tim Donahue
Ana and Rafael Dorador
Kay and Jon Doyle
Amy and Kyle Droescher
Lori and Tom Druse
Melissa and Patrick Duffy
Pamela and David Duzik
Rae and William Dyer
Danielle and Grant Empson
Elizabeth and Dr. Max Engel
Alison and Quint English
Dr. Debra Esser
Jan M. Evans
Nathan Ewert
Jill and David Faith
Stephen J. Farrell
Kenneth D. Feaster
Darlynn and Tom Fellman
Deb and Rex Fisher
Jason Fisher
Shawna and Grant Forsberg
Shelley and Michael Foutch
Elizabeth and Timothy Francis

Drs. Harris and Jan Frankel
Allen Fredrickson
Christopher M. Garinger
Kathy and Gary Gates
Carol and Michael Geary
Rebecca and Eric Gehringer
Mindy and William Geis
Kathy and William Gerber
Jennifer and David Giandinoto
Brady and Ryan Gibson
Robin and Dr. Jeffrey Gold
Danielle and Jeff Gordman
Stephanie and J.R. Gould
Barb and Steve Grandfield
Anne and James Greisch
Brenda and Bret Griess
Theresa and Robert Gunia
Ia and Jason Hagan
Sissy and Billy Hagstrom
Marnie and William Hahn
Thomas C. Haley
Jennifer Hamann and Kippy
King
Carey and Brian Hamilton
Jason L. Hansen
Traci and Timothy Harrison
Marianne and Fred Hawkins
Kathleen and Tom Heaney
Clarence E. Heaney, Jr.
Gregory A. Heckman
Cindy and Scott Heider
Lisa and Terry Helpfrey
Amy and John Henderson
Carol Henrichs
Kimberly and Jason Hess
Heidi Higgason and Brad
Negrete
Terri and Scott Hill
Julie and Jeff Hinchcliff
Dennis P. Hogan, III

Ray R. Hollingsworth
Dan Houghton
Susan and Richard Hrabchak
Fred R. Hunzeker
Lauren and Michael Hupp
Dr. Katie and Grant Hutchins
Shefali and Rahul Jalali
Dawn and David Johnson
JoAnn and Dr. Dwight Jones
Kristen and John Kampfe
Matthew J. Kasselmann
Jill and Shane Keller
E. Lyle Kinley, Jr.
Kari and Daniel Kinsella
Kari and David Kirchhoefer
Maureen and Richard Kizer
Kent Knudsen
Naga Sravana Pedarla and
Rama Kolli
Jane Campbell and Steve
Konnath
Howard M. Kooper
Drs. Jillyn and Christopher
Kratochvil
Jackie and Terry Kroeger
Drs. Ivey Thornton and Ronald
Krueger
Kari and Timothy Kudron
Vivek Kumar
Diane Larkin
Robin and Ken Larsen
Marisa Salinas and Claudio
Laterreur
David L. Lautenschlager
Kim and Kenneth Lawonn
Nicole and Derek Leathers
Diana and Michael
Lechtenberger
Trish and David LeCureux
Michelle and Christopher
Leitner
Karen and Dr. James Linder
Donna Walsh and Grant
Lippincott
Emily and Thomas Lischer
Juliette and Dr. Steven Lisco
Heidi and Todd Litjen
Dr. Ashley Wysong and Dr.
Robert Lobato
Tina and Daniel Lonergan
Mary and Rodrigo Lopez
Collette and Andrew Lozier
Jan and David Madsen
Nicolette and William Manhart
Drs. Roslyn and Peter Mannon
Raveen D. Mansharamani

Elizabeth and Dr. Rodney
Markin
Dr. Amy Haddad and Steven
Martin
Trina and Scott McCollister
Theresa and Gregory
McDermott
Joan and Timothy McGill
Ashley and Nathan McKown
Teri and Matthew Mercer
Tiffany and Galen Meysenburg
Adah and Leon Millard
Foundation
Rondalyn and Robert Mitchell
Joseph H. Moglia
David J. Moline
Sherri and Bradley Moore
Danene Tushar and Scott
Moore
Jill and George Morrissey
Shirley and Daniel Neary
Anne and John Nelson
Kyle and Michael Nelson
Jason Ramirez and Mary Ann
O'Brien
Jerry J. O'Flanagan
Lisa and Stephen Olson
Valerie and Matt Ondrejko
Alison and Daniel O'Neill
Kay and Robert Owen
Lisa and Tyler Owen
Jill and Jon Panzer
Brooke and Joshua Perkes
Hollye and Terry Peterson
Nathan Peterson
Gary and Dr. Cassandra Pietrok
Lisa and Clark Ponthier
Lori and Kevin Quinn
Teri and Ronald Quinn
Susan and Royce Ramsay
Rita and Larry Rasmussen
Ginny and Martin Reagan
Lynda and John Reed
Valerie and Craig Richardson
Anne and Dr. Matthew Rizzo
April and Kenny Rocker
Dr. Debra J. Romberger
Kim Rowell
Shannon and Jeffrey Royal
Amy and Michael Ryan
Kelly and Todd Rynaski
Barbara and Ronald Schaefer
Kathryn and Aaron Schapper
Lori and Greg Schilling
Polina and Robert Schlott
Teresa and Roch Schmitz

Beth and Harley Schragger
Dr. Pamela and Greg Schwalb
Dianne and John Scott
Suzann and Steve Seline
Becky and Jeff Sharp
Mindy and Jon Simon
Dr. Kari Simonsen
Patti and Jeffrey Sims
Marilyn and Dr. Michael Sitorius
Slezak Family Charitable
Foundation
Ellen and Richard Slosburg
Shannon and David Spargo
Joanna and Kurt Spieler
Willis A. & Janet Schaefer
Strauss Fund
Marilee and Tim Struthers
Desiree and Michael Summers
Bob and Carmen Tapio
Ava Thomas
Ellen and Scot Thompson
Angela and Dr. William Thorell
Carl Tims
Tracy and Matthew Tondl
Mari and Daniel Torres
Tammy Trilli
Julie and John Turner
Gretchen and Steven Twohig
Karamie and Justin Vala
Bryn and Frank Venuto
Shelby and Dr. Scott Vincent
Julie and James Wajda
Drs. Phyllis Warkentin and
Peter Coccia
Marcia A. Washkuhn
Dr. Katie Weitz
Barbara and Wallace Weitz
Joni W. Wheeler
Brenda and Kevin Wichman
Jane and Douglas Wignall
Ann E. Williams
Christine and Clint Williams
Dr. Beth and Timothy Wilson
Pati and Daryl Wittstruck
Candace and Randy Wood
Tara and Brian Woolfolk
Marsha and Mark Wright
Sarah and Adam Yale
Dr. Gail and Michael Yanney
Jill and Andy Yosten
David P. Young
Jennifer and Christopher
Zimmers
And 22 Anonymous Donors



BRIDGEBUILDERS

Established in 1989, the Bridgebuilders Society recognizes individuals and families making annual gifts of \$1,000 to \$9,999. Such gifts represent a level of community participation and involvement which helps bridge the gap between the increasing needs in our community and the services available to meet them. There are more than 1,500 local Bridgebuilders strengthening the local community through their support of United Way of the Midlands.

Platinum - \$7,500 to \$9,999

John L. Beacom
Katherine M. Betsworth

And 2 Anonymous Donors

Gold - \$5,000 to \$7,499

Sally G. Bekins
Brick J. Bennington
Teresa N. Carnazzo
Kenneth C. Coon
Mickey Coren
David E. Cota
Dan Dougherty
Rebensdorf Family Foundation
John Fleming
Jean Grem
Gary Grosz
Joel and Katie Guenther Charitable Fund
Gary Hannibal
James Haynes
Bradley P. Hinton
Brian L. Ketcham
Jeremy S. Koeppe
T. Geoffrey Lieben
Steven C. Likes

E. Robert Newman
Don and Rita Otis Charitable Checkbook
Jeremy D. Reinoehl
James M. Richardson
Ron Rowe
Sydney E. Sowl
Kelly Staup
Amy M. Stogdill-Bennington
Joe Strickland
Amy Swartwood
Matthew L. Swartwood
L. B. Thomas
David J. Tomlinson
Stephen D. Torpy
Sheila R. Trueblood
Tom Walker
Verne A. Weber
Tom L. Young
And 6 Anonymous Donors

Silver - \$2,500 to \$4,999

Stephen J.
Gabriel Adler
Paul Ailslieger
Kathryn Marie Anderson
Katherine M. Anderson-Hiemstra
Jeff Armstrong
Dwayne M. Asche
Sara M. Athen
Rebecca Barta
Shane L. Beardslee
Jaime Bland
Ann Blaya
Gary L. Bohn
Sebastian Borowik
Amy J. Bouchard
Robert A. Braun
Michael L. Brown
Bradley J. Brummund
Shawn D. Buchanan
Ken J. Bunnell
Michael S. Campie
Kyle P. Canning
Tammy J. Carlson

Michael V. Carstens
James M. Chambers
Drew T. Clark
Kary M. Cluck
Wayne Clure
Ronda J. Colling
Patrick J. Corrigan
Jill J. Coyne
James C. Crampton
Judith Crosby
Thomas J. Culross
Jen Cunningham
Ellen Dasher
James E. Davenport
John C. Deeble
Eric J. Downing
Derong Duckett
John S. Dugger
Kim F. Duncan
James Eatherton
Christopher C. Fairchild
Seana Fairchild
Sara Flores

Tom and Tamara Foley Charitabe Fund

Darrin J. Freeman
Jay M. Frisbie
John A. Fuller
Carl Garrison
David R. Gast
Todd J. Gilroy
Miranda Gloden
Jeffrey D. Gohr
Jeff C. Gonka
Linda Gordman
Maureen Graziano
R. Michael Gross
Patrick Groves
Nancy A. Gruwell
Tracy L. Gulden
David M. Hahn
Kevin Halstead
Richard A. Hardin
Andrea E. Hargus
Bryan M. Hearn
John M. Heck
Teresa M. Hecker
Daniel Heimann
Chandra R. Henley
Heidi M. Hoke
William M. Honke
Jean D. Hruby
Jeffrey R. Huether
John A. Ivester
Cindy M. Jodlowski
Eric M. Johnson
Waverly Jones
Howard J. Kaslow
Katherine Kelly
Tara D. Knapp
Gerald S. Knapp
Harry D. Koch
Tara L. Kramer
Phillip Kreski
Derek S. Kruse
Robin M. Lally
Robert A. Lane
Jeremy J. Lang
Cindy S. LaPole
Roger L. Lewandowski
Kevin Lewis
Anil Luthra
Mark Lutz
Carl J. Macchietto
Molly M. Maguire
Melissa A. Matczak

Elizabeth A. Mazzotta
Denise M. McCauley
Josh Mellinger
Charles E. Melton
Joan Menard
Michael Michalski
Jenny Mickeliunas
Paul F. Miller
Timothy P. Moran
Melissa Moreno
Cindy Munchrath
Katherine Novak
Eric B. Oxley
John G. Papproth
Dennis Pate
Amy M. Patterson
Dean E. Poppe
Elizabeth A. Powell
Nancy L. Pridal
Timothy L. Prince
Edward F. Prosser
Chad Quinley
Ronald W. Reagan
John D. Rever
Brandon Rich
Charles William Richardson
Lisa M. Richardson
Silvia Roffman
Scott Rogge
Jill Samuelson
Mike Santa-Maria
Christine M. Sanz
Gaye Lynn Schaffart
Joseph Schaffart
Jeffery W. Schovanec
Andrew Schroder
Ryan T. Schroer
Corrie E. Shumaker
Jesse Shumaker
Pamela Skidmore
David and Martha Slosburg Family Trust
Alan Smiley
Gary P. Smith
John J. Steele
Karen E. Stevens
Joanne M. Stewart
Christopher L. Stockman
Holly Stockman
Bryan Stout
Joseph T. Sullivan
James C. Summerfelt
Darcelle M. Swope

Shane E. Swope
Lorianne Tartaglione
Laura A. Tatten
Zachary Thiemann
Brenda L. Thompson
Greta R. Vaught
Yuri P. Veomett
Leslie J. Volk
Jerold B. Vuchak
Stephen A. Wagner
Thomas D. Waldman
Joel M. Warner
David J. Warren

Tamela Webb
Mark A. Weber
Albert T. Whittaker
Kimberly M. Whittaker
Alexander J. Wolf
Andrew H. Wong
Anthony Youngblood
Alyssa A. Zabloudil
Lori L. Zarkowski
Carrie A. Zoucha
Kenneth Zoucha
And 39 Anonymous Donors

Bronze - \$1,000 to \$2,499

A. William Abts
Steven Aikman
Brook Aken
Rajanikanth Alaparathi
Gladys D. Aldrich
Corey C. Aldy
Brandi L. Alexander
Angela Allen
Larry Anderson
Bruce Anderson
Karin E.I. Anderson
Roy Anderson
Tammy L. Anderson
Amy L. Andrews
Brenda A. Anson
Michael G. App
Sean D. Applegate
Manuel Arambulo
Jeremy L. Archer
Tawny A. Archer
Kim M. Argo
Kimberly S. Armstrong
Jeffrey C. Ash
Joseph C. Ashley
Lori A. Asmus
Terry J. Atkinson
Stacy A. Auman
April A. Ayres
Jennifer Backhuus
Larry J. Bailey
Amy S. Bailey
Meikyn Bailey
Michael N. Bailey
Paul H. Bails
Gary H. Baker
Sean B. Baker
Brice A. Ballard
Mark A. Baratta
K.P. Barjenbruch
Lisa Barnes
Patrick A. Barry
Jennifer A. Bartholomew
Melissa E. Bartunek

John Bauer
Beau T. Baumert
Conner J. Baxter
Lana J. Bayless
Pam L. Beall-Hill
Michael Beatie
Teresa A. Beaufait
Norma Beck
Cody Beguin
April Behnke
Julie A. Behrends
David Bekaert
Ruth Ann Belding
Orion Chad Bell
Dave Bellairs
Suleiman Bello
Benjamin Bemis
Matt Bendler
William D. Benner
Christin Benson
Dale Berg
Richard A. Berry
Leslie A. Biehl
Tory M. Bishop
Marvin J. Bittner
Manny Bizarro
Shane Blair
Richard L. Blamble
Eric R. Blick
Marvin S. Blocker
Emily R. Blodgett
Tamara M. Blum
Laura E. Boardman
Lance B. Bockelman
Todd Boehne
John G. Bogatz
David B. Boles
Amy S. Bones
Richard K. Bonness
Paul D. Borseth
John D. Boudreau
Shilpa Bourampeta
Vivekananda R. Bourampeta

Kevin S. Bradley
Anne L. Branigan
Alan Brinkman
Bret M. Brocky
Susan Marie Brookhouser
Jerrold W. Brott
Tracey R. Brown
Wayne D. Brown
Kathleen J. Brown
Matt J. Brown
Pamela Brown
Paul Brown
Martha Bruckner
Martha Mary Bruckner
Helmut E. Brugman
Michael Bryan
Penny E. Bryant
Clifford Buckingham
John E. Buckley
Timothy Kevin Buderus
Dannie Buelt
Max J. Burbach
Matthew D. Burke
Gregory Burke
JoDee M. Burke
Gilbert W. Burket
Patreice S. Burkhalter
George S. Burkoski
Kevin E. Burr
J. Richard Burrows
Cameron Burt
Marc C. Butterfield
Cecil D. Bykerk
John Byrnes
Thaddeus A. Call
Craig T. Callahan
Lori J. Calub
Jason Calvert
Bernard Cameli
Patti Cameli
Christopher Campbell
Mark Campbell
Roshelle E. Campbell

Sherry L. Capazo
Amber K. Carman
Nanette Carmody
Wils and Jennie Carr
Benjamin C. Carrick
Benjamin Carson
Yvonne Carter
Steven J. Caruso
Carla A. Casper
Gregory P. Cassalia
Anna L. Castner Wightman
Kelly Caverzagie
Angel Champion
Regina Chapman
John A. Chekal
Larry Cherney
Blane E. Chesnut
David H. Chicoine
Michael G. Choiniere
Cullen J. Chollett
Roberta L. Christensen
Scott A. Christensen
Stefanie K. Christensen
Edwin Christensen
Tracey L. Christensen
Kathleen A. Christiansen
Dennis Christianson
Karen K. Clark
Michelle J. Clark
Kris K. Clark
Trisha R. Clary
Stephanie Cleary
Nathan L. Coberly
Samuel M. Cohen
Ryan Cole
Douglas Collins
Paul Concannon
John H. Conley
Tonya Conley
Janis Connealy
Royce E. Connerley
Edmond G. Connolly
John Connor
Timothy C. Connors
Matthew Conrad
Liz Cook
Roger D. Cook
Warren H. Cooke
Gary L. Cooper
Scott D. Cooper
Martie J. Cordaro
William R. Cordes
Thomas Corrigan
Matthew Coufal
Bart Cox
Michael W. Cozad
Laurie Cradick
David Craft
Heather M. Craig
Douglas S. Craven
James M. Crawford
Melissa J. Crawford
Paul Cremeens
Jerad Croghan
Trudi Crosby

Gary L. Crouch
Mary Crouch
Jordan Cruz-Alfaro
Jodi L. Culp
Krystal Cunningham
Christine R. Curtis
Nicholas T. Dafney
Thomas H. Dahlk
Alexander Dahlquist
Zaida Daisley
Nandita M. Dalal
Kevin Damme
Jay E. Daubman
William B. Davis
William F. Davis
Peter Decher
Dawn M. DeGeorge
Aaron Delashmutt
Heather K. Delmas
Laura K. Demman
Deborah K. Denney
Robin Dennie
Michael James Devereaux
Terrance S. Dewald
Taylor C. Dieckman
Roy Dinsdale
Joe Dirks
Chad R. Dittberner
Lance E. Dixon
Jeremy Michael Dixon
Michael T. Dobel
Denise Dolezal
James B. Dombrowski
Brian J. Donahoe
William L. Donaldson
Meredith Dougherty
Stephanie R. Dougherty
Anthony Dowling
Mark Doyle
Julie D. Driftmier
Aaron O. Dubberly
Tara Duda
Walter C. Duda
Bradley Dunbar
Catrina P. Dunbar
Isaac Dupree
Scott Durbin
Mary Anne Dworak
Stacy Ebeling
Jeremy C. Eddie
Christopher V. Edwards
Gwen F. Edwards
Tonya S. Eggspuehler
Matthew R. Eibes
Kelli S. Eickhoff
Joshua M. Eiden
Richard Ekstrom
Darci L. Elam
Michael J. Elland
Mark J. Ellinger
Don D. Elliott
Christopher A. Ellis
Stephanie Ellis
Juli M. Engelsman
James D. Engle

Kathy L. English
Don Erftmier
Dave S. Erker
Joseph A. Evans
Joel T. Falk
Woodman Family Charitable Fund
James C. Farley
Nicholas J. Ferrara
Kathryn Fiantt
Louise Madonna Finkenbinder
Matt Finnegan
Terrence Finney
Eric Fleming
Eric Fleming
Katryna Floersch
Linda Flott
Brian P. Flynn
Jeff E. Focht
William T. Foley
Michael L. Fosdick
Garret Fosmer
Randy Fouts
Frank Fowler
Thomas Fowler
Richard B. Frankenberger
Mark Frantz
Debra K. Frazier
Stacy K. Friis
Shelley R. Fulton
Sheril Ann Galde
Harry J. Gallagher
Steven Gallaher
David E. Gannon
James S. Garbina
Brian Lewis Garcia
Javier Garcia
Paul Garcia
Torry Garland
Betsy S. Gassaway
Marilyn Gaudreault
Carol Gendler
Aji George
Julie M. Gerken
Kenneth E. German
David Germer
Scott Geske
Bryson J. Gibbs
Angelo R. Gibson
Daniel Gilg
John W. Gilliam
Christopher D. Goble
Karla J. Gochenour
David Godberson
Wade D. Goehring
Mark Goodrich
Josette Gordon-Simet
Alec Gorynski
Elise Gosch
James Gould
James P. Grabenbauer
Gail A. Graeve
Cindy Gray
Christopher E. Greer
Beth A. Greiner
Timothy C. Greiner

Mark E. Grieb
 Stephanie L. Griger
 Dennis K. Grindle
 Garret W. Groathouse
 Daniel B. Gruenes
 Michael P. Guinane
 Jon C. Gum
 Sherri L. Gunderson
 Monique Gunn
 Roberta L. Gunning
 Kathryn Gurnett
 Alison M. Gutierrez
 Timothy M. Hacker
 Cynthia Hadsell
 Leslie D. Hagg
 Howard Fredrick Hahn
 Chris F. Halfman
 Susan Hall
 John A. Hall
 Thomas J. Halpin
 Brandon D. Hamm
 Sandra J. Ham-Malouf
 Rami S. Hanash
 John W. Hancock
 Jack and Peg Hannam Fund
 Gregory Hanson
 Daniel M. Hanus
 Lisa A. Hanus
 Jianqiang Hao
 Lynn Harland
 Brian L. Harr
 Jeffrey D. Harriswon
 Kellie R. Harry
 Gary K. Harvey
 Charles Haskell
 Amy L. Hatcher
 Justin Haugen
 Mary B. Hawkins
 William H. Heavey
 Bambi Lynn Heckerman
 Mark Heeney
 David L. Hefflinger
 James Heimann
 Bradley K. Heisey
 Laura A. Heisterkamp
 Jerry Helgoth
 William H. Henderson
 Stephanie L. Henn
 Tiffany D. Henn
 Bob Henrichs
 Katherine Henry
 Adam Henry
 John W. Herdzina
 Steven Joseph Hermansky
 Roger J. Hermsen
 Brad Herrboldt
 Jamie Herrman
 Margaret C. Hershiser
 Christina L. Hinton
 Brett Hiscock
 Shannon M. Hite
 Byron Robert Hobson
 Jason R. Hoellen

Douglas J. Hoff
 Erik O. Hoiekvam
 Jeffery A. Holden
 Jake R. Holdenried
 Timothy F. Holland
 Stephanie Hollinger
 Richard A. Holmes
 Daniel C. Holoch
 Harold D. Holoun
 Paul Holubeck
 Michael J. Homa
 John J. Hoodjer
 William Horan
 Christi Hornick
 Diana L. Hough
 Randall Hough
 Julia A. Hoult
 Sheri Howard
 Danielle S. Howell
 Nancy Huber
 Charles D. Huddleston
 James V. Huerter
 Todd G. Huffman
 Scarlett V. Hughes
 Jay Y. Huh
 Allan Hull
 Benjamin S. Humann
 Teresa C. Hunter
 Allison A. Hurt
 Scott J. Huscroft
 Westly K. Hutcherson
 Hasan Hyder
 Daniel G. Hyslop
 Alison E. Ingunza
 Maureen Irish
 Eliot V. Irons
 Michelle Jackson
 Dean and Maria Jacobsen Donor
 Fund
 Lonnie Janecek
 Lee Alan Janecek
 Philip J. Janulewicz
 Deborah A. Janzen
 Mindy M. Jarecki
 John H. Jeanetta
 Howard P. Jeffers
 Aaron Jensen
 Marnie A. Jensen
 Carrie Jensen
 Jennifer Wolfe Jerram
 Jared W. Jessen
 Jamie M. Johns
 Joe C. Johns
 Nathan A. Johns
 Dave Johnson
 Amelia Johnson
 Clint Johnson
 James Johnson
 Jay C. Johnson
 Ken Johnson
 Michael C. Johnson
 Richard D. Johnson
 Wallace Johnson

Wesley A. Johnson
 Bryan Jones
 Jeffrey R. Jorth
 Susan Joseph
 Jeff M. Judkins
 Richard C. Jungman
 Christina D. Kahler
 Christopher M. Kalkowski
 Tonya N. Kaminski
 Satya Kamireddi
 Kris Karnes
 Edward J. Kaspar
 Cindy K. Kastens
 Randy E. Kathol
 Kevin L. Kaup
 Janelle K. Kay
 Patricia M. Keairnes
 Chris Keckeisen
 Ranae Keckeisen
 Scott L. Keep
 Kathleen Keiser
 Brandyn Keithley
 Sonya Kelly
 Michael and Barbara Kelly
 Charitable Fund
 Carl D. Kempkes
 Daniel J. Kennelly
 Joseph A. Kenny
 Andrew Kenny
 James A. Kerkhove
 A. William Kernen
 Patrick S. Kilcoyne
 Rachael Kimball
 Dylies King
 James King
 Jon Kinney
 Gary W. Kipp
 Jesse A. Kirby
 Adam Kirkebak
 Michael Kist
 Doug W. Klahn
 Anita K. Klanderud
 Carmen R. Klein
 David R. Klein
 Jeffrey Klement
 Daniel B. Kline
 Brianne L. Kloewer
 Bridget L. Knaub
 Jude M. Knipper
 Mihaela Kobjerowski
 Timothy Koch
 Kelly J. C. Koch
 Larry Kochen
 Michael C. Koehler
 Christy L. Kofoed
 David A. Kolarik
 Debra L. Kopecky Hansen
 Corey S. Kopiasz
 Christopher R. Kopiasz
 L. James Kortan
 Christopher Koslosky
 Mick A. Kozisek
 Neal Krauss

Jason M. Kremer
Margaret A. Kriha
Santha D. Krishnan
Kenneth M. Kroeger
Tony Kroenke
Bradley A. Kruger
Matthew L. Kruse
Catherine E. Kuester
Kurt Kuhlman
Prakash Tarachand Kukreja
Thomas R. Kunkel
Renaë M. Kurmel
Jacqueline Kay Kuta
Scott A. Kvammen
Christi Labs
Alan E. LaFollette
Karen A. Lagerstrom
Jim Laguzza
Nick J. Lampe
Kevin C. Langin
Gregory C. Lanning
Rick Larmore
Douglas J. Law
Courtney E. Lawrenson
Michelle L. Lee
Ronald J. Lee
Weslyene R. Lee
Lisa M. Lehan
Mark E. Lehman
Scott A. Leighton
Lori Lentsch
Kimberly S. Lesinski
Roger L. Lewis
Susan L. Lewis
Daniel Lilley
Joseph M. Lillo
Dean Limbach
Steve P. Lindsay
Daniel Lindsay
Joel M. Link
Brian Little
Susan Lobsiger
Frank S. Lococo
Michael T. Loeffler
Marlon M. Lofgren
Alicia S. Loftus
Cheryl J. Logan
Robbie Long
Ruben Lopez
Julie L. Luedtke
Marietta E. Luellen
Katherine A. Lunzmann
Quan P. Ly
Colee Maass
Jonathan A. Macapinlac
Christopher Mack
Diane Mack
Thomas C. Macy
John S. Maczynski
William Thomas Madden
Terry Magnuson
Daragh Mahon
Ted Maine
Alisha A. Malcolm
Timothy A. Malik

Christopher G. Maloney
Charles Manternach
Joyce Marasco
Lori Marco
Delette Marengo
James Marion
Nicholas J. Marquardt
Brian Marta
Aaron J. Martens
Heather Ann Martin
Joseph M. Martin
Michelle Martinson
German Martos
Roger Andrew Massey
Shana L. Matheny
Martin J. Matukewicz
Andrew E. Max
Robert Maxwell
Terrill Maxwell
Maria Mayorga
Kirt V. McAlpine
Corrigan L. McBride
Liza N. McCabe
Edward V. McCarty
Joseph McCaslin
Pamela I. McCawley
Jill M. McClure
Tamela L. McCreadie
Mike and Karen McCreery
Michael McDoniel
Patrick Ryan McGill
Jeffrey J. McGuire
Elise McHatton
Mark E. McKenzie
Steven Mckern
Michael J. McLarney
Daniel C. McLaughlin
Tim S. McMahan
Mark A. McQuade
Jared Meays
David F. Medeiros
Kenneth R. Meier
Nathan Meisgeier
Andrew S. Melville
Merri J. Melvin
Eric Mensch
Justin Earl Mergens
Richard D. Meuret
Chase M. Meyer
Philip W. Meyer
Matthew Meyer
Michael P. Meyers
George Mickells
Mary K. Millard
Matt L. Millard
Gary L. Miller
Sarah E.W. Miller
Mark W. Miller
Michael Miller
Sara J. Milnes
Craig Mitchell
Matthew W. Modica
Nigel B. Moodley
Kevin J. Moran
James Morbach

Michael C. Morong
John F. Morris
Kathryn J. Morris
Mindy C. Morrissey
Robert G. Morrow
Perry Mostek
Cindy Mowery
Lori K. Mueller
Stephanie M. Mueller
Michelle M. Muirhead
Tracy L. Mumford
Brian J. Mundt
Kevin Murphy
Theresa M. Murphy
Donald M. Murray
Megan Murray
Brian Myers
William Naidenovich
Elizabeth Nannen
Gerald V. Navarra
Cindy Nelson
Mark S. Nelson
Guy Nelson
Matthew J. Nelson
Catherine A. Neppel
Kellie K. Neth
Christine A. Neuharth
Debbie Newkirk
Augie T. Nguyen
Margaret M. Nguyen
Julie Nielsen
Stephen Nielsen
Masahide Niiya
Jeanne M. Nissen
Troy J. Nissen
Allan S. Noddle
Nathan D. Nolte
Michael Patrick Noonan
Marty H. Nordlund
Travis J. Nordstrom
Cody Norland
Joshua K. Norton
Richard A. Norton
Dean Nosbisch
Russell Novak
Larry B. Novicki
Leonard and Esther Nowak
Charitable Fund
Thomas P. Nussrallah
Chase Nuzum
Jason Oberembt
Douglas Obermeier
Gustavo Oberto
Cory J. O'Brien
Kelli Erin O'Brien
Timothy O'Brien
Laura B. O'Connor
Maureen M. O'Connor
Garrett J. Odell
Susan E. Ogle
David P. O'Hara
Danielle Ohlman
Michele M. Okon
Douglas Scott Oldaker
Brock Oldre

Jeff Oles
John R. Oliver
David Olson
Gary Olson
Steven J. Olson
Karen C. O'Neill Potts
Ronda Onsager
Kay Ontiveros
Brian J. Oppliger
Simona I. Oprea
David M. Orchard
Jill S. Orton
Paul D. Osborne
Shawn N. Ossenfort
Victoria Owens
Jennifer Paisley
Brenda L. Paiz
Albert J. Palimenio
Jacqueline Palmer
Ryan R. Paradis
Jennifer R. Parker
Zane Parkhurst
Matthew E. Parry
Shane D. Parshall
Sheryl Parshall
Frank Partsch
Geneva R. Patterson
Janette M. Patterson
Melanie S. Patton
Mike Pauls
Kyle Payne
Steven Peake
Clint Pella
Jackie Pella
Christine M. Pellman
Danielle Penke
Ronald Peoples
Lisa A. Perkins
Donald A. Perrault
Carolyn J. Peters
Mark E. Peters
Nancy F. Peters
Wade Petersen
Kathleen Peterson
Michael W. Peterson
Patricia S. Peterson
John L. Petr
Kelli D. Peyton
Aaron J. Pfeifer
Alicia Pfeifer
Mark D. Pfeifer
Christopher D. Phillips
Julie A. Phillips
Ernesto Pichardo
Craig Pietig
Tammy J. Pike
Vincent Pille
Srinivasu S. Pinapati
Mindi L. Ping
Adam L. Piper
Samuel Pirruccello
Kalete M. Pitcher

Gregory Pochardt
Jeffrey A. Poggensee
Peter Pol
Trevor P. Poland
Chris Kenneth Polenz
Brian D. Poppe
J. Gregory Porter
James E. Porter
Patrick Porter
Matt E. Pospisil
Derrick C. Powell
Carrie J. Powers
Kim A. Preheim
Patrick Prince
Justin L. Ptacnik
Lawrence N. Quint
Donald C. Radtke
Robert A. Ramaekers
Sharleen A. Rapp
Dean F. Rasmussen
Robert C. Real
Mindy Reed
Timothy R. Reed
Conrad Reeson
Benjamin N. Reicks
Arden M. Reid
Bryan W. Reinecke
Sarah S. Reineke
John A. Reinhardt
Jonathan Renteria
Chad M. Reynolds
Rex A. Rezac
Adrieene L. Richard
Michael R. Richard
Avery H. Richardson
Nicole L. Riche
Lou D. Rickers
David R. Ridder
Mary A. Rieschl
Renan J. Rieur
Heidi Rigg
Suzanne M. Ritchie
Patrick Roark
Jeffrey K. Roberts
Dallas J. Roberts
Kelly Roberts
Donna M. Robinson
Angelica Robinson
Katie N. Robinson
Angela M. Rock
Lloyd Roduner
Kevin D. Rogert
Tiffany Rohlf
Nancy R. Rohwer
Faith K. Rolfson
Connie Roseberry
Marcus O. Ross
Michael C. Roth
Serena Rother
Jason P. Rothman
Stephanie Roy
Frank L. Rozmus

Neil M. Runyon
Patrick J. Rupp
G. Richard Russell
Chad Ruwe
David Saccoman
Michael Sackett
Constance Sagehorn
Brian R. Salak
Michael A. Salerno
Craig M. Sall
Brian D. Salmon
Pallavi Samant
Katie Sanders
Rebecca L. N. Sandiland
John C. Sanford
Lynn A. Sanne
Kevin M. Sass
Bonnie M. Savine
Gregory C. Scaglione
Kendall D. Scheer
Jim S. Schelble
Glen D. Schiltz
Patricia S. Schleiger
Daniel Schmidt
Christopher Schmidt
Scott C. Schneider
Bill J. Schomers
Ann M. Schow
Debra J. Schrapfer
Brandee J. Schultz
Philip M. Schultz
Jane Schumacher
Tracy L. Schwartzkopf
John L. Schwietz
Kimberly K. Scott
Brendy Jean Sealock
Juliann Sebastian
Jeffrey R. Sebree
Charles V. Sederstrom
Scott P. Seier
Brett K. Sesker
Ryan J. Sevcik
Melissa S. Shallberg
Jeffrey Sheldon
Bradley Shidler
Donald M. Shiu
Russel Shue
Adam J. Simeon
Mark Singer
Robert Singleton
Kyle Skiermont
Gary Skybo
Barry N. Sladek
William Sloane
Scot Sloboth
Carl V. Smith
Jacques Smith
Micheal Smith
Patricia K. Smith
Scott Smith
Michelle L. Smithberg
Mark Sneed

Leonard M. Sommer
Cari Sommer Charitable Fund
Amy Sorenson
Stacy Soto
Laura Marie Sparks
Matthew J. Speiker
Brian J. Spencer
Sandra A. Spicciati
Bekah S. Sporhase
Clint Sporhase
John S. Spratlen
Kip P. Squire
Sharon B. Stahr
Alan Stanek
Dorian L. Stanfield
William A. Startzer
Jason Steele
Julie A. Steele
Matthew Steele
Mike L. Stemm
Michelle Stenslokken
Brock Stewart
Tina Stewart
Adam R. St-Germain
Steven L. Still
Bradley K. Stock
Craig Stoffel
Steven Stotts
James A. Stotts
Raymond L. Stoupa
J S. Strauss
Nannette Sudman
Jeffrey Suhr
Debra Suing
Jack D. Sullivan
Timothy Sullivan
Janet J. Sutera
Ashley Sutera
Douglas P. Sutko
James F. Svoboda
Joe Svoboda
Kent R. Svoboda
Rachelle Takemura
James R. Talcott
Janice M. Taulborg
Joanna D. Taylor
Michael J. Taylor
Monte D. Ten Kley
Stephen TenEyck
Dolores E. Terwey
Tamara L. Teten
Timothy J. Thalcken
Gene E. Theel
Ray Thiele
Bryan William Thier
Lori J. Thiessen
Ann M. Thompson
Jan Michael Thompson
Chad Thompson
Jon S. Thompson
Kevin P. Thompson
Lori Thompson
Nancy Thompson
Wallace Thoreson
Greg L. Tiarks

Kathleen Tibke
Van N. Timberlake
Jayne L. Timmerman
Morgan Timperley
Elizabeth Tipton
Kurt F. Tjaden
Christopher Tomcak
Kala K. Tomjack
Gerald J. Tomka
Christopher J. Tonniges
Kevin J. Torczon
Andres Torres
Cody Townsley
Emily P. Tracy
Bryan Traylor
Joshua M. Tresemmer
Robert T. Troupe
Mark D. Trumble
Thomas F. Tryner
Kosei Tsukada
Shawn Tumey
Tammy M. Tusa
Gregory S. Twist
Linda M. Twomey
Karina Uhing
David P. Ulch
Jean Ullrich
Joseph A. Ulrich
Julia Ulrich
Bradley Underwood
Sheri R. Uno
Dalan Urquhart
Thomas J. Vaiskunas
Amy L. Van Horne
Stacy R. Vance
Joel W. VanderVeen
Jay A. Vankat
David W. VanSickle
Jonathan Vargas-Soto
Deepa Vasanth Kumar
Brady Venema
Joshua Vlietstra
Kyle G. Vohl
Glenn B. Von Seggern
Gary E. Voogd
Justin B. Vossen
Ken Vrana
Steve C. Wade
Jeffrey P. Wageman
John J. Wagner
Paul F. Wahlmeier
Katy Waldron Roshone
Michael J. Walenta
Megan Walker
Matthew T. Wallen
Scott Walters
George A. Wanek
Jeffrey J. Wanning
Blake D. Warneke
Tara Warren
Thomas H. Warren
Cheri J. Warren
Jessica Warren Teamer
Diana L. Watton
Rygan J. Watzke

David L. Waymire
David E. Weaver
Kari Webber
Jon M. Weber
James A. Weeks
James D. Wegner
Thomas J. Weinandt
James Weiss
Doug Wenger
Chad Werner
Nicholas Wertzberger
Wendy S. Whalen
Daniel Whisler
Douglas L. Whitfield
Julia Wieseman
Jeffrey C. Wiitanen
Roberta Wilhelm
W. Bruce Wilkie
Craig D. Wilkins
Lynn R. Williams
Tammy L. Williams
Andrew J. Wilson
Lucy M. Wilson
Ada Wilson
Bruce A. Wilson
Susan L. Witherell
Matthew Witt
Michael Wohlwend
Brandy Wojtkiewicz
Nancy Lindow Wolf
Gene Wolf
Ryan Wolfe
Vickie L. Wonder
Candice Wood
Angel E. Woodard
Barbara A. Woods
David P. Woods
Thomas C. Wortmann
Joseph Woster
Sue R. Wright
Henry S. Yarborough
Janis L. Yergan
Stephen L. York
James R. York
William W. Young
Sherry S. Young
Jacqueline Young McQuillan
Donghui Yuan
Barb Zabel
Mark D. Zagurski
Martha K. Zajicek
Jon A. Zellars
Weining Zhen
And 232 Anonymous Donors

Omaha World-Herald

Goodfellows

In Partnership with United Way of the Midlands

GOODFELLOWS

The Omaha World-Herald and United Way of the Midlands are pleased to share a partnership to administer the Goodfellows program. This partnership allows each organization to do what they do best — Omaha World-Herald will continue to share the rich stories and history of the charity, and UWM will raise program dollars and invest them back into the community. UWM manages Goodfellows donations separately and invests them according to Goodfellows' previous guidelines.

This list highlights those donors who supported the Goodfellows program for 2021-22.

Danish Brotherhood Lodge # 1
American Legion Post 331
G. E. Abariotes
AJS Farm Account
South High School Activities
Account
Connie Adams
K. Kevin Adams
John R. Addy
Douglas K. Aden
Donna Ahern
Kenneth L. Ahl
William Aken
Sheryl Aksamit
Edgar Aldrich
Ms. Gladys D. Aldrich
Helen Allen
Carol Allman
Jacqueline Altvater
Mary Ambrose
Dianne R. Amenta
James Amerine
Diane Ames
Ms. Diane M. Andersen
Richard G. Andersen
Mrs. Marian Andersen
Connie Anderson
Ms. Mary J. Anderson
Judith Anderson
Evert Anderson
Paul Anderson
Russell F. Anderson
Bonnie F. Anderson
Gary Anderson
Phyllis Anderson
Harry S. Anderson
Larry D. Anderson
Larry Anderson
Bruce Anderson
Polly Andres
Donald L. Andrews
Rodney D. Andrews
Ms. Sharon E. Appleby
Ms. Barbara K. Archer
David J. Arkfeld
Marilyn A. Arnold
Beverly A. Van Arsdal
Diana Asher
Bonnie Austin
Dennis D. Austin
Edward L. Babcock
Ms. Judy A. Bahensky-Vogel
Ron Bahn
Pauline Bahnke

Ms. Janice M. Bailey
Doug S. Baker
Barbara J. Bakhit
David Baldwin
Becky Balestri
Mark S. Balus
Diane Bang
Ms. Linda A. Bannister
Ruthann Bargmann
Dr. K.P. Barjenbruch
Darwin L. Barker
Ms. Jamie Barker
Mark Barnes
Stephen R. Bartelt
Robert Bartle
Robin Bartlett
Betty J. Bass
Mrs. Ann H. Batchelder
Edward S. Batchelder
Gary R. Batenhorst
Leland Bauer
Lucille Bauer
Donald D. S. Baxter
Ms. Katie A. Beacom
Janelle J. Bechtol
Jennifer Beck
Norma Beck
Robert M. Beecham
Ms. Susan Beeghly
Ms. Shirley A. Beier
Ms. Sally G. Bekins
Karen Belek
Dennis Benham
Ann Bennett
Joyce Bennett
Dr. Reba A. Benschoter
Kendall Bentley
Amy J. Beran
Dennis A. Bergstrom
Kathryn Bergstrom
Shirley Bernet
Laila Berre
Mr. Richard A. Berry
Jeffrey B. Berthiaume
Gerald Berthold
Ronald A. Bertucci
Keith P. Besch
Mrs. Mary E. Bestenlehner
Donald R. Betchell
Lisa Bethel
Dorothy M. Beutler
Mr. John Beyers
Mr. Philip Bierman
Ms. Brigitte Biers

John Binderup
Mr. Matthew R. Binderup
Mr. John Bischoff
Ms. Susan Bizzarri
Ms. Cindy R. Black
Russell Blankenfeld
John Blobaum
Terry Blue
Mr. Wayne A. Blum
Melodee Bock
Marjorie J. Bock
Doris Boettner
Patti Bogler
Dr. Daniel G. Bohi
Mr. Gary L. Bohn
Ms. Adrienne Bohnenkamp
Sharon Bojanski
David B. Boles
Ms. M. Therese Bollerup
Dana R. Bond
Marianne Bonnemier
Susan Bonnett
Mr. Gerald Bosanek
James Bottorff
Steve W. Bottorff
Gary Bowen
Ronald Bowen
Kathleen Joan Bradley
Janice Brady
Ms. Mary Braun
W. D. Bray
Dr. Roger D. Breed
Patricia Brennan
Mr. Patrick H. Brennan
Jackie Breyfogle
Ms. Donna E. Bright
Ms. Patricia I. Brinkman
Mr. Dennis L. Bristol
Richard Britten
Leslie Broadbent
Mr. Stephen Brocky
Janyce Broers
Barbara Brooks
Jeffrey J. Brown
Ms. Martha Bruckner
Norman Brunkow
Wayne Brunz
Holly Bryngelson
Mrs. Kimberly Buck
Clifford Buckingham
Jean E. Buehler
Donald J. Bukowski
Scott Bunz
Mr. Christopher J. Burbach

Elmer Burhenne
 Sheila Burke
 Judge Robert V. Burkhard
 Gary Burmester
 Joe Burns
 J. Richard Burrows
 James Bylund
 Michael Byrne
 Pat Camenzend
 Ms. Katherine M. Campagna
 Pamela S. Campbell
 Karen Campbell
 Don Campbell
 Ann M. Cannon
 Vincent A. Caraway
 Anna L. Carlson
 Ms. Patricia Carlson
 Jacqui Carnes
 Dan Carney
 Mrs. Shirley U. Carpenter
 Wils and Jennie Carr
 Mr. Richard E. Carroll
 Jane Carrothers
 Debra Carson
 Terry A. Carson
 Mary Carstens
 Johnnie M. Carter
 Pat H. Casey
 Mary G. Cave
 Lisa A. Caveye
 A. H. Cervatnes
 Mr. Alfred Chacon
 Mr. James M. Chambers
 Mr. Edward N. Champoux
 Gold Star Wives of America
 Inc.-Omaha Area Chapter
 Larry and Phyllis Tennison
 Charitable Fund
 Anonymous Raymond James
 Charitable Fund
 Glenn Charczuk
 Buzz and Becky Garlock
 Family Charitable Fund
 Edwin and Linda Kemp Family
 Charitable Fund
 Fidelity Charitable Fund
 Carl Riley Brodersen
 Charitable Trust
 Margie L. Chartrand
 Geraldine Chase
 James and Nancy Lykke

Charitable Checkbook
 Sam and Mary Watson
 Charitable Checkbook
 Don and Rita Otis Charitable
 Checkbook
 Mr. Jerald Chesnut
 Beth J. Chevalier
 Sandor Chomos
 Gretchen Christensen
 Raymond D. Christensen
 Kent A. Christenson
 Dennis Christianson
 Mr. Dennis P. Circo
 Ms. Deborah J. Ciurej
 Mr. Carl D. Clark
 Bradley W. Clark
 Karen N. Clark
 Stephen L. Clark
 Colleen Classen
 Ms. Julie Ann Classen
 Glen Clatanoff
 Dave Clayton
 Emily Cleary
 Joan Clements
 Ms. Jean M. Cline
 Deanna Cline
 Wilbur Clopton
 Bennington Women's Club
 West Omaha Service Club
 Maureen K. Coacher
 Dr. Barbara J. Coffey
 Mr. Earl E. Collins
 Linda Collins
 Marcia M. Colombo
 New Hope Missional
 Community
 Broadmoor Development
 Company
 Omaha World-Herald
 Company
 Janis Connealy
 Michael Conner
 Mr. Edmond G. Connolly
 Carolyn S. Contryman
 Doug Cook
 Mr. Warren H. Cooke
 Mr. Kenneth C. Coon
 W. Copple
 Mickey Coren
 Ronald J. Cork
 Ms. Anne C. Cornell

Carm Cosentino
 Richard Cosgrove
 Carol Coulter
 Nancy Covolo
 Jeffrey Cox
 Susan Cox
 Mr. Daniel Coyne
 R. L. Crabtree
 Bruce Cramer
 Randy Crawford
 Edward Crnic
 Vera Crnkovich
 Sheila Crosby
 Trudi Crosby
 Gertrude S. Crouch
 Mary Crouch
 Lana L. Cruz
 Dorothy R. Cull
 Craig Cullen
 Judy Cunningham
 Dolores D'Agosto
 Deanna Dahlkeotter
 Zaida Daisley
 Ms. Nandita M. Dalal
 Jeanne Dale
 Sharon Dall
 Donald A. Daubman
 Tom Daugherty
 David M. Daughton
 Janakbhai Dave
 Mr. Dale W. Davenport
 Ann Davey
 Phyllis Davis
 Joyce Davis
 Steven Davis
 William F. Davis
 Barbara E. Davis-Goings
 Carol M. Day
 Mr. Bruce Dean
 Ms. Diane M. DeBar
 Melvin S. Decker
 Theresa L. Dein
 Trudy DeKeuster
 Wendy Delong
 Ms. Catherine A. Demes-
 Maydew
 Bev Dempsey
 Patrick Dermondy
 Dianne Desjardins
 Jon Devries
 Gail Dickel

Darlene J. Dickinson
Joyce Diediker
Rebecca S. Dietle
Larry Dietrich
Roy Dinsdale
Karen Dix
Bill Dixon
Diana Dohse
Mr. William L. Donaldson
Donovan R. Donner
Charles Dorwart
Jacqueline Douglas
David Dow
Rosalie A. Downing
Gloria Drake
Mr. Robert E. Dreessen
Laure Drummy
Dale Duckert
Elizabeth A Dudzik
Jodyne Duffy
Ms. Kelly J. Duffy
Richard Dugan
Lorene Dulkoski
Francis G. Duncan
Sharon Dunham
Ms. Kathy J. Duvall
Mary Anne Dworak
Doris Dye
Robert Dyer
Immanuel Lutheran Church
Women of the E.L.C.A.
Michael G. Eason
Connie Eckley
Mr. Stan Edelstein
Patricia Edwards
Sooz L. Edwards
Nancy Edzards
Mary C. Egan
Jackie Eihausen
Richard Ekstrom
Mr. Rex Ekwall
Mr. Kirk H. Eledge
Ashland Park/Robbins
Elementary
Steve Ellefson
Dorothy Elsasser
Mr. John Else
Lynne K. Elwood
Kenneth W. Emken
Mr. Mark F. Enenbach
Mr. James D. Engle
Arnold L. Epstein
Diane Erdmann

Don Erftmier
Gerald Ergermier
Karla Ermel
Clarence Ernesti
Ms. Patricia M. Ervin
Grant Everett
Tory Ewing
Vernal Faller
Victoria Fanta
Sheri Farrar
Mr. Clifford A. Favor
Mr. Gerald G. Feagins
Charlotte Fehr
Martha Feit
Mr. Richard M. Fellman
Elizabeth A. Fellows
Donald Fey
James Ficek
Michael F. Finney
Terrence Finney
John Finocchiaro
Mr. Lawrence D. Fisher
MaryJane Fitch
Sherry Fitch
Ms. Jennifer L. Fitch-Clayton
David Fitzgibbon
Timothy Fitzpatrick
Mary J. Flamme
Linda Flott
Mary Lynn Focht
Linda Foley
Donn Forslund
Mr. Jim A. Fosmer
Zaysoff Family Foundation
Lynn and Nancy Bell
Foundation
McNamee Simmons
Foundation
Grant and Sharon Hrabovsky
Charitable Foundation
Greater Kansas City
Community Foundation
The Landen Foundation
The Noddle Family Charitable
Foundation
The Fred and Sally Bekins
Foundation
Gallagher Foundation
Rebensdorf Family Foundation
Robbins Family Charitable
Foundation
Slezak Family Charitable
Foundation

Dr. C.C. and Mabel Criss
Memorial Foundation
The Lozier Foundation
Ms. Marjorie A. Fouts
Ms. Janice E. Fowler
Kathy Fowler
Linda Fowler
Judith A. Fowler
Thomas Fowler
Laura Foxall
Jane Frahm
John Francavilla
Linda France
John Frederick
Marie French
Jane Frey
Jane Freyer
Ms. Deborah K. Friedman
Jeff Fries
Mike Fritton
Ronald Frykberg
Edward and Susan Furman
Charitable Fund
Keeler-Christen Charitable
Fund
Gene and Marilyn Spence
Charitable Fund
Elsie A. Bowling Memorial
Fund
Mary Anna and C. Anderson
Charitable Fund
Mr. and Mrs. John Ransom
Charitable Fund
Joyce Wilkins Fund
Ron and Jean Gordon Fund
Betty L. Beach PhD Fund
Norma C. Hinchcliff Charitable
Fund
Alan and Amy Siemek Family
Fund
Ronald and Grace Reagan
Fund
Kerry Dobson and Bruce
Reneaud Fund
Paul and Sue Ochsner Family
Fund
Woodman Family Charitable
Fund
Jack and Peg Hannam Fund
Dean and Maria Jacobsen
Donor Fund
Michael and Barbara Kelly
Charitable Fund

Cari Sommer Charitable Fund
Leonard and Esther Nowak
Charitable Fund
Cari Sommer Charitable Fund
Tom and Tamara Foley
Charitable Fund
Joel and Katie Guenther
Charitable Fund
Ms. Ingrid Furby
Ray Gallagher
Daniel Gallagher
Delores Galloway
Ms. Charlotte J. Gammell
David L. Gann
Marjorie M. Garabrandt
Eugenia A. Garackowski
Mr. Guiseppe Garafola
Joseph M. Garcia
Denise Garman
Warren E. Garnatz
Marilee E. Garrison
Richard Garrod
Paul Garvey
Tom Garvey
Jim Gaskill
Ms. Barbara S. Gatrost
Bill L. Gaus
Alvin P. Gavin
Susan Gehringer
Mr. Lawrence D. Gendler
Carol Gendler
Kristen Genier
Ms. Sharon K. Genners
Dale A. Van Gent
Sue Gentes
Alice M. George-Holmes
Jane Gerhard
Mr. Robert J. Gerken
Birte Gerlings
Kenneth E. German
State Farm Companies
Foundation Matching Gift
Daniel Gilg
Jeannie Gilinsky
Ms. Bonnie M Gill
Patrick Gillespie
Karen L. Gilliam
Stanley Gitt
Morton Glass
Elena Glatte
Ms. Diana J. Glynn

Mardelle Gocek
Carol J. Godbout
Robert Goding
Ms. Jeanne A. Going
Donald Goldstein
Michael R. Goodman
Mark Goodrich
Linda Gordman
Pattie Gorham
Ms. Cheryl Gorman
Richard Gottner
Robin L. Gottsch
Carol A. Gottsch
Susan E. Gottsch
James Gould
Patricia O. Grabow
Mr. James L. Grace
Kevin Grace
Patricia L. Graeve
Gerald Graeve
Nanette Graff
Gwendolyn K. Graves
Robert B. Mac Graw
Mr. Michael Tom Greco
Dr. Herman Greenwald
Bruce Gregory
Paul Greise
Dr. Jean Grem
Betty Grillo
Ms. Mary A Grimes
Mr. Robert Grimm
Ms. Donna Grimm
Dr. R. Michael Gross
Mary M. Grossman
Judith Gubbels
Rita Guenette
Bernard Guilfoyle
Mr. Daniel F. Guinan
Bonnie Guinn
Gary Gundy
Ms. Roberta L. Gunning
Joel Gurney
Robert C. Gutzman
Ms. Debra G. Haar
Barbara Haar-Rightmyer
Mr. David Haas
Ms. Cynthia Hadsell
Gary Hagebush
Mary Ann Hagen
Gerald Hahn
Marilyn Hale

Carolyn Hall
Steve Halstead
Mr. Deryl F. Hamann
Maxine Hamilton
Ms. Jody C. Hampton
Mr. John W. Hancock
Mr. Robert W. Haney
Mr. Gary Hannibal
Barbara Hanny
Grady Hansen
Bruce K. Hansen
Laura Hansen
Elaine N. Hanson
Stanley J. Harless
Mr. Richard L. Harlow
Colleen Harm
Donald H. Harm
Ms. Jacquelyn Harned
Ms. Karen L. Harned
Patricia Haro
Susan Harr
Ruth A. Harrington
Ms. Peggy E. Harris
Jean Hartwell
Ms. Linda M. Harwood
Charles Haskell
Maylene Haslett
James R. Hasting
Ms. Gladys E. Haunton
James P. Havelka
Ms. Mary J. Havlicek
Julie Hayden
Morgan Hecht
Joy L. Hegarty
Karen K. Heimuli
Mr. Timothy C. Held
Ms. Diane Heller
Kenneth Helmick
Patricia Hemphill
Anne Henderson
William H. Henderson
Gail E. Hennings
Bob Henrichs
Mary Herkenrath
Judy Hess
Jamie Hestermann
Donald Hickman
Ms. Lauren W. Hiebner
Bill Hill
Joan Hill
Ms. Deborah A. Hills

Norma C. Hinchcliff
Sandra Hinchman
Lois Hingorani
Susan Hinton
Ms. Norma A Hintz
Kathy Hobza
Jennifer B. Hodakowski
Marilyn Hoegemeyer
Richard F. Hoelscher
Noreen M. Hoeper
Marcelene Hoffman
Judith J. Hofmaier
Kathleen A. Hogan
Judith Hokamp
Thomas E. Holcombe
Lindsey Holley
William C. Holling
Kevin Holloway
Esther L. Holmes
Harlan L. Holmes
Ms. Ann R. Holmes
Philip Holmquist
Harold D. Holoun
Janet Holquist
Sheri Holsapple
Nancy R. Holtorff
Mr. Tony G Hooi
Dr. David E. Hoover
Allan Hoover
Jennifer Hopwood
Mr. Bruce J. Horacek
Ila D. Horn
Mr. Randall C. Horn
Richard Horner
Mary Horrum
Ms. Sonja M. Horton
Judy Hoscheid
Robert D. Hoskins
Carol Houchin
Dr. Julia F. Houfek
Marge Houlihan
Ms. Sandra K. Houser
Carol Hovendick
Laura Howard
Richard Howell
Mary S. Howell
Michael Hoyle
Beverly Hrdy
Joseph Hromadka
Nancy Huber
Mack C. Huckleby
Bertha Huckleby
Mr. Steven S. Huff

Stacy P. Hughes
Gregory J. Hulett
Cindy Humphreys
Rodney J. Hunke
Karen Hurd
Mary Hurlburt
Sandra Ihnen
D. C. Bradford III
Charles S. Pugsley III
Loren D. Ilg
Lynne Ilg
Midwest Design Imports Inc.
Omaha Retail Meat Dealers
Association Inc.
SRF Consulting Group, Inc.
Seed Enterprises Inc
Tritsch Electric Company Inc.
Swartzbaugh-Farber &
Associates, Inc.
Willie Inman
Adeline Innes
Carolyn L. Ireland
Robert Isenberg
Marian D. Iversen
Ramona Jacob
Richard Jacobson
Evelyn Janicek-Goodman
Mr. Gary V. Javitch
Sue E. Jeffers
Howard P Jeffers
Mr. Paul Jeffrey
Mr. Bob A. Jeffus
Sylvia Jenkins
Jim Jennings
Mr. Michael Jensen
Ms. Jacquin L. Jensen
Gloria Jensen
Owen Jensen
Richard Jepson
Linda Jess
Rosemary Jewell
Nancy Jewell
Kathy Joblinske
Abby Johnson
Geri Johnson
Janet Johnson
Jeane J. Johnson
Ronald Johnson
Ms. Diane M. Johnson
Nanette Johnson
Loren C. Johnson
Larry L. Johnson
Carl Johnson

Mrs. Loraine D. Johnson
Byron Jones
Bryan Jones
Gretchen Jorgensen
William Jorges
Debbi Josephson
William J. Herek Jr.
James L. Morgan Jr.
Mr. James A. Hale Jr.
Howard Roberts Jr.
Victor J. Samuel Jr.
Alfred Roth Jr.
Jack Langle Jr.
Donald C. Hosford Jr.
Paul Nickel Jr.
Mr. Jack H. Struyk Jr.
Mr. A. Williams Abts, Jr.
Mr. Verne A. Weber Jr.
Sandy Juilfs
Kathleen A. Kaczmarek
Mr. Mark Kadlec
Jerry Kain
Mr. Mark S. Kaipust
Patricia Kalil
Edie Kallemeyn
Robert Kamin
Linda Kamp
Marvin Karmann
Ivan Karpisek
Mr. Howard J. Kaslow
Mr. Patrick W. Kastl
Ms. Norma J. Kathman
Ms. Janet D. Katz
Mr. William D. Katz
Tim Kautzman
Mr. James K. Kawamoto
Carolyn Kay
Jerry A. Keane
Marilyn Keane
Mr. Jeff Keane
Ronald Keane
Mr. Robert D. Keasling
Dan Keefer
Ms. Annabelle Keene
Mr. Karl Kehm
Ken Keith
Ms. Karen A. Keller
Patrice Keller
Mr. Timothy D. Kelley
Mr. Douglas E. Kellner
Catherine L. Kelly
Ms. Sharon Kelly
Mary P. Kelly

Terry Kennedy
Wilhelminia Kennedy
Ms. Amy Kerby
Edward Ketcham
Mrs. Penny E. Kimball
Ms. Mary Jean King
James King
Marilyn Kinsley
Mary Kinstler
Richard Kirby
Larry Kirkebak
Justin Kirkland
Elizabeth Kiscaden
Jack Kiscoon
Ulis Kistaitis
Josh Kitchen
Patricia Kivett
Ramona Klaasmeyer
Janet E. Klein
Ms. Carmen R. Klein
Mr. Lyle Kline
Mary Klinger
Greg Kluck
Allen Knott
Joel H. Knudson
Larry D. Kobs
Brandon Koch
Mr. Harry D. Koch
Larry Kochen
Jeri Koenig
Janet Kohll
Patricia A. Kojdecki
Leon F. Komar
Mr. M. Gene Konopik
Ryan Korte
Karen Korte
Leon Korte
Kathryn Koslosky
Ms. Debra Kozeny
Virgene Kozlik
Marlene Kozlik
Rachel L. Kozol
Ed Kracl
Craig Kramer
David Krecek
June Kroeger
Victoria Kroeker
Tony Kroenke
Keith W. Krohn
Debra Krueger
Louise Krutsinger

Jack J. Kubat
Doris Kuhl
Mr. Wendell Kuhlman
Kurt Kuhlman
Shubhasish Kundu
Ms. Alice M. Kunes
Mr. Loren L. Lachnit
Jim Laguzza
Virginia Lakin
Tony Lamalfa
Janice Lambrecht
Glenda Lammel
Mr. Terry C. Lammert
Robert A. Lane
Thomas and Rose Langan
Carole Langan
C. Langdon
Donna Langel
Debbie Langle
Nancy Lanning
Ms. Linda A. Lape
John Lapour
Marilyn A. Larkowski
Rodney Larsen
Robert J. Larsen
Ms. Jean A. Larsen
David Larson
Barbara Lashinsky
Michael Laughlin
Pauline Laughlin
Gertrude C. Lazure
Judy LeDoux
Richard Leehy
Arthur Lehmann
James W. Lehnhoff
Gloria Leiferman
Robert Lembke
Connie Lemke
Mr. James L. Lemon
Helen Lenagh
Roland Lentz
Edward Lenz
Ms. Donna Lessig
Stanford Lessmann
Sandra Levermann
Charlotte M. Lewis
Brock Lewis
Mrs. Anne C. Lieben
Thomas C. Liehti
Mr. Steven Liewer
Ms. Sherryl L. Lilley

Judy Lindquist
Dolores R. Lindsay
Ms. Connie J. Linhart
Chris Link
Craig Linnenbrink
Ms. Julie Lintzman
Shirley A. Lippy
Big Dogs Properties LLC
Mary Lofgren
Madonna Loland
P. Lontor
Ms. Grace Harada Lord
Jeaninne Lovgren
Stephen Lubman
Claudia Lucas
Gerald Luckey
Mary Lueders
Ms. Donna F. Luedke
William Luehr
Larry Lumpkin
Ms. Jan L. Lund
Sandra F. Lundholm
Wayne Luther
Mr. Lowell D. Lutt
Amy S. Lyons
Mr. Gordon S. Moshman M.D.
Mr. John N. Walburn, M.D.
Brian Maas
Julie M. Mabeus
Armel MacDonald
Alan Mach
Glen Mackie
Mr. John S. Maczynski
Bud Majest
Jody Malashock
Joe Malloy
Keith Malo
Thomas Malone
Todd Malouf
Jennifer Mancuso
Edward D. Manning
Mike Mansour
Marcine De Maranville
Joyce Marasco
Colleen Marceau
Rick March
Jane Mardi
Ms. Susan C. Marino
Joyce Marple
Dean Marshall
Karen Martin

Mr. Jay Martufi
Dale Marx
Brian Masteller
Carol J. Matschullat
Mr. Hans Matthiessen
Robert Maxwell
Cassandra Mayhan
Mr. Melvin H. Mays
Barbara J. Maytes
Mr. Greg McAllister
Kevin McArdle
Sidney McCahill
David McCann
Mr. Michael R. McCarthy
Joseph McCaslin
Mrs. Rita J. McCaw
Ms. Pamela McCawley
Col. Ellis McClintick
Marjorie J. McCord
Mr. Kevin P. McCoy
Mike and Karen McCreery
Ms. Diana McDanal
Sharon McDonald
James L. McDowell
Roberta J. McEvoy
Mary McGinn
Anna McGrain
Maureen E. McGrath
Ms. Mary L. McGrath
Ms. Kristy L. Mcguire
Ms. Susan R. McHale
Donna L. McKenna
Robert G. McLean
Paul McManis
Patrick McManus
Ms. Laurie J. McMullan
John R. McPhail
James M. McQuillan
Dr. Samuel M. Bierner MD
James C. Wendt MD
Ronald Wax MD
Jack Mefford
Don Mefford
John D. Meier
Mr. David A. Meier
Janet Meisinger
Julie Meisinger
Daniel J. Melkus
David Melotz
Darlene Menard
Sally Messbarger
Richard D. Meuret
Elaine M. Meyer

Roger Meyer
Ms. Gail Micek
George Mickells
Mr. Ronan J. Mickels
Mr. Dennis N. Mihelich
Audrey Miller
Charles C. Miller
Fred Miller
Marcia Miller
Donald M. Miller
Mr. Steven P. Miller
Joan P. Miller
Michael Miller
Jim Milroy
Judith Minor
Lynda J. Mirvish
Larry Moeller
Marie Mogis
Randall D Mohr
Ms. Jean M. Moline
Brian Moneke
Barry Moody
Ms. Rose A. Mora
Lisa Moravec
Ms. Val J. Moritko
James Morley
Ms. Jo Morton
Robert L. Moser
Harold Mueller
Linda M. Mueller
Ms. Lori K. Mueller
Betty Munch
Virginia L. Munch
Mr. Donald L. Munchrath
Mary J. Munshaw
Bertha Munson
Ken Munzesheimer
Mr. Allan M. Murow
Rozanne M. Murphy
Mitzi Murphy
James M. Murphy
Mr. Daniel M. Murphy
Patrick Murphy
Mr. Dennis F. Murphy
Mr. John E. Musselman
Ms. Elaine H. Myers
Joe Nabity
Ms. Diana R. Nakamura
Ms. Kelly I. Nalty
Ms. Linda M Napravnik
Mr. Eldon R. Naven
Ms. Kara L. Negley
Judy Nekonchuk

Arnold Nelson
Betty Nelson
Ken Nelson
Linda Nelson
Cheryl Nelson
Carl R. Nethers
Dr. Eric John Neuman
Mark A. Newhouse
Sharon L. Newman
Mr. E. Robert Newman
Vernon J. Newte
Helen Nichols
Ms. Margaret Niebling
Peg Niedbalski
Ms. Sandra R. Nimmo
Mr. Henry C. Nipper
Steven Norden
Cathy Nordues
Carol Novak
William Novak
Mr. Larry B. Novicki
Ms. Carolyn Nussrallah
Susan Nutty
Stephen Nye
Donna R. Oberdin
Ms. Maureen A. Ockerman
Patricia O'Connor
Mr. James R. O'Dell
Janice Ohlinger
James O'Keefe
Dean Olander
Suzanne Olson
Mr. Steven J. Olson
David Olson
Sertoma Club of Omaha
Horseless Carriage Club
Omaha
Johann Onnen
Kay Ontiveros
Paul Opocensky
Authur Orchard
Trudy Ortlieb
Mrs. Don Osborne
Robert H. Ostdiek
Allen Ostravich
Betty W. Overly
Carmen Ovici
Mr. Robert E. Owen
Stanley Owens
William Owens
Masimore, Magnuson &
Associates, P.C.
Mrs. Suzanne Palmer

Cynthia R. Palmer
Ms. Dorothy Panowicz
Sherry Parcel
Johnnie Parker
Victoria L. Parker
Katie Parks
Jacqueline Parmenter
Nancy Partridge
Mr. Frank Partsch
Jeremy J. Pascale
Inez M. Patrie
Sheree Patterson
Jean Patton
Shelley Pauba
Mike Pauls
Catherine Pawol
Cynthia Pearrow
Allan D. Pearson
Ledene Pearson
Jerry Peck
Linda Pedersen
Gerard Peers
Ms. Peggy L. Pelish
Jackie Pella
Sylvia Pelzer
Susan Penner
Doug Pera
Josephine Peralis
Susan Perez-Tinnin
Susan Perina
Ray A. Pesek
Ms. Barbara J. Peters
Mary Peters
Constance C. Petersen
Richard Petersen
Charlene R. Petersen
Dennis R. Petersen
Mr. Gary R. Petersen
Randall Petersen
Lisa Petersen
Ms. Shirley Petersen
Ms. Susan Petersen
Wade Petersen
Constance F. Peterson
Dr. Victoria F. Roche Ph.D.
Susan Phillips
Jane Phillips
Cindy Phipps
Sara B. Pickens
Ronald L. Pigg
Donald Pinneo

Samuel Pirruccello
Michael Pirtle
Ms. Ellen M. Piskac
Steve Pitlor
Lynne Plambeck
B J. Podtburg
Todd Polum
Wilma Ponte
Ms. Jill Poole
Ms. Kathleen A. Popelka
Sharron G. Potadle
Mr. David E Potter
Martha Povondra
Rita Powell
Matthew M. Powills
Vicki Pratt
Joan Preble
Richard L. Preister
Daniel Preister
Ms. Judith A. Price
Jason Price
Robert E. Price
Ms. Karin T. Priefert
Orin Priest
Patrick Prince
Thomas Prohaska
Mr. Duane S. Prorok
David Prosocki
Illa Prusha
Marcia J. Pryor
Xi Beta Psi
Mr. Chuck Pugel
Gene R. Pugh
Richard Quinlevan
Ms. Gaylene Quinn
Kathryn Raasch
Laura M. Rahlfs
Vicki Rakowsky
Angela K. Ramm
Carolyn Raulston
Mr. Ronald W. Reagan
Conrad Reeson
Ginger Rehmann
Mr. Bruce D. Reid
Margaret F. Remar
Ms. Barbara J. Rennert
Bellevue Education Association
Retired
Becky Reumund
James M. Revoy
Janis Reynolds

Arlene Reynolds
Peggy Rhoades
Bonita Rhoten
Paul Rice
Nita Richards
Rod Richardson
Bob Richey
Marvin J. Richter
Mary Ridge
Olivia Riehle
Renan J. Rieur
Robert Riggs
Joy C. Roark
Ms. Laraine K. Roberts
Frances H. Robertson
Mr. Stephen D. Robinson
James Robinson
Edward and Lida Robinson
Patricia Roelle
Silvia Roffman
Ms. Eleanor G. Rogan
Linda Rogers
Suzanne Rogert
Thomas E. Rohrbough
Mrs. Nancy R. Rohwer
Ms. Sue A. Rollins
Boone Bros. Roofing
Mr. Ron Rosberg
Terese Rose
Rich Rothe
Joan Rousseau
Mark O. Rousseau
Marilyn A. Routt
Jeffrey L. Royer
Paul Rubin
Ken Ruch
Catherine Rudin
Joyce Ruffino
Daniel Ruhe
Gary Runyan
Shari Ruskamp
Mr. John P. Russell
Michael Sackett
Constance Sagehorn
Richard Salazar
Rob Salerno
Ms. Carol A. Sanderhoff
Ms. Malory Sanders
Ms. Susan J Sanders
R. J. Sandquist
Colleen J. Sariscsany

Kathie Sautter
Ms. JoAnne M. Savicky
Patsy Sawyer
David Schack
Paul Schaefer
Ms. Susanne C. Scheinost
Karan Schicker
Willene Schiffbauer
Thomas W. Schleisman
Janice Schlichting
Loretta C. Schmidt
Sharon Schmidt
James Schmidt
Petra Schmidt
Mr. Harold R. Schoenbohm
Doris M. Schomer
Mr. Jeffery W. Schovanec
Ms. Carol A. Schram
Kenneth Schram
Julie M. Schroeder
Jane Schumacher
Ms. Alice M. Schumaker
Mr. Douglas Schumann
Dr. Pamela G. Schwalb
Mr. Leonard W. Schwalm
Donald Schwalm
Nancy Schwartz
Nan C. Schwers
Richard Scott
Mr. Joseph E. Seda
Donald Von Seggern
Marilyn H. Seidel
Thomas Seidel
Mark Semerad
Ann Settles
Marie Shaffer
Doug Shanahan
June A. Shanahan
Jeanie Shank
Lori Shannon
Paul Sharrar
James P. Sheldon
Billie Shelton
Allen L. Shepherd
James Sheridan
Melissa M. Sherlock
Mrs. Patty S. Sherman
Bill Shimek
Joyce Shipwright
Jack Shockley
Louann Shoemaker
Charlie W. Shogren
Ms. Arlene J. Shreve

Mr. Martin H. Shukert
Robert Shults
James A. Sibbersen
Margaret L. Sibbersen
Mr. Leon L. Siedlyk
Harriet Silber
Kris Sime
Steven K. Simonsen
Duane Simpson
Mark Singer
Robert Singleton
Thomas R.W. Skinner
Delores Skog
Gary Slowik
Gary D. Smith
Mae Smith
Jane Smith
Martin Smith
Arlene E. Smith
Craig Smith
Eileen Smith
Craig Smith
Charles D. Smith
Patricia K. Smith
Marlene Snell
Carol J. Snitily
Ms. Diane Snyder
Ms. Jutta M. Sofronovs
Mr. James Sojka
Mr. Gregory S. Solko
Dolores M. Somer
Anna Sorensen
Jolene Sorensen
Norman Sorrells
Mr. William R. Soukup
Patti Spack
Ms. Judith M Spaen
Paulette Spath
Jean Ann Spires
Verl Squire
Harold W. Hodges Sr.
Ms. Karen R. Stacey
Betty Stading
Ms. Beth S. Staenberg
Duane Staiert
W.J. Stamp
Donna Standley
Alan Stanek
Mr. William A. Startzer
Raymond Stavneak
Richard Steffensmeier
Kenneth C. Stephan
Claudette M. Stephenson

Jeff Stern
Tina Stewart
Mr. Michael A. Stiehl
Annette Stier
Laurie B. Stiles
Howard Stimson
Robert J. Stock
Ms. Stephanie Stockard-Spelic
Ms. Kathy Stockham
Kimberly J. Stoler
Richard Stoll
Mary Stolzer
Bonnie L. Stott
Anna L. Strain
Mary Ann Strasheim
J. S. Strauss
Mary Stuart
Raymond Stuart
Nancy L. Stuckey
Charlotte Stuhr
Debra L. Sturges
Steve Styers
Roger Suess
Debra Suing
Erin Sullivan
Mr. William L. Sullivan
Rose Sullivan
Bryce Sunderman
Ms. Nancy A. Sus-Langenfeld
Linda Sutton
Ms. Diana Glenn Svehla
Ms. Nancy A. Svoboda
Norma Jean Swanger
Janice Swanson
Larry Swartzbaugh
Patricia Swartzbaugh
Mary Sweeney
Mr. Daniel R. Sweetwood
Lorie Swenson
Mrs. Ramona A. Swett
Janet Swoboda
Robert Synowicki
Lincoln Electric System
Carol Szatko
Ronald Tande
Jamie J. Tarkowski
Ms. Carol Tascione
Janice M. Taulborg
Peg Taylor
Ms. Julia E. Taylor
Connie Taylor
Mr. John R. Taylor
Marilyn Teal

Sandee TenHaken
Rudy Tesar
Mr. John J. Tesarek
Dean Teten
Dr. Barbara Teter
Marilyn Theis
Joyce A. Thelen
Ray Thiele
Norman E. Thomas
Lauren R. Thomas
Mr. Dennis Thome
Carole Thompson
Mr. Chester Q. Thompson
Rosanna Thurman
Jacque Tibbels
Karen S Tichy
Ok K. Tierney
Ms. Vanessa D. Timberlake
Van N. Timberlake
Judith Timm
Roland Timmerman
Jayne L. Timmerman
Martin Timmerwilke
Jerriann Tinsley
Mr. Darryle D. Todd
Tom Tokos
Mark Tolan
Patricia Tompsett
Joanne L. Topolski
Thomas Torczon
Dr. Stephen D. Torpy
Susan Tracy
Kathy Tripp
Diane G. Truax
David and Martha Slosburg
Family Trust
Robert A. Risk and Karen G.
Risk Trust
Mr. Thomas F. Tryner
Donald Tucker
Connie Turek
Donna Turner
Judith E. Turner
Denene I. Turner
Mr. Ricardo R. Turner
Ms. Jean Ullrich
Kevin Ulmer
Linda Urbanksi
Michael Valasek
Deanna M. Vandriest
Ms. Mary E. Vankat

Willa Vargas
Carol Vargas
Dustin Vaughan
Nancy Veasey
Carolyn Vencil
Brady Venema
Leonard Vermaas
Rockbrook Camera & Video
James J. Vihstadt
Ms. Alice R. Villone
Sandra Viner
Ms. Rose Vodvarka
Jean Volsicka
Ken Vrana
Mr. Matthew Wafer
Terry Wagner
Ron Wagner
Cynthia Walden
Tom Walker
Ms. Ann K. Waller
Denise J. Waller
Norman Wallman
Mary Jo Walsh
Mr. George A. Wanek
Mr. Louie Warren
David Warrick
Ms. Teresa H. Wasikowski
Chester Waters
Malcolm H. Watt
Sara M. Waugh
Mr. Brett J. Wawers
Richard M. Webb
Mr. Allen T. Weber
Lawrence Wedige
Mrs. Pam Weekly
Stan Wegner
James Wehbey
Mr. Gregory A. Weideman
Ms. Jacqueline A. Weir
Debra Weiss
Mr. James Weiss
Marti A. Welch
Gene R. Welch
Mr. Gary G. Welch
Elaine De Well
Mr. Gordon A. Wellensiek
Carolyn J. Wells
Angie Wells
Ms. Linda K. Wells
Betty Welte
Doug Wenger

Constance Wesely
Marilyn Westenhover
Ms. Dixie Westerlin
Mr. David W. White
Dean White
Ms. Connie Wichman
Barbara Widman
Jean Wiechmann
Larry Wiederspan
Barbara Willett
Stuart D. Williams
Mr. Warren R. Williams
Ms. Lynn R. Williams
Nancy Williby
Steven Willoughby
Joel Wilson
Sharon Wilson
Carol E. Wilson
Mary Wilson
Anna Winans
George Winn
Ms. Susan L. Witherell
Francia Witt
Ms. Barb Witte
Mrs. Nancy Lindow Wolf
David Wolff
Judith Wollenburg
William Wollenhaupt
Ronald Wondercheck
Sherry L. Woodard-Rush
Larry Woods
Ms. Jacqueline S. Wrieth
James Wright
Ms. Mary E. Wright
Mr. Thomas R. Wright
Debbie Young
Sandy Young
Jeannette Young
Ms. Lucretia L. Younie
Robert Zaback
Barb Zabel
Raymond Zaraya
Mr. Gregory T. Zebolsky
Weining Zhen
Mr. Albert L. Zimmerman
Michael Ziskey
and 36 Anonymous Donors

CELEBRATING 100 YEARS OF GIVING BACK AND LOOKING FORWARD

Looking back at our rich history and how we plan to move forward for the next 100 years.



A CENTURY OF HELPING OTHERS

1923

Local citizens and community leaders banded together to create United Way of the Midlands' prototype, The Community Chest. We were, and still are, dedicated to responding to the community's needs, by investing dollars in local health and human service programs that make the most impact. In our first year, funds were allocated among 30 participating nonprofit agencies in Douglas County.



1933-34

With the introduction of federal relief programs, the Community Chest changed its focus to those unable to receive government aid. The organization's 1934 annual campaign lasted 10 days with a goal to raise \$554,800.



1941

Built upon a mutual desire to create a better, stronger and more vibrant community - a partnership is established with the Omaha Federation of Labor, AFL-CIO to work together and strengthen the metro area for generations to come.

1950

Omaha was one of the few communities to pioneer a national model for a single organization dedicated to all facets of nonprofit fundraising and program investment...and the organization started calling ourselves United Community Services. Also, the Red Feather became a symbol of the annual campaign.



1966

"Volunteerism" was added to the organization's mission, increasing opportunities for the community to participate in supporting our cause.

1972

The "Citizens of the Year" award was established to recognize individuals for their commitment and dedication to our community.

1975

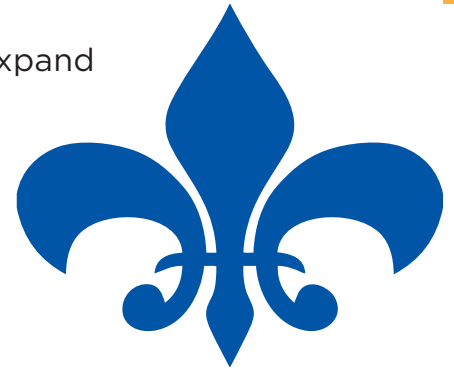
We officially became "United Way of the Midlands."



1987

UWM combined forces with United Way of Council Bluffs to expand fundraising efforts in the greater metro area.

The Tocqueville Society was established. The charter group included 12 members whose vision and belief in the community spurred others to join and give. Since its inception, the Society has notably raised over \$117 million for the Omaha-Council Bluffs community.



1998

The Court-Referred Community Service Program (CRCSP) was created. This program, with support from Douglas County, refers criminal offenders to agencies for completion of judge-ordered community service. The CRCSP assists an average of 300 clients annually.

2002-10

UWM's 211 Helpline expanded from four counties in 2002 to covering the entire state by 2010. The 211 Helpline is a free service that provides information and referrals to people who may not know how to find or access local programs to address their needs. It also provides multiple points of access for those looking to receive assistance easily and confidentially via phone, text, email or online chat.



Get Connected. Get Help.™

2012

Led by Ken Stinson, a committee of local leaders explored the area's needs and UWM's role in the community. This led to a transformational strategic plan that called for expanded fundraising and the establishment of an open grant process - allowing more local nonprofits to apply for funding and partner with UWM to meet defined goals and community needs.

2015

The Corporate Partners of the Year awards are established to recognize organizations that go above and beyond to support UWM and our community and meet families' essential needs such as healthy food, safe and stable housing, physical and mental health services, career preparation and job training.

2019

JAG Nebraska is established in collaboration with Governor Pete Ricketts and the Nebraska Dept. of Labor. An evidenced-based, for-credit classroom elective, JAG helps students develop their skillsets to overcome the many challenges they face - all while setting them up for success in the classroom, workplace and life.



2020

UWM partnered with the Omaha World-Herald to administer the Goodfellows program. Also in 2020, we expanded our partnership with MUD and OPPD through the 211 Helpline for utilities assistance and secured CARES funding for housing stability - allowing us to provide support for a variety of housing-related needs.

2022

Through a partnership with Mayor Jean Stothert and the City of Omaha, UWM was selected to distribute \$5 million in American Rescue Plan Act (ARPA) funds to agencies in the metro area.

Today, UWM continues to serve the Omaha-Council Bluffs metro by bridging the business and not-for-profit sectors to create a Circle of Support that helps our neighbors overcome difficult challenges and start building a better future. For fiscal year 2021-22, UWM raised \$36 million to support programs and direct services that address social and economic disparities



FOREVER UNITED FUND

YOUR LEGACY, OUR COMMUNITY'S FUTURE

To celebrate our 100-year history of making a difference in the Omaha-Council Bluffs community and ensure we can continue supporting our neighbors in need for the next 100 years – we've created the *Forever United Fund*.

An endowment program designed to deliver a perpetual source of funding to help United Way of the Midlands (UWM) give back to our community for many years to come – the *Forever United Fund* is a meaningful way to support organizations you believe in and help make sure their work will continue in the future.

PARTNER WITH US TO BUILD YOUR LEGACY

Through the *Forever United Fund*, there are several ways you can make a gift and build your legacy of community change and support. For Ron Lewer, his legacy is a dedication to work, family, frugality and giving back to charities close to his heart.

Born and raised in Council Bluffs and an employee of Union Pacific for more than 30 years, Lewer was a member of UWM's Tocqueville Society – for which he paid his life insurance premium each year as his gift. Upon his passing in November 2021, his generous legacy gift will now generate \$36,000 every year to assist UWM in helping those who need it most. Ron was “without a doubt, the most frugal individual I ever met...and at the same time, the most generous,” said his older brother, Larry. “He never made a lot of money, but he saved everything and prioritized giving back to the community.”



If you're interested in preserving your legacy and supporting our community's future, or you'd like additional information about the *Forever United Fund*, please contact:

Laura Tatten – Senior Vice President, Donor Engagement
ltatten@uwmidlands.org
402-522-7962

United Way of the Midlands Board of Directors

MEET OUR 2022-23 BOARD OF DIRECTORS

Our Board of Directors has ensured United Way of the Midlands grows in the right direction, offering their thoughtful leadership and guidance every step of the way. And we are so thankful to have Cory Shaw, executive vice president and chief operating officer at Nebraska Medicine, now chairing the board.



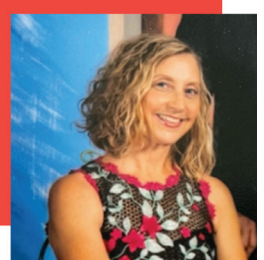
*Cory Shaw, Board Chair
Executive Vice President, Chief
Operating Officer
Nebraska Medicine*



*Shawna Forsberg
President and Chief Executive
Officer
United Way of the Midlands*



*Avi Atholi
Vice President, Enterprise Data
Management
First National Bank of Omaha*



*Pamela Beall-Hill
Women United Liaison
Incoming President
Women United Steering Committee*



*Chanda Chacon
President & CEO
Children's Hospital & Medical Center*



*Susan Courtney
Executive Vice President, Operations
& Clinical Effectiveness
Blue Cross Blue Shield of Nebraska*



*Gail DeBoer
Retired President and Chief
Executive Officer
Cobalt Credit Union*



*Matthew DeBoer
Vice President, Great Plains
Architecture Principal
HDR*



*Bob Gunia
Senior Vice President, Public Affairs
Group
Physicians Mutual*



*Jamie Gutierrez
CEO and Owner
Midwest Maintenance Companies, Inc.*



*Gladys Harrison
President
Big Mama's Kitchen & Catering*



*Jessica Heidebrecht, Emerging Leaders
Board Liaison
Supervisor, Corporate Communications
Metropolitan Utilities District*



*Carol Henrichs
Vice President of Patient Care
Services
CHI Health*



*Steve Kaniewski
President and Chief Executive Officer
Valmont Industries*



*Derek Leathers
Chairman, President and Chief
Executive Officer
Werner Enterprises*



*Chris Leitner
President, Strategic Development
and Acquisitions
Tenaska*



*Dr. Cheryl Logan
Superintendent
Omaha Public Schools*



*Paul Maass
Chief Executive Officer
Scoular*



*Clark Ponthier
Senior Vice President, Supply Chain
and Continuous Improvement
Union Pacific Railroad*



*Jim Richardson
Partner and Nebraska Audit Leader
RSM US LLP*



*Joseph Sullivan III
Regional President of Nebraska and
Southwestern Iowa
U.S. Bank*



*Eric Tiritilli
Partner
Lamson Dugan & Murray LLP*



*Dina Tilgner
Chief Operating Officer
NP Dodge Company*



*Randy Wood
President and Chief Executive Officer
Lindsay Corporation*



*Brian Woolfolk
Head of Institutional Division
Pacific Life*



United Way of the Midlands
UNITES our community's
CARING SPIRIT to build a
STRONGER tomorrow.