

A Better Future Begins with You



**COMMUNITY
STRONG**
unitedwaymidlands.org



Annual Report | July 2015 - June 2016

A Better Future Begins with You

Thanks to donors, volunteers and community partners, United Way of the Midlands is not only focused on addressing our community's human needs today; it is focused on what can be, and what should be. It is building on today's strong partnerships to create even more comprehensive human service efforts tomorrow, so our community can solve some of the root causes of poverty. United Way is community-based and community-focused. Thanks to those who share their strength, United Way is **COMMUNITY STRONG**. We invite you to visit www.UnitedWayMidlands.org for more information.



Boys & Girls Club of the Midlands



MISSION

To impact poverty, we focus the efforts of many to help our neighbors stand strong – by addressing basic needs, and fostering success in the classroom and the workplace.



*Heartland Family Service
Intergenerational Center*



Latino Center of the Midlands

Table of Contents

Board Chairs and CEO Letter	2
Our Community's Challenges	4
UWM Community Impact	6
Stories of Change	8
2025 Goals	12
Recognizing Excellence	14
UWM Leadership	16
Financials	18
UWM Investments	19
Tocqueville Society	20
UWM Foundation	24
Bridgebuilders Society	26

Working Together, Measuring Progress

The Omaha-Council Bluffs metropolitan area is known for its can-do spirit and its commitment to making each tomorrow better than the last. We are grateful to the numerous donors, businesses, government and civic organizations and non-profit partners that collaborated with and supported United Way of the Midlands over the past year. A great deal was accomplished and the foundation was set for further impact and engagement going forward.

- The year began with a move into the Federal Reserve Bank, providing a welcoming environment for collaboration and convening with community partners while occupying a smaller footprint, ample parking, better use of office resources, and no building maintenance costs.
- Refinements to the Community Investment Review Team process include the introduction of a two-year investment cycle that provides the programs a longer runway for funding and program impact. United Way's Community Care Fund currently supports 127 critical programs at 57 agencies in our community. The impact of last year's investments can be found on page 19.
- We launched a new symposium series partnering with the University of Nebraska Omaha, University of Nebraska Medical Center, Buffett Early Childhood Institute, and Nebraska Children and Families Foundation. First-year topics included trauma-informed care and the widening gaps in opportunity that poverty creates. The May poverty symposium included a keynote address by Robert Putnam, Harvard professor of political science, who also joined a panel discussion with seven esteemed members of our community's education, nonprofit and public sectors. The event drew an audience of 500 guests.
- Partnerships remained a critical element of UWM's local efforts to impact poverty and address people's needs. This important work includes Community Health Charities of Nebraska, the Heart of the Midlands Combined Federal Campaign, United Way's partnership with the Omaha Federation of Labor and the Omaha Community Foundation's Landscape Project.
- Based on the extraordinary success of the Women's Leadership Council, a Young Professionals group was created, with a membership of nearly 600 members. Its leadership is a dynamic group of people who have created meaningful opportunities to get involved and give back to the community.

- Expanded volunteerism was developed with the improved Day of Action and additional customized volunteer opportunities, which involved a nearly 1,900 individual donors who engaged with our work and our community partners.
- Approximately 230,000 services were delivered to address critical needs and begin to solve the challenges of those living in poverty.
- UWM's 2025 Goals were developed – a set of specific and measurable long-term goals that will guide the work, and keep our organization accountable for the positive results from UWM investments and our collaborative work with other local partners.

These are but a few examples of the focused and intentional work that was set forth by the new strategic direction of United Way. While much has been accomplished in that regard, we know there is much yet to be done.

Above all, we want to thank you for your engagement with United Way of the Midlands. With your investment and partnership, our community is better prepared to address poverty and help our neighbors grow stronger. Truly a better and brighter future begins with you.

Sincerely,



Dr. Mary Hawkins
Bellevue University President
2016-17 UWM Board Chair



Lance Fritz
Union Pacific Railroad Chairman,
President and CEO
2014-16 UWM Board Chair



Shawna Forsberg
President and CEO
United Way of the Midlands



Our Community's Challenges

All human beings face adversity at one time or another. But for some, it is a daily challenge.

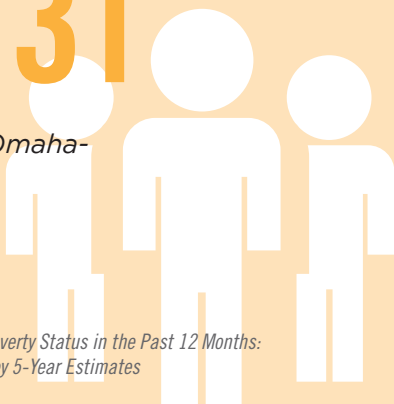
Consider the hardship faced by more than 106,000 individuals who live in poverty – right here in the Omaha-Council Bluffs area.

United Way's strong community response begins with comprehensive local data that measures the scope of the problem, in human terms.

106,731

Number of people in Omaha-Council Bluffs living at or below poverty level

American Community Survey: S1701 Poverty Status in the Past 12 Months: 2010-2014 American Community Survey 5-Year Estimates



38,590

Number of children in Omaha-Council Bluffs metro area living at or below poverty level (Under Age 18)

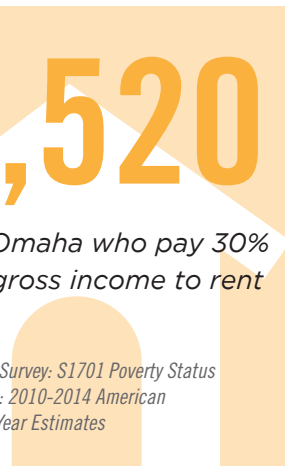
American Community Survey: S1701 Poverty Status in the Past 12 Months: 2010-2014 American Community Survey 5-Year Estimates



50,520

Number in Omaha who pay 30% or more of gross income to rent

American Community Survey: S1701 Poverty Status in the Past 12 Months: 2010-2014 American Community Survey 5-Year Estimates



300,407

Number of Omaha-Council Bluffs metro area residents have had difficulty or delay in obtaining health care services in the past year

Executive Report 2015 Community Health Needs Assessment. Douglas, Sarpy, & Cass Counties, Nebraska and Pottawattamie County, Iowa. Professional Research Consultants, Inc.



36,583

Number in metro area employed full or part time living in poverty

American Community Survey: S1701 Poverty Status in the Past 12 Months: 2010-2014 American Community Survey 5-Year Estimates

35,023

Number in metro area unemployed living in poverty

12,984

Number of adults age 25+ that did not graduate high school living in poverty

15,565

Number of adults age 25+ with a high school diploma only, living in poverty

16,169

Number of adults age 25+ with some college/associates degree living in poverty

American Community Survey: S1701 Poverty Status in the Past 12 Months: 2010-2014 American Community Survey 5-Year Estimates

1 in 7

Ratio of individuals in the metro area who experience food insecurity

Number of people who do not have regular access to food, by county:

75,450 Douglas

17,950 Sarpy

11,400 Pottawattamie

"Food Insecurity" Gretchen Swanson Center for Food Nutrition, 2015 (web)



10,425

Number of "Opportunity Youth" in the metro area (OY: 16 to 24 year olds who are neither in school nor have a job)

Belfield, C., Levin, H. & Rosen, R. (2012) The Economic Value of Opportunity Youth in association with Civic Enterprises for the W.K. Kellogg Foundation



Community Impact

One program, one person at a time, the funds generously donated by individuals and organizations are making a difference in people's lives and our community's strength.

230,000

Approximate number of services delivered to address critical needs and begin to solve the challenges of those living in poverty

11,346

Individuals who received education to stabilize their housing situation and their finances

1,133

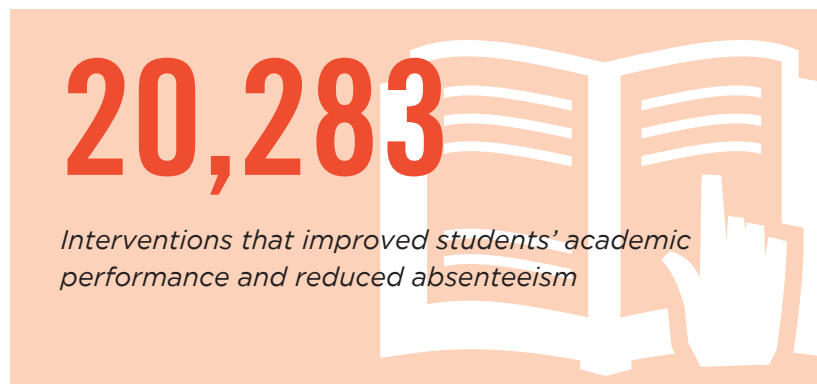
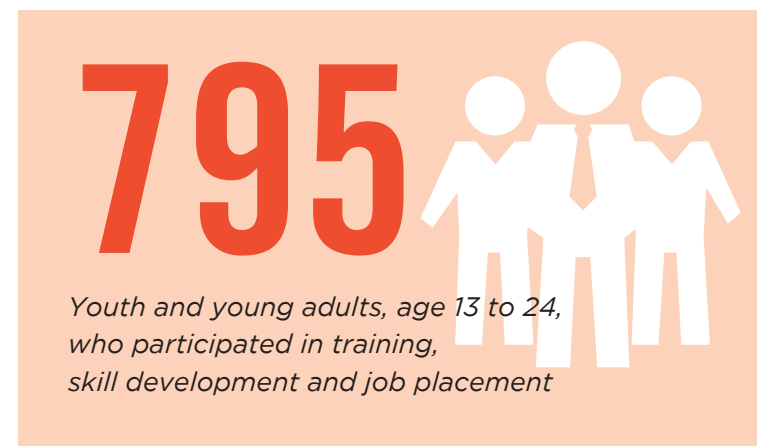
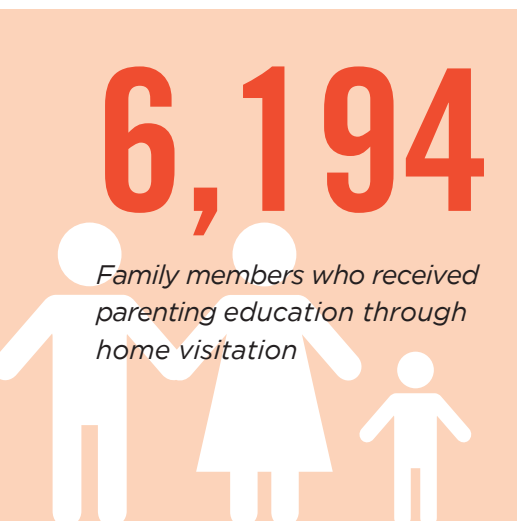
Youth and adults who were provided emergency housing

9,939

Adults and youth who received mental health services

66,537

Youth and adults who received a nutritious meal



Stories of Change



United Way of the Midlands' intent is to nurture strong local partnerships, engage in meaningful collaborations and make program investments that empower people to grow stronger, and leave poverty behind.

Thanks to those who give and volunteer, UWM is helping our neighbors write a new chapter in their life stories. A chapter that begins with positive change.

Terri & Amber – Boys Town of Iowa's In-Home Family Services, Father Flanagan's Boys Home

When Amber was diagnosed with autism, her mother, Terri, needed some help figuring out the best ways to interact with Amber and to work on her behaviors, both in the home and at school. Through the Boys Town of Iowa In-Home Family Services program, Terri was paired with a local counselor who stopped by her home and helped her work with Amber. By learning the best ways to discipline and teaching Amber how to interact with others, Terri was able to build on her relationship with her daughter. Amber is improving in school and in her interactions with other students and teachers, thanks to the program. Mother and daughter continue to learn, and their connection has never been better.

*Nicole – Phoenix House, Catholic Charities
Diocese of Des Moines, Council Bluffs*

An abusive and nearly deadly relationship sent Nicole to Phoenix House, a United Way funded domestic violence shelter operated by Catholic Charities Diocese of Des Moines in Council Bluffs. The shelter gave her the support and guidance she needed to become independent and confident in she and her daughter's future. Today, she's graduated from college and wants to become an undercover police officer. And it's thanks to the generosity of community supporters that Nicole and so many others are able to leave their abusers and find safety, confidence, and happiness.





Trae – Hope Employment and Learning Academy, Hope Center Inc.

As a child, Trae was headed down a negative path. He was a troublemaker, constantly getting suspended from school. He needed someone to help set him on a better path, and he found the support he needed at Hope Center Inc. At the Hope Center, he was able to turn his life around, putting more effort into his schoolwork and finding guidance from staff and his peers. Today, after graduating from high school, he is attending college to become a physical therapist. His future is bright, thanks to the years of support he received from Hope Center Inc.

Stories of Change

Stacie, Arionna, Tayonna & Aaliya - P4K Pathway Program, Partnership 4 Kids

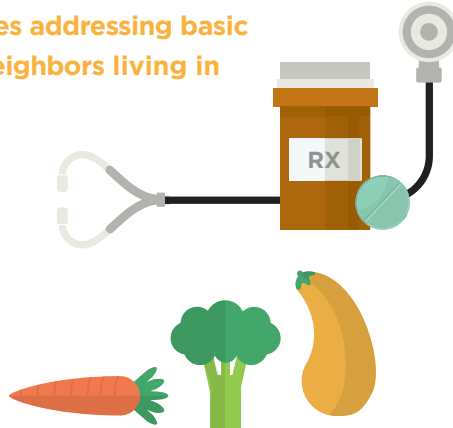
Arionna, Tayonna and Aaliya needed a mentor to help them navigate through middle school, high school, and preparation for college. They found that support and guidance through Stacie, their group mentor through Partnership 4 Kids. This unique mentoring program pairs 3 students with a mentor, giving them a chance to bond as a group and learn from each other. Each girl has a strong relationship with Stacie, and with each other, and they're able to discuss their successes and their difficulties openly. The girls continue to thrive and Stacie says she's constantly learning from them, too. Together, they make a great team, and are well on their way to bright future.



2025 Goals

For nearly a century now, the people of Omaha, Council Bluffs and the surrounding area have relied on and partnered with United Way of the Midlands to help fill the gaps and provide the basics for our vulnerable neighbors. To continue this work today, United Way presented, at its annual meeting, 2025 Goals to guide, monitor and align its work in the community with more precision. The UWM Board of Directors has approved these specific and measurable long-range goals that will help keep the organization accountable for positive results from its signature Community Care Fund services and collaborative work with other local partners. The long-term goals are focused on:

- By 2025, over two million services addressing basic needs will be delivered to our neighbors living in or at risk of poverty.



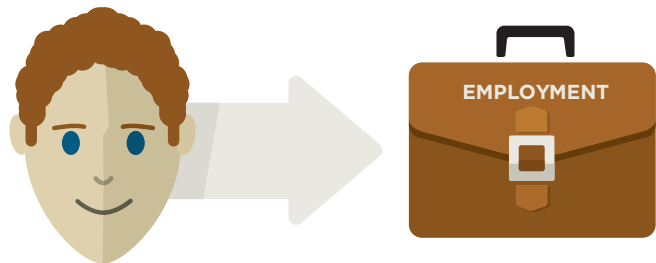
- By 2025, 85% of 9th graders (approximately 7,900 students) are on track to succeed in school and life.



C O M M



- **By 2025, 65% of residents (approximately 564,500 people) in the Omaha-Council Bluffs community are financially stable so they can support themselves and their families.**



The formation and release of the 2025 Goals is designed to provide transparency and accountability for our work in the community.

These long-range goals are informed by and aligned with:

- Areas of impact identified through UWM's strategic plan
- Community needs assessment and subsequent community engagement
- Local and national data on poverty trends and needs
- Existing community efforts including the Douglas, Sarpy and Pottawattamie Counties Health Improvement Plan; Heartland 2050, and the Greater Omaha Chamber of Commerce

The 2025 Goals serve as a critical tool in accomplishing the directive from the 2012 UWM Strategic Plan that called for UWM to work to address some of our communities' most challenging issues. For more information about these goals, please visit our website at www.unitedwaymidlands.org.

U N I T Y

Recognizing Excellence

Excellence in Impact Celebration

United Way of the Midlands held the inaugural “Excellence in Impact Celebration” in Spring 2016, with the purpose of recognizing those in the Omaha-Council Bluffs-Bellevue metropolitan area who go above-and-beyond all expectations to strengthen United Way’s work, and ultimately, its impact on local poverty. The event was hosted by Campaign Chairs Dana and Danielle Bradford.

Speakers included Dana Bradford, and then-UWM Board Chair Lance Fritz, who introduced the very first recipient of the “Excellence in Impact” award.

Ken Stinson was the overwhelming choice for the new honor. Fritz noted Stinson’s long resume of United Way leadership over two decades, which includes chairing the Tocqueville Society, Campaign Cabinet, the Executive Committee and Board of Directors and has been recognized as both Citizen of the Year and Humanitarian of the Year.

In accepting the award, the chair emeritus of Peter Kiewit Sons’, Inc. and chair of UWM’s Strategic Planning Committee reaffirmed his confidence in the community-focused and data-driven work the organization embarked upon in 2012. The result, he said, is a stronger United Way with strong guiding principles, clear vision and values, a highly-engaged board, strategic and transparent investment of donor dollars in programs that are connected to community needs.

Stinson and the Strategic Planning Committee also emphasized the exponential value of UWM’s local collaboration, and a commitment to expanded fundraising going forward.



Raising Funds for Community Change

United Way of the Midlands' support of local basic needs programs and others that encourage success at school and on-the-job is made possible by the generous donations from individuals and companies across the three-county metro area.

That makes fundraising a critical element of the organization's work, and leadership of the annual campaign is key to our community's strength. For nearly 90 years, there have been caring individuals who have led the call for contributions.

2016 United Way of the Midlands Campaign



By any measure, United Way's lead volunteers for the 2016 fundraising effort have made a tremendous impact on our community over a lifetime of work in education and public service. Ken Bird is president and CEO of Avenue Scholars Foundation and former superintendent of Westside Community Schools. Annie Bird served Nebraska students

and families for nearly 30 years as Special Education Coordinator in the Nebraska Department of Education. Together, with the support of 19 highly-engaged community volunteers in their campaign cabinet – including Tocqueville Chairs Jeff and Becky Sharp – the team will raise funds to be invested in United Way's poverty-focused programs that include the 2017-2018 Community Care Fund.

2016 Citizens of the Year

With the support of countless generous donors and engaged volunteers, it is an extremely difficult task to single out individuals or couples for special recognition. There are so many caring and committed community members.

But with the advice and counsel of past Citizens of the Year, United Way of the Midlands is proud to have named a special couple for the recognition in 2016:

Steve Martin and Dr. Amy Haddad



Whether one considers their impact on health care, education, ethics, the arts and any number of important local issues, Steve Martin and Dr. Amy Haddad have invested themselves fully in the Omaha-Council Bluffs metropolitan area and provided valuable leadership. Steve has served as Chair of the

United Way of the Midlands Board, and together with Amy, they led the 2006 Campaign. The following organizations have also benefitted from their leadership: Aksarben Foundation, Voices for Children, and Omaha Performing Arts. Amy is Director, Center for Health Policy and Ethics; Dr. C.C. & Mabel L. Criss Endowed Chair in the Health Sciences, Creighton University. Steve is CEO, Blue Cross Blue Shield of Nebraska.

UWM Leadership



UWM Board of Directors (pictured left to right):

Cameron Burt, Vice President, Holmes Murphy; **Sara Boyd**, President & COO, Omaha Community Foundation; **Rafael Dorador**, Vice President Aftermarket – Central Region, Cummins Sales and Service; **Tim Burke**, CEO, Omaha Public Power District; **Dan Waters**, Partner, Lamson, Dugan & Murray LLP (UWM Board Secretary); **Michael Geary**, Vice President of Human Resources, Kiewit Corporation; **Jerry Byers**, Senior Vice President, Chief Financial Officer, Blue Cross and Blue Shield of Nebraska; **Joy Stein**, Community Volunteer; **Joel Falk**, Regional President and CEO, UMB Bank (UWM Board Treasurer); **Terry Kroeger**, President and CEO, Berkshire Hathaway Media Group; **Dr. Mary Hawkins**, President, Bellevue University (2016-2017 UWM Board Chair); **Shawna Forsberg**, President and CEO, United Way of the Midlands; **Dan O'Neill**, President, First National Bank; **Othello H. Meadows, III**, Executive Director, Seventy Five North Revitalization Corp.; **Jessica Pate**, Community Volunteer; **Rodrigo Lopez**, Executive Chairman, NorthMarq Capital; **Dr. Mark Foxall**, Director, Douglas County Department of Corrections

Not Pictured: **Jerry Crouse**, Vice Chairman and CEO, Tenaska, Inc.; **Lance Fritz**, Chairman, President and CEO, Union Pacific Railroad (2014-2016 UWM Board Chair); **Kathleen Gerber**, Community Volunteer



It takes a team of dedicated professionals to carry out the mission of United Way of the Midlands and serve the community on a daily basis. UWM staff is proud to work on behalf of our donors and volunteers.



UWM Foundation Board (pictured left to right):

Mark A. Lyons; Shawna Forsberg, UWM President and CEO; James F. Svoboda; Phillip Webb; Sharon Marvin Griffin; Rodrigo Lopez, Board Chair; Carr E. Heaney, Jr.; Michele M. Stromp; Harlan O. Falk; Joel Falk

Not pictured:

Art N. Burtcher, Kate Dodge, A. William Kernen

Fiscal Year 2015-16

REVENUES	\$ Millions
Campaign Contributions	\$20.1
Other Revenue Items (Grants, Fees, Investments, etc.)	\$2.9
<i>Total Net Revenues</i>	<i>\$23.0</i>
DISBURSEMENTS	
Funding to Community Programs and Services	(\$16.3)
Community Services Provided by UWM	(\$3.5)
Fundraising and Operating Expenses	(\$3.2)
<i>Total UWM Disbursements</i>	<i>(\$23.0)</i>

*United Way of the Midlands' audited financial statements and Form 990
are available at www.UnitedWayMidlands.org/Financials.*

Community Investments 2016-17

Health \$5.16 M

Behavioral Health, Community Health, Seniors and Individuals with Disabilities programs; funding to Community Health Charities agencies

Housing \$2.26 M

Housing Stability, Emergency Shelter and Transitional Housing programs

Food \$.9 M

Food Services Access and Referral programs

Safety \$2.66 M

Domestic Violence and Sexual Assault, Family Support, Home Visitation and Parenting Education, and Disaster Preparedness and Response programs

Academic Support \$5.32 M

Out-of-School Time and Mentoring, Early Childhood and other Academic Support programs

Financial Stability \$3.10 M

College Access and Skill Development, Youth Employment, and Financial Stability programs

CFC \$.8 M

Combined Federal Campaign - Federal employee campaigns



Total \$20.2 M

Figures are in millions. This reflects funding allocated for year one of a two-year investment.
Community Investments were sourced from the annual campaign, grants and Board-released reserves.

Tocqueville Society

* Deceased
∞ Loyal Contributors
Δ Charter Members
○ Fall 2016

RECOGNITION LEVELS

La Table Ronde

des Millions de Dollars:

Members who have given \$1,000,000 or more cumulatively throughout their lifetime

Ordre de Prospérité:

\$750,000 to \$999,999

Ordre de Connaissance:

\$500,000 to \$749,999

Ordre d'Indépendance:

\$250,000 to \$499,999

La Société Nationale:

\$100,000 to \$249,000

Ordre de Fraternité: \$75,000 to \$99,999

Ordre d'Egalité: \$50,000 to \$74,999

Ordre de Liberté: \$25,000 to \$49,999

Ordre d'Altruiste: \$20,000 to \$24,999

Ordre de Classique: \$15,000 to \$19,999

Membres de la Société: \$10,000 to \$14,999

Step-Up Tocqueville Members:

Members who pledge to increase their contributions to Tocqueville Society level over a three-year period



A community's strength comes from its citizens; those who have vision, who are willing to invest in the future and in the well-being of their neighbors.

Our community's strength comes from members of the United Way of the Midlands Tocqueville Society.

With an annual contribution of \$10,000 or more, Tocqueville donors put their vision into action by strategically investing in a comprehensive network of the Omaha-Bellevue-Council Bluffs area's strongest health and human services.

They inspire the thorough volunteer-led process of vetting those services. Tocqueville members provide United Way with leadership to pursue long-term solutions to our community's most difficult human challenges.

Members have a historic commitment to United Way's support of basic needs, and that funding for food, shelter, safety and healthcare will continue in 2015 and beyond. The Society's philanthropic leadership also inspires a focus on efforts that prepare our children, teens and young adults for a rewarding and self-sufficient life.

United Way's work relies upon the determination and passion of Tocqueville Society members to raise the quality of life for the next generation. There is much to be done. Proudly, that work is advancing today.

La Table Ronde des Millions de Dollars

Robert B. Daugherty Charitable Foundation $\Delta \infty$
Carmen and John Gottschalk Foundation
Holland Foundation
Peter Keiwit* Foundation
Suzanne* and Walter Scott, Jr. $\Delta \infty$
2 anonymous donors

Ordre de Fraternité

Peter Kiewit Endowment Fund

Ordre d'Egalité

Henry A. Davis
Ann and Ken Stinson
Weitz Family Foundation

Ordre de Liberté

Cindy and Mogens Bay
Dana and Danielle Bradford
Julie and Lance Fritz
Howard L. and Rhonda A. Hawks
The Heider Family Foundation
Gilbert M. and Martha H. Hitchcock Foundation
Donna and Matt Johnson
Steph and Jack Koraleski ∞
Gerry and Bruce Lauritzen
Susan and Michael Lebens Family ∞
Mammel Foundation $\Delta \infty$
Patterson Family Foundation
Phillip and Terri Schrager Foundation
William and Ruth Scott Family Foundation
Betiana and Todd Simon
Annette L. and Paul G. Smith
Robert H. Storz Foundation $\Delta \infty$
Marsha R. and Mark R. Wright
Jim and Shirley Young Family Foundation

Ordre d'Altruiste

Judy and Jack Baker
Andrea and Trevor Barton
Patricia and Richard Bell
Anne and Jim Greisch
Dr. Amy M. Haddad and Steven S. Martin
Shirley and Daniel Neary
Dottie and Stanley Truhlsen
Carol and Mike Whetstine
One anonymous donor

Ordre de Classique

Marian and Harold* Andersen $\Delta \infty$
Katrina and Steve Booker
Esther and Daniel Brabec
Diane and Larry Cochran
Ann and Jerry Crouse
Carolyn and John Gehring and Family ∞
Dan Hamann
Ramona and Deryl Hamann
Lori and Paul Hogan
Addie and Robert Hollingsworth
Mr. and Mrs. Harry A. Koch, Jr.
Jackie and Terry Kroeger Family ∞
Diny and Jim Landen ∞
Patty and C.L. Landen ∞
Anna and George Little
Nancy A. and Michael R. McCarthy
Adah and Leon Millard Foundation
Linda and Larry Pearson
Betsy and Bob Reed
Stacie and Rob Reed
Colleen and Scott Schmidt
Eve and Fred* Simon
Kathy and Jim Simpson
Ellen and Richard Slosburg
Martha and David Slosburg
Deb and Keith Spackler
Polly and Jack Struyk ∞
Jack Wilhelmi

Membres de la Société

Daun and Len Adams ∞
 Maureen and Rich Anderl ∞
 Jim Anderson
 Krista and Mickey Anderson
 Katherine Anderson- Hiemstra and Doug Hiemstra
 Sheri and Steve Andrews
 Colleen and Andrew Batcheler
 Jean Creighton Bell
 Barb and Jon Bergmeier ∞
 Annie and Dr. Ken Bird
 Paula and James Blackledge ∞
 Tammy and Andrew Blossom
 Chris and Ron Blumkin
 Susie and Irv Blumkin ∞
 Maureen and Nicholas Borman
 Renee Fry and Patrick Bourne
 John K. and Lynne D. Boyer Family Foundation
 Linda and Matt Brandl
 Joanne and Gerald Bray
 Ted Bridges
 Maggie and David Brown
 Timothy and Terri Burke ∞
 Cynthia and Eric Butler
 Rhonda and Jerry Byers ∞
 Cassling Family Foundation
 Sydney Cate ∞
 Tony and Nancy Chacon
 Claire and Tim Connolly
 Sean Connolly
 Richard and Patricia Cornish
 Susan and Pat Courtney
 Terry and Colleen Cox

Dr. C.C. and Mabel L. Criss Memorial Foundation
 Tim and Mary Crockett
 Jan and Tom Dahlk
 Susi and Bob Dalrymple
 Linda and Tim Daugherty
 Elaine and John DeBoer
 Gail and John DeBoer
 Aimee and Trent Demulling ∞
 Carolyn and David Diamond
 Deb and Bill Dinsmoor ∞
 Dixon Family Foundation
 Meg and Nate Dodge
 Mr. and Mrs. N. P. Dodge, Jr.
 Jan and Michael Doiel
 Ana and Rafael Dorador
 Kay and Jon Doyle ∞
 Melissa and Patrick Duffy
 Ruth and Rupert* Dunklau
 Diane Duren and Drew Collier ∞
 Rae and Bill Dyer
 Quint English
 Stephen Eulie ○
 Lisa and Steve Evans
 Michael G. Fahey
 Rhonda and Clayton Ferguson ○
 Deb and Rex Fisher
 Mr. and Mrs. William A. Fitzgerald
 Shawna and Grant Forsberg
 Sandra and Drew Fossum
 Mike and Shelley Foutch ○
 Steve Frantz
 Kathy and W. Gary Gates ∞
 Carol and Michael Geary ∞
 Kathy and Bill Gerber

Joan Gibson and Donald Wurster
 Nancy and Doug Glass
 Dr. Jeffrey P. Gold
 Barb and Steve Grandfield
 Frances and Mark Grieb
 Donna and Eric Gurley
 Jamie L. Gutierrez and Sergio Mora
 Thomas C. Haley
 Jennifer Hamann ○
 Julie Hamann
 Traci and Tim Harrison, CFP, MSFS, CPWA
 The Harper Family Foundation Δ ∞
 Debra J. and Timothy D. Hart ○
 J.J. and Matt Harvey
 Karen and Kim Hawkins
 Kayla and Chris Hawkins
 Marianne and Fred Hawkins, Jr.
 Gregory A. Heckman Family
 Dr. Anne Herman and Jeremy Vican
 Kim and Jason Hess
 Lisa and Dean Hollis
 Mrs. L. Thomas Hood
 Drs. Shirley and James Huerter
 Teresa and Fred Hunzeker
 Lauren and Michael Hupp ∞
 Sherrye and Wes Hutcherson
 Mark and Alice Jaksich
 Susan and Todd Johnson
 Kris and David Karnes
 Patricia and Brian Keck ∞
 Julie and Eric Keen
 Shane and Jill Kellar ○
 Dr. Lynn Kelley
 Teresa and Kirk Kellner

Mr. and Mrs. John* Kenefick
 A. William "Bill" Kernen Family ∞
 Larry R. King
 Kari and Dan Kinsella
 Julie and Rob Knight ∞
 Mary Ellen and Leo Knowles
 Kent Knudsen ∞
 Cindi and Gregory Konsor
 Sharon and Howard Kooper
 Wende and John Kotouc
 Mary S. Landen
 Janet and Dr. C. Rex Latta
 Emily and Clark Lauritzen
 Maria and David Leblanc
 Greg and Stacey Lickteig
 Tammy and Chris Loeffler
 Tina and Dan Lonergan
 Mary and Rodrigo Lopez
 Paul and Julie Maass
 Nicolette and William Manhart
 Michele and Dan Martin
 Melissa Marvin and Geoffrey Hartig
 Trina and Scott McCollister
 Joan and Tim McGill
 Kathleen and Calvin Meyer
 Tiffany and Galen Meysenburg
 Rondalyn and Robert Mitchell ∞
 Moglia Family Foundation
 Wendy and Mike Moran
 Anne and John Nelson
 The Noddle Family Charitable Foundation ∞
 Mary Ann O'Brien
 Kathy and Joe O'Connor
 Fern and Dale Olson
 Alison and Dan O'Neill

Dorothy Otis
 The Robert E. Owen Family
 Parker Family Foundation
 Cassandra and Gary Pietrok
 Kathleen and Duane Polodna ∞
 Teri A. and Ronald N. Quinn
 Ginny and Marty Reagan
 John T. Reed ∞
 Jennifer and Robert Richardson
 Cindy and Steve Ritzman ∞
 April and Kenny Rocker ○
 Mindy and Barry Ruffalo
 Amy and Mike Ryan
 Constance M. Ryan
 Deb and Tom Sanders ∞
 Barb and Ron Schaefer
 Joann Schaefer, M.D. and Phillip Haines, GySgt USMC (Ret)
 Amy and Jeff Schmid
 Stacy A. Scholtz
 Suzanne Shore and Pete Ricketts
 Mr. and Mrs. Harley D. Schrager
 Molly and Toby Schropp
 Mary and John Schuele
 Dara and Gerrit Schutté ∞
 Karen and Cameron Scott
 John A. and Dianne M. Scott
 Lori and W. David Scott
 David and Heidi Seeley ○
 Sue and Steve Seline
 Becky and Jeff Sharp
 Cory and Kristi Shaw ○
 Mr. and Mrs. Alan Simon
 Lynette and William Singer, M.D.
 Ellen and Kenneth Stoll
 Janet Strauss Δ ∞

Gwen A. Teeple and E. Lyle Kinley, Jr.
 Sue and Lynden Tennison ∞
 Gayla and John Thal
 Ellen and Scot Thompson
 Brad and Ann Thrasher
 Ann and Kurt Tjaden
 Tracy and Matthew Tondl
 Christopher Tonniges ○
 Deb and Lew Trowbridge ∞
 Danene Tushar and Scott Moore
 Tony and Micki Urban
 Edward J. Vidlak
 Deb and Mike Wade
 Julie and Jim Wajda
 Sarah and Tom Waldman
 Karen and Mark Warner
 Tricia and Mark Weber ∞
 Roger W. and Judith Fraser Webster
 Kelvin and Beth Whited
 Brenda and Kevin Wichman
 Jane E. and Douglas S. Wignall
 Beth and Tim Wilson
 Pam and Rick Witt ∞
 Nancy and Philip Wolf
 Frederick E. Wooldridge
 Mr. and Mrs. Michael B. Yanney Δ ∞
 John and Lyn Ziegenbein
 8 anonymous donors

Step-Up

Kate and Jeff Betsworth
 Julie and Robert Biddlecombe
 Jerry O'Flanagan

United Way of the Midlands Foundation

Just as the annual campaign supports United Way's poverty-focused programs and services today, the UWM Foundation is focused on making sure United Way strengthens the community for many years to come. Using the same high standards that result in funding for strong programs that address today's human service challenges, the Foundation is committed to providing long term support that will help keep the community strong as local needs evolve over time.

Gifts to the Foundation are managed by the local UWMF Board of Directors, led by Rodrigo Lopez, and support the network of poverty-focused Community Care Fund programs that provide basic needs services like food and stable housing, and programs that reinforce success in school and on-the-job.

The UWM Foundation is exploring the creation of a volunteer network of area retirees who would use their skills and experience to support United Way's mission to empower people to achieve financial stability.



RECOGNITION LEVELS

Million Dollar Roundtable: Recognizes donors who have contributed or pledged over \$1 million dollars to the Foundation to benefit our community over the long-term.

Tocqueville Legacy Circle: A special group of Legacy Donors. Members have chosen to provide a perpetual \$10,000 gift or above to the community by pledging a minimum of \$225,000 through cash or their estate plans.

Cash & Realized Foundation Gifts: Gifts received in the 2014-2015 fiscal year, such as gifts of cash, memorial gifts, realized bequests, appreciated stocks, lead trusts, property and real estate.

Legacy Society: Recognizes the generosity of all those who have chosen to leave a legacy gift, of any amount, to our community through estate or planned gifts to United Way of the Midlands.

The following donor listing represents known commitments to the United Way of the Midlands Foundation:

Million Dollar Roundtable

Dorothy Becker
Peter Kiewit Endowment Fund
Ellen C. Karnett Trust
Tilly Faier Simon Memorial Endowment

Tocqueville Legacy Circle

Dorothy Becker
Ellen C. Karnett Trust
Ronald M. Lewer
Carmen and John Gottschalk Foundation
Peter Kiewit Endowment Fund
Tilly Faier Simon Memorial Endowment
Tracy and Tim Harrison, CFP, MSFS, CPWA
1 Anonymous donor

Cash & Realized Foundation Gifts

Sharon Marvin Griffin
Ron Lewer
Chadwick Storlie
Ryan and Jennifer Strawhecker
Melanie Welch

Named Funds

Karen G. Bricklemyer Fund

Former United Way of the Midlands President and CEO Karen Bricklemyer passed away on July 28, 2014 at the age of 47. Karen was loved by her coworkers and family. During her time as President, United Way raised over \$68 million dollars for the community. The Karen G. Bricklemyer Fund was created at the request of her family and those at United Way to remember her legacy. Over 115 community donors including local corporations and non-profit agencies contributed to her fund after her passing in 2014.

Legacy Society

Bernardo Ayala
Nigar Babayeva
Peter M. Beers
Trevette Brown
Dinesh Chandel
Danielle Denise Cheatom
Pei Xian Chen
Brian Detweiler
William L. Donaldson
Donald Ertle
Norman J. Farrington
Marie R. Galda
Nikki Green
Sharon Marvin Griffin
Dwain R. Horn
Haibo Huang
David Johnson
Christina D. Kahler

Mary E. Kitzman
Noran Knobbe
Claire Kushner
Fordjour K. Kyei
Susana Lizcano
Kevin Luczynski
Kumar Gudar Mahesh
Bhushan Makade
Steven Malousek
Zachary Charles McMahon
Terry McNeal
Diane Moore
Anita F. Murphy
Lartee A. Myers
Soma Sundaram Natarajan
Joseph M. Nicholson
Melissa Nieman
Qinge Ouyang

Pinaki Panigrahi
Jillian K. Petty
Elisabeth Nicole Pflanz
Webb Phil
Gary Lortz
John Quade
Matthew J. Richardson
Manuel Rosas
Ivan Stoyanov
Tahir Tahirov
L.B. (Red) and Jann Thomas
Anthony D. Tipler
Daniel Torres
Khiem Tran
Mark A. Weber
Michael C. White
Yujie Ying
7 Anonymous donors



Bridgebuilders Society

RECOGNITION LEVELS

Platinum: \$7,500 to \$9,999

Gold: \$5,000 to \$7,499

Silver: \$2,500 to \$4,999

Bronze: \$1,000 to \$2,499

* Deceased

∞ Loyal Contributors

Δ Charter Members



The United Way of the Midlands Bridgebuilders Society is a group of individuals who have chosen to set the pace for the rest of the community with an annual gift of \$1,000 or more. The contributions represent a vital part of United Way funding, and they help encourage others to give to the best of their ability.

Membership in the Society represents a high-level commitment to our community, and a desire to help “bridge the gap” for people-in-need... from their dreams of independence to reality.

Platinum

Diane and Terry Cameron
Ken and Kim Lawonn
Dr. Edward and Sally Malashock Δ
Cory and Kristi Shaw
Lisa A. Weber
Anonymous

To view the list of Bronze Bridgebuilders, please refer to page 28 of the online version of this document, at www.unitedwaymidlands.org

Gold

John and Linda Beacom
Brick Bennington and Amy Stogdill-Bennington
Cindy and Rich Berkland ∞
Denise and Bradley Britigan
Lori Bruck and Dave Neubauer
Brian and Deb Desigio
David and Carol Dickey
Mike and Shelley Foutch
Don Geier
Eric and Susie Grundke
Timothy D. and Debra J. Hart ∞
Mary Heng-Braun and Robert Braun, Jr. ∞

Edward H. Hengemuehler ∞
Kenneth and Irma Hunt
Eric M. Johnson
Steve and Patricia Kaniewski
Thomas and Stephanie Kastrop
Jane and Gary Kenagy
Maureen and Richard Kizer ∞
Robyn and L. James Kortan ∞
Kari and Tim Kudron
Michelle and Jeff Lebens
Christopher and Michelle Leitner
Gregory and Stacey Lickteig

Sara and Jim Masters
David and Sarah Miles
Rosanna Morris
Royce and Susan Ramsay
Dr. Pamela and Greg Schwalb ∞
Ed and Alice Shada ∞
Gail and Robb Tavill
L. B. “Red” and Jann Thomas Δ ∞
Phillip Tomek
C. L. Werner Δ

9 Anonymous donors

Silver

Stephen and Joy Abels
Daniel and Leigh Anne Alm ∞
Jeni Alm
Lori and Chris Amberg
David and Melissa Anderson ∞
Doug and Bonnie Anderson
Kathryn M. Anderson
Ann and Brad Ashford ∞
Tamara Bacchi
Jerry & Jeanie Banks
Ralph and Joan Batenhorst
Rex Beck and Susan Grant ∞
Martin and Jane Beerman ∞
Robert N. Belt
Mark and Jacqueline Bendon
Ty Bilderback
Gail and James Binderup
Robert and Sharon Bloechle Δ
Fran Blumkin
Adam and Ashli Brehm
Anne Breslow-Davies
Amanda and Kelly Brewer
Michael L. and Melissa A. Brown ∞
Travis Bryant
John and Kim Buckley
Dr. Mary E. Burns and Patrick J. Burns, Sr. ∞
Kevin E. Burr
Alan and Martawn Byers
Alisa and Curt Caldwell
Laurie and Pat Callahan
Delman A. Campbell ∞
Tammy and Darren Carlson
Teresa N. Carnazzo
Susan L. Chidester
Rita M. and Grant J. Christensen ∞
Roberta and Phillip Christensen
Nicole A. Cleveland
Kim and Wayne Clure ∞
Russell and Kelly Collins
Barbara and David Connell
Jill Coyne ∞
Melissa and Jim Crawford

Dennis Cronin
Thomas and Beth Culross
Howard and Stephanie Daubert
Kim F. Duncan
Edward and Ann Easterlin ∞
Irene Ecklund
Rick and Lori Elliott ∞
Grant W. Empson
Charles and Carol Enke
Marshall & Mona Faith ∞
Barb & Jim Farho
Stephen Farrell
Kenneth D. Feaster
Kevin and Lanel Fenster
Donald and Tammy Fibich
Dr. David and Rev. Jody Filipi ∞
Tate and Deise Fitzgerald
Shari Flowers
Kim M. Folta
Timothy Francis
Rosemary and Dick Frandeen ∞
Patti J. and Steven C. Franz
Gregory Garrison
Bruce and Michelle Gerhardt
David and Jennifer Gnuse
Traci and Jeff Gohr
Kathryn Goodman
Mark Grohe Family
Nancy and Jerry Gruwell
Doug and Tracy Gulden ∞
Theresa and Bob Gunia
Jason and Ia Hagan
Dean and Crystal Hagelstein ∞
Robin Hamilton
Patrick Hanlon
Mary and James Hawkins
Mr. and Mrs. Bryan M. Hearn
Bradley and Courtney Heisey
Timothy C. Held
Mr. and Mrs. Terry Helphrey
Dee Henry
Susan A. Henry
Mark and Marsha Hewett
Warren and Julie Higgins ∞

Michael and Shelley Homa
Steve and Carol Hughes ∞
Felicia Hutnick and John Kaiser
Karen and Tom Jacobi
David and Dawn Johnson
Jay Johnson
Michael Joiner and Nancy Bucknell
Katherine and Andrew Jones
Mary and David Jones
Robert and Dana Jones
Jeff and Dawn Judkins
Gloria and Howard Kaslow Δ ∞
Justin Kavan
Mary Ann and Scott Keep ∞
Brandyn Keithley
Shane Keller
Carl and Robin Kempkes ∞
Lisa and Brian Ketcham ∞
David and Candi Kirkwood
Chris and Gloria Kisicki
George E. Kleine
David Knutson ∞
Rama K. Kolli
Steve Konnath and Jane Campbell
David Kramer
Rebecca Kramer-Hittner
Shawntell and Bruce Kroese
Catherine and Anthony Kuester
Donna Kush
Paula and Doug Lauver
Kevin and Kim Lewis
Andrew Lieben
Steve Likes ∞
Alicia and Steve Loftus
Bernard J. Lohaus ∞
Cameron and Stephanie Ludwig
Gina and Chris Lypaczewski ∞
Carl and Fany Macchietto ∞
Debbie and Jan Mazgaj
John and Jill McAdams ∞
Todd and Barb McQueen
Tom and Linda Mertz
Anna Messersmith ∞
Mike and Brenda Michalski

Lynne and Paul Miller ∞
David J. Moline
Matt Moore
Darrel and Susan Moreland ∞
Louis Paul Morris
Samantha and Mitchell Mosser
Don and Cindy Munchrath
Mr. and Mrs. Chris J. Murphy ∞
Joanna M. Murray
Barbara J. O'Bryan ∞
Paul and Sue Ochsner ∞
Stephen II and Lisa Olson
Lisa Pabian
Adam and Katie Page
Dan and Elise Parish Δ
Michael and Jennifer Parker
Jessica and Dennis Pate
Michaela Patterson
Wade Pearson and Jean Doucheay
Raymond Perry
Yvonne Pflug
Chris and Jane Phillips ∞
Mitch and Lori Pirnie
Craig Pleskac
Ken and Beverley Pohlman
Dean Poppe
Elizabeth and Jerry Powell
Nancy Pridal
Tim Prince
Ed and Kelley Prosser
Michelle and Bob Ramaekers
Delana Rauterkus ∞
Maria Reinitz
Jennifer and Jim Richardson
Molly Riley
Amber and Travis Rinehart
Victoria F. and Edward B. Roche
Cate and Ernie Rongish ∞
Amy and Andrew Ross
Joe and Gaye Lynn Schaffart
Nola and David Schettler
Debra A. Schneider
Brad Schroeder
Susan Pistillo Seamands

Joanne Sebby
Sherif and Martha Sedky ∞
David and Heidi Seeley
Scott Simmelink
Jeff Sims
Rebecca and Michael Smart ∞
Scott Smith
Joseph Sneed
Dennis and SunHui Snook
Diane and Dwaine Sohnholz
David and Shannon Spargo
Deb and John Steele ∞
James E. Stewart ∞
Joanne M. Stewart
Susan Stinnett
Maggie and James Summerfelt ∞
Mike and Desiree Summers
Cindy Tederman
Deborah Thomas ∞
Myron and Barbara Toews ∞
Christopher Tonniges
Deaun K. Trayer
Scott and Debra Trofholz ∞
Barbara True
Troy Waller ∞
Brenda and Jim Watke ∞
Tam and Phil Webb
Anne and Arnold Weitz
Katrina Wells
Joni Wheeler
Jacqueline and Edward White
Mr. and Mrs. Thomas D. Whitson ∞
Albert and Kim Whittaker
Clint and Christine Williams
Linda and Ed Willis
Liz Winkler
Joe Wurtz
Stephen L. York
Lori Young and Mark Winkler ∞
Tom and Gina Young ∞
Kelly Zwyer

53 Anonymous donors



Bronze

Carl and Melisa Adamson ∞
Michelle Aden
Anthony Aguilera
Venkata Kiran Ala
Raj Alaparthi
Troy and Sue Alberts
Patricia Alexander
Robert A. Allan
M. Annette Allen ∞
Gregory G. Ammon
Stan and Angie Andersen
Devon Anderson
Robert A. Anderson
Roy Anderson
Tammy L. Anderson
Thomas Andreoli
Amy Andrews
Susan and Lynn Andrews
Thomas Andrews ∞
Matt Anielak
Brenda and David Anson ∞
Kim Armstrong
Kim S. Arnold
Dr. Debra Arnow
Dwayne Asche
Michael Ash
Sandra Ash
Stacy A. Auman
Seressa and Jim Austad
Michael Austin ∞
Dr. Richard G. Azizkhan ∞
Anders G. Backlund
Bonnie and Larry Bailey ∞
Michael Bailey
Scott D. Bailey ∞
Gary and Kim Baker ∞
Steve and Christine Baker

Tom and Amber Baker
Brice and Allyson Ballard
Teresa Banks
Sharron Bannon
Ronald and Engra Banse ∞
Mark A. Baratta
Ovell Barbee
Michelle Barker
Peter Barley
Tim Barner
Clarice and Barney Barnhill ∞
Jennifer Bartholomew
Jean Bartman ∞
S. Bartruff
Michael E. Barwig
Joshua C. Bates ∞
Michael J. Bauer
Judith Bauman
Michael Beatie
Susan Beaton
Teresa A. Beaufait
Robert and Theresa Beck
Ronald and Cheryl Beck
Evan R. Bees
Rebecca S. Bees
Anne Begley
Julie Behrends
Nancy and George Behringer
Shirley Beier
Roxanne and Dave Bekaert
Chad and Brandy Bell
Stephanie S. Bell
Wally Bell ∞
Dave Bellairs
Yolanda Belman ∞
Corey and Charlene Berends
Dale Berg
Thomas W. and Ann M. Berger
Alison A. Berger-Lavine

Eric N. Bergquist
Mike and Joyce Bernard ∞
Millie and Harold Bernstein
Tim Berringer
Pam and Dick Berry ∞
Kusum and Anil Bhalla
Brad and Leslie Biehl
William Bielefeld
Dennis and JoAnn Bierle
Chris Billie
Trish Billotte ∞
Brett Bishop
Thomas Bishop
Tory M. Bishop
Moss Blachman
Richard Blamble
Kathy and Barry Blessing
Eric and Jodi Blick
Marvin S. and Deborah L. Blocker
Emily and Bryan Blodgett
Ray Blomstedt ∞
Brett Bock
John G. Bogatz
Dr. David L. and Judith K. Bolam ∞
Dion Bonam
Rik Bonness ∞
Tim Bormann
Mary C. Borowiak
Paul D. Borseth
William E. Bowes
Brian and Elizabeth Bowman
Sara and Matt Boyd
Wendy Willour Boyer and Jeffrey
Carney
J. Chris Bradberry
Peter A. Bradley
Phil Brammer
Anne and Brian Branigan ∞
Justin and Leslie Brauer

Debbi and Chris Breeling
David Brehm and Jeene Hobbs
Patrick H. Brennan ∞
Shirley Brick
Al and Suzanne Brinkman ∞
Brian and Crystal Brislen
Mark Bristol
Cori Brock
Mary M. Brockelsby ∞
Bret Brocky
Kim and Greg Brokke
Pat and Tami Brookhouser
Sue Brookhouser
Amy and Dwayne Brown
Darla Brown ∞
Donna and Tony Brown ∞
Doug and Sharon Brown
Jannette Brown
Roderick W. Brown
Tracey and Jonathan Brown
Brad and Lori Browne
Brian and Kate Brownrigg ∞
Dr. M. Martha Bruckner
Linda L. Brue ∞
Jim Brust
Betty and Jim Gregware
Michelle and Ron Bucher ∞
Tod Buckingham
Keely L. Buesing, M.D.
Ed Buglewicz
Steven Bunc
Ken and Kim Bunnell ∞
Max and Susan Burbach
Karol Burchfield
Matthew Burke ∞
Matthew Burke
George S. Burkoski, Jr.
Jon W. Burlingham ∞
Steven C. Burnham

Byron Burns ∞
James Burns ∞
Mr. Cameron Burt
David Bushey
Marc and Jenny Butterfield
Loree and Cecil Bykerk
Sam and Tammy Calabro
Daniel Caldwell
Thad and Sharon Call
Craig Callahan
Lindsay Calliguri
Lori J. Calub
Chris Campbell
Corey and Terri Campbell
John and Renee Campbell
Mark Campbell
Roshelle Campbell
Joan Cannon and Gary Biggs ∞
Roman Cano
Kimberly L. Cappellano
Ken and Hala Carbullido
Kate and Mike Carlson
Lisa and Glenn Carlson
Joan S. Carnaby ∞
Scott and Deanna Carnahan
Mary Carnazzo
Lori Carney
Benjamin Carrick
Bryan and Betsy Carroll
John Caruso
Carla Casper
Cristina V. Castro-Matukewicz
Tami and Mark Cerny
Angel Champion ∞
Rhonda Chantry
Regina Chapman
Mike and Christine Charleston
Jean Chavez
John A. Chekal

Renee and Mike Chekal
 Cullen Chollett
 Nathan and Vicki Christ
 Andrew R. Christensen
 Christopher Christensen
 Colleen and Joel Christensen
 Stefanie and Erik Christensen ∞
 Kurt and Becky Christiansen ∞
 Mark and Dawn Chronister ∞
 Chris Chung
 James Church
 Colleen Ciciulla
 Steve Cizek ∞
 Bryan and Joan Clark
 Debra and John C. Clark ∞
 Lissa and Dwight Clark
 Michelle and Ryan Clark
 Mindy J. Clark
 Trisha Clary
 John and Taryn Clatanoff
 Diane and Dan Claussen
 Barry Cleaveland
 Travis G. Clemens
 Fred and Nora Clingman
 Jeff A. Cloyed
 Diane and Martin Coalson
 Kara and Nathan Coberly
 Marlene and David Cohen
 James and Lois Colburn ∞
 Dave Cole
 Cindy and Keith Colligan
 Philip and Ronda Colling
 Gini Collins
 Matthew Cone
 John and Peg Conley
 Silvia and Bill Conley
 Terry and Lisa Connealy
 Royce Connerley
 Sean and Melanie Connolly

Jason R. Conway
 Kent J. Conway
 Gary Conyers
 Dean Cook
 Linda Cook
 Joel Cooley
 Antoinette Cooper
 Debbie Cooper
 Gary L. Cooper ∞
 Scott Cooper
 Danny Corely
 Mary and Patrick Corrigan ∞
 Tom and Amanda Corrigan
 Janet and Frank A. Corritore, Jr. ∞
 David and Stephanie Cota
 Doug and Susan Couron
 Kathy and Larry Courtage
 John and Tracy Cox
 Michael C. Cox
 Steve and Heather Craig
 Tom Cramer
 Judy Crosby
 Gary and Peg Crouch ∞
 Melissa J. Cruickshank
 Steven Cudd
 Janet Cuddigan
 Dennis Cullen
 Dennis A. Cunningham
 Jen Cunningham
 Krysti Cunningham
 Mark Czerwinski ∞
 Mercedes Dahlquist
 Steve L. Daigle ∞
 Nandita and Malay Dalal
 Mark and Linda Daly
 Mr. and Mrs. Kevin J. Damme
 Carolyn J. Dankowski
 Phil Danner
 Lori Dasenbrock

Sandy Dasenbrock
 Ellen and Kevin Dasher
 Mary and Hal Daub ∞
 Jay Daubman
 Elisa and Drew Davies
 Paul and Martha Davis
 Rowena M. Davis
 Sharon L. Davis
 Troy M. and Marta E. Davis
 William B. Davis ∞
 William B. Davis
 Kyle and Lori DeBuse
 Robert L. Dedrickson
 Patrick Dees
 Phil and Nancy Dehn
 Naomi Deines
 Kirk and Leslie Delperdang
 Connie L. Deminski ∞
 Laura and Jason Demman
 Corey Dencklau
 Syl and Robin Dennie
 Dianne Desler ∞
 Rod and Connie Determan
 Gary Devlin
 Robyn A. Devore
 Dave and Jackie DeWeerdt
 Kathy Dewell
 Corey Dickmeyer
 Taylor Dieckman
 Lori and Chad Dittberner
 Jennifer and Lance Dixon
 Joshua Dixon
 Joyce Dixon ∞
 Nghia Do
 Mike and Sue Dobel
 Rod and Jan Doerr
 Mo Doghman ∞
 Mark Dolsky
 Norine E. Domenge

Gabrielle Domenge ∞
 Bill and Beverly Donaldson Δ ∞
 Stu and Dari Dornan
 Bob Dorr
 Peggy L. Doty
 Alan A. Douglas
 Tony Dowling
 Megan and Eric Downing
 Steve Dowse ∞
 Brenda Draheim
 Mark and Lisa Draper
 Jeff Drelicharz
 Michael Drelicharz ∞
 Julie D. Driftmier
 Kyle D. Driescher
 Lori Druse ∞
 Aaron Dubberly
 Walter and Tara Duda
 Michael Duncan
 Dr. Robert and Kathleen Dunlay
 Eric Dunning
 Steven L. Duplantis
 Scott and Jodi Durbin
 James M. Dwornicki
 Bill and Janis Dwyer ∞
 Michael Eastman
 Craig and Stacy Ebel
 Stacy and Mike Ebeling
 Chris Edwards
 Matthew Ellis
 Mark Engelbart
 Kathy English
 Corey Erdkamp
 Christina and Wayne Erickson
 Erik Erickson
 Don Erikson
 Todd Erisman
 Donna and Dave Erker ∞
 Lynn Espeland and David Kain ∞

John and Kathy Estes
 S M Estes ∞
 Lawrence Etienne
 Stephen Eulie ∞
 Jan Evans
 Joseph A. Evans
 Sydney, Quincy, and Leilani Evans
 Robert and Judith Evans ∞
 Jennifer E. Everett
 Jean L. Everhart
 Harlan O. Falk ∞
 Joel and Stacey Falk
 Ron Faltin
 John R. Farmer, Jr.
 Monique Farmer
 Jean and Jim Farrell
 Todd Feilen
 Paul Feilmann
 Julie Ferguson
 Teresa and Shawn Fernald ∞
 Michael Fernen
 Thomas Ferony
 Cynthia A. Ferris, M.D.
 City Councilman Pete Festersen
 Dr. Kate Fiantdt, FNP ∞
 Percy Fields III
 Jessica Fink
 Kevin and Linda Finn
 Joseph P. Finnegan
 Bill and Susan Fisher ∞
 Mary Fisher
 Stephen Fisher ∞
 Susan Fjelstad
 Susan Fleetwood ∞
 Andy and Annette Fletcher
 Roger A. and Pamela L. Fleury
 Edgar Flores
 Brian P. Flynn
 Jeff E. Focht



Bridgebuilders Society

* Deceased
∞ Loyal Contributors
Δ Charter Members

Bob and Sue Foehlinger ∞
Melinda Foley
William T. Foley ∞
Cate Folsom ∞
Joseph Folta
Roland Fortner
Robert Foster
Amy M. Fox
Mike Francis
Michelle R. Francis ∞
R. Brett Frankenberger
Diane and Mark Frans
Debra Frazier
Randy Fredericks
Becky and Charles French
Jay and Trina Frisbie
Don and Jo Fritz ∞
Richard J. Fruge ∞
Robert A. Fugel, Jr.
John Fuller
Kevin and Maryann Fustos
Nichole Gacke
Judy Gale
Dr. David Gannon
Andrea Gansen
Karen Ganzlin
William Garber
Jim Garbina
David and Linda Gardels
Greg and Rachel Garlock
Michelle Gartner Family
Ronald W. Gatzke
Marilyn and John Gaudreault
Gary & Theresa Gauger
Tom Gaughen ∞
Katherine and David Gazzetta
Jon A. Genoways
Dixie Gerhart
Julie Wiman

David M. Giandinoto
Bryson Gibbs' Family
Steve and Chris Gilbert
David Gilinsky and Katherine Finnegan
Charlie Gill and Elizabeth Molloy
Bob Gillen
Sam and Amanda Gilmore ∞
Rita and Ivan Gilreath
Thomas Gilsdorf
The Family of Charles F. Glenn
Robert J. Glorvick, Jr.
Chris and Jen Goble
Anthony Goff
Christine L. Goldsberry
Richard O. Gommel
Meg and Jeff Gonka
Joseph Gonzales
Derrick A. Gonzalez
Chris Goodburn
Deborah G. Goodkin
Rita and Roger Goree ∞
Lisa and Jim Grabenbauer
Renata Grafig
Daniel and Kathleen Grafton
Darlene R. Grandia ∞
Jeff and Karen Grandstaff
Timothy Grant
Denise Gray
Debra Green
Michelle Greene ∞
Rebecca Gregory
Jean Grem
Robert Gries
Walt and Griffiths
Shari and Lee Grimes
Jeffrey P. Grinnell
John and Marla Grose
Kathy and Mike Gross

Peggy Grosskopf ∞
Tali Anne and Gary Grosz
Jim Grotrian
Steve Grove
Daniel Gruenes
Tom Grutsch
Traci and Larry Guenther
Michael P. Guinane
Debbie and J.C. Gum
Sherri and Dennis Gunderson
Meghan Gunia
Kathryn R. Gurnett
Eric Guse
Alison M. Gutierrez
Timothy and Kristine Hacker
Samantha Haggard
Janis and Dr. John Haggstrom ∞
Bill and Marnie Hahn
Carol and Howard Hahn ∞
David M. and Kathy Hahn
Lisa and Travis W. Hall
Michael and Trisha Hall ∞
Susan and Nigel Hall
Thomas Halpin
Kevin Halstead
Patrick A. Halsted
Jennifer Hamann
Lee and Jennifer Hamann
Brandon D. Hamm
Rami and Hollie Hanash
John and Ibbly Hancock
Lee and Jennifer Handke
Bryan Handlos
Randall L. Hanks
Kenneth Hanna
Brant and Deanna Hanquist
Allen Hansen
Anthony and May Hansen
Cynthia A. and Douglas M. Hansen ∞

Richard B. Hansen ∞
Bill R. Hansher ∞
Daniel M. Hanus
Richard A. Hardin
William F. Hargens
Corbin and Erin Harms
Brian L. Harr
Lawrence F. Harr
Peg Harriott
Tony Harris ∞
William Harrold
Brittney G. Harsha
Jolie Harstad
Cynthia J. Hartigan
Hartley Family Foundation
Chad and Michelle Hartnett
Robert Harty
Gary Harvey
Kelley Harwood
Valerie Harwood ∞
Darrell W. Hasty
Amy and Tony Hatcher
Anthony L. Hatcher
Christine G. Hathaway
Jean Hathhorn
Maril Hauber
Justin Haugen
John (Jack) J. Hawk, Sr.
James Haynes
Kyle J. Haynes
Krista Hazuka
C. E. Heaney, Jr.
Kathy and Tom Heaney
William H. Heavey, Jr.
Michael and Barbara Hechtner
Bambi L. Heckerman
Julie and Dave Hefflinger
Wes C. Hehn ∞
Wade C. Heidemann

Doug and Angie Heimes
Rhonda and Dave Heineman
Jon and Laura Heisterkamp
Margie J. Heller
Kelly and Jim Hempel
Michelle Hempel
Susan Hendrick and Sandeep Sheth
Anthony R. Hendrickson
Chandra Henley ∞
Stephanie L. Henn
Ruth and Scott Henneman
Ruth and Richard Henrichs ∞
Jan and Eric Henrichsen
Dana Henricksen and Cheryl Henricksen
Marisa and Jamie Herbert
Scott and Jenni Herchenbach
John W. and Jacqueline K. Herdzina
Mary and Steve Hermansky
Rita and Roger Hermesen
Teodoro J. Hernandez
Bret Herndon
Starr and Keith Herrington
Margaret and David Hershisser
Christine Hess
Conal and Pam Hession ∞
Lauren and John Hewitt
Jennifer and Talmadge Hewitt
Cecil Hicks and Nicole Brown
Janella Higgins
Dennis M. Hill ∞
Dianna and Terry Hite
Byron R. Hobson ∞
Sandra L. Hobson
Nik Hodgman
Randy Hodgson
Caryn Hohnholt
Erik Hoiekvam
Timothy F. Holland ∞
Ida Holliday

David F. Hollrah
 Yvette Holly
 Cynthia Holman
 Rick Holmes
 Joslynn Hon-Gonnerman
 in memory of Wil and Mary Sells
 Kathy and Greg Hopkins ∞
 Jason Hormann
 Dwain Horn Δ
 Christi Hornick
 Mark Hosek
 Donald R. and Michele R. Hotz
 Julia A. Hoult
 Karen and John Hovanec
 Terry Hovey
 Jeff Huber
 Michelle Huber
 Robert J. Huck
 Dick Huddleston ∞
 John and Julie Huerter ∞
 Jeff Huether
 Todd Huffman
 Kathleen Hughes
 Lin and Denny Hughes
 Sam B. Hughes
 Allan Hull
 Wood Hull ∞
 Jeff Hultgren
 Benjamin Humann
 Cynthia L. Hume
 Doug and Brenda Hummel
 Gerald and Mary Hunt ∞
 Jeff Hunt ∞
 Teresa Coleman Hunter
 Jeff Huntington
 Jennifer and Rodney Hurley
 Allison Hurt
 Scott and Teri Huscroft ∞
 Dave and Mollie Husman ∞

Mike and Peg Huss ∞
 Hasan Hyder
 Patricia Insley
 Michael and DeAnn Intrieri
 Scott and Jill Irwin
 John Ivester
 Russel R. Iwan ∞
 Leland Jacobson
 Ruth M. Jamieson ∞
 Mr. and Mrs. Lonnie Janecek ∞
 Grant and Sara Janke
 Christi and Tom Janssen
 Tim and Jennifer Jeffrey
 Ken and Sandy Jenkins ∞
 Blake Jenny
 Gail Jensen
 Gloria and Jeff Jensen ∞
 Tom and Mary Ruth Jensen
 John and Nicole Jesse
 Richard and Janet Jizba
 C. Jodlowski
 Heidi and Ron Johansen
 Joe and Jamie Johns
 Beth and Jim Johnson
 Carrie and David Johnson
 Craig Johnson
 Donna Johnson
 Garry and Loraine Johnson ∞
 Gary Johnson
 Jay and Regina Johnson
 Larissa Johnson
 Leah Johnson
 Lori Johnson
 Mitzi L. Johnson
 Nadine Johnson and Robert
 Burroughs
 Troy Johnson
 Victoria Johnson
 Virgil and Ruth Johnson Δ ∞

Craig Johnston
 Benjamin Jones
 Daniel Jones
 Howard Jones
 Kathryn Jones
 Vernie and Carter Jones
 Josephine Jordan and Sal Issaka
 Jeff and Kari Jorth
 Vincent Juarez
 Mr. and Mrs. Greg Judkins
 Michael Just
 Ruth and Steven Kable ∞
 Christina Kahler
 Mark and Mary Kaipust ∞
 Chris Kalkowski
 Scott Kaminski ∞
 Tonya Kaminski
 Matt and Lori Kardell
 Jeffrey Karloff
 Jim Karnik
 Matthew Kasselmann
 Cindy Kastens
 Joe E. Kaufmann
 Kevin Kavanaugh
 Robert J. Keefe
 John Kehoe
 Kevin N. Keith
 Pat and Carol Kelley ∞
 Michael Kelly ∞
 Edwin and Linda Kemp ∞
 Charlie Kennedy
 Ruth Kennedy
 Joe and Kate Kenny ∞
 James and Marilyn Kerkhove
 Paula and Jim Kettler
 Dayle A. Keyes
 Tim and Julie Kiefer
 Maj. and Mrs. Mark Kimball
 David W. King

Douglas King
 Gary W. Kipp
 Chris and Patty Kircher
 Kari Kirchhoefer
 Carol Ann Kirchner
 Mike and Colleen Kirk
 Steven Kirk
 Adam Kirkebak
 Ned Kirklin
 Patricia O. Kiscoan
 Timothy Kiteley
 Matthew and Julie Kizer
 Doug Klahn
 Barry and Kelli Klanderud
 Gail Klanderud
 Mark M. Klasek
 Paula Klassen ∞
 Michael Kleffner
 David and Sara Klein
 Jeffrey Klement
 Daniel A. Kletke
 Chris Klinefelter
 Roxanne Alter and Don Kluthe ∞
 Gregory Knadle
 Erica Knapp
 Steven and Donnet Knapp ∞
 Jude and Stacy Knipper
 Steve Knott
 Jim Knudsen ∞
 Keith Knudsen ∞
 Julie Knutson
 Mihaela Kobjerowski
 Kelly JC Koch
 Tim and Jan Koch
 Michael Koehler
 Allan and Kim Koenig
 Melvin Koenig
 Jeremy Koeppe
 Christy Kofoed ∞

Kevin and Cindy Kohlscheen
 Vicki and Dave Kolarik ∞
 Christopher Kopiasz ∞
 Corey and Liz Kopiasz
 Randy Korth
 Christopher Koslosky
 Kelly Kotszewa
 Jeff Koterba ∞
 Anthony Kouba
 Travis and Becky Kraemer
 Brian Kramer
 Jon and Tara Kramer
 Melissa M. Kramer
 Lee Kramolisch
 Paul and Michaela Kramper
 Chris and Jillyn Kratochvil
 Denise and Phil Kreski ∞
 Santha Krishnan
 K. M. Kroeger ∞
 Steve R. and Angela M. Kroymann
 Jay Kruger
 Derek and Dana Kruse
 Lindsay and Matthew Kruse ∞
 Ken Kucera ∞
 Fred Kuehl
 Michael J. Kuester
 Mary Kuhn
 Tom and Geri Kunkel ∞
 Renae Kurlmel
 Scott Kvammen
 Lisa A. Kwapniowski
 Mack & Jessica La Rock ∞
 Carol Lacroix
 Karen Lagerstrom
 Chuck and Jan Lakso
 Tim and Pam Lammers
 William M. and Michaela Lamson
 Joseph Lang
 Cindy LaPole ∞



Bridgebuilders Society

* Deceased
∞ Loyal Contributors
Δ Charter Members

Jennifer Lassek
Jeffrey Laudin and Kathy Beauchaine
Greg and Debbie Lavitt
Michelle and Michael Lawyer
Julie Lazure
Derek Leathers
TeriSue and Glenn Leatherwood ∞
Gary and Michelle Lebens ∞
Michelle Lee
Weslyene Lee
Craig S. Lefler
Sara and Michael Legleiter
Chris and Lisa Lehan
Lori and Mark Lehman
Bob and Cathy Lembke ∞
Kacey and Joe Lempka
Karen and Gerald Lenczowski
Lori Lentsch
Jason Lenz
Janet Lepaopao
Kim Lesinski
Dr. Nicholas and Karen Levering
Bridget Lewis
Roger and Carol Lewis ∞
Susan Lewis
Tre L. Lewis
Jeff and Anne Leiben ∞
Mike Liebherr
Angela Ligtenberg
Joani and Joseph Lillo
Chris and Gina Limmer
Steve and Amy Lindsay
Lyndsey and Scott Lineback
Tom Lischer
Todd Litjen
Kevin and Luanne Little
Michael T. Loeffler
Marlon and Laurie Lofgren
Michele Lohse

Aaron and Keri Long
Joel and Lisa Long ∞
Robbie Long
Lisa M. Longenecker
Ruben Lopez
Janice Love ∞
Tony and Pam Love
Tom Lowry ∞
Marietta Luellen
Jude and Nan Lui
Ron Lund, Jr.
Jim and Mary Lusk ∞
Marjorie S. Lutz ∞
Mark and Gabi Lutz
Mark and Julie Lyons
Marjorie Maas
Rebecca MacDonell
Duane and Jodi Maciejewski
Hal and Vicki Mack
Dale Mackel
William Mackenzie
J. Terry Macnamara
Dave and Jan Madsen
Deborah Mahaffey
Brian G. and Susan A. Maher
Mr. and Mrs. Rober T. Maher
Jeffery Main
Mary Manero
Dorothy and Craig Margrave
Nicholas J. Marquardt
Greg Martin
Paul Martin
Patrick D. Mascarello
Ann and Andrew Massey
Lynn and Ron Massey
Elizabeth Mastee
Norita and Robert Matt
Mark and Julie Matthes
Billy Matthews

Grant Matthies
Gail Matthiessen
Martin Matukewicz
Steve and Cheri Maxwell
Terrill Maxwell ∞
Ryan Mayberry
Ginger and Bob Maziarz
Mary McArdle
Corrigan McBride-Aguilar
and Jerald Aguilar
Joseph and Mary McCabe
Denise McCauley
Lisa McClane
Samuel W. McClure
Roger McConnell
Kevin S. McCormick
Cynthia McCullough
Robert McCutcheon
Therese McDermott ∞
Shaun and Amy McGaughey
Rick McGee
David K. McGeorge
Patrick R. McGill
Angie M. McGraw
Sandi McGuire
Amy and Mike McKay
Mark McKenzie ∞
Steve and Jennifer McKern ∞
Carl McKever
Henry McKinley III ∞
Deborah and Michael McLarney Δ ∞
Daniel McLaughlin
Phil McLaughlin
Tim McMahan
Joe McManis ∞
Maggie and Michael McMeekin
James M. McMenemy
Mark McMillan ∞
Robert Meder ∞

Jason and Anne Meers
Kenneth and Megan Meier
Mary and David Meier
Will Meinen
Karen and Sam Mele
Merri J. Melvin
Matthew Mercer
Merriex Family
Jennifer and Michael Merrill ∞
Jim and Edie Messerschmidt ∞
Karen and Donald Metzger
Casey and Brett Meyer
James A. Meyer ∞
Jeffrey Scott Meyer
Mike Meyer
Philip and Jane Meyer
Robert Meyer
Aaron Meyerle
Brian Meyers
Christopher J. Meyers
John and Kim Miksich
Stevanne and Garry Milbourn
Brandi and Michael Miller
Jeff and Suzanne Miller ∞
John Miller
Kent E. Miller
Mary Kay Miller ∞
Sara Milnes
Tamra N. Milone
Michael T. Miskowicz
Craig Mitchell
Judy Mitchell
Laura Mitchell
Matthew Modica
Joseph Moise
Stephanie Moline ∞
Daniel Monaghan
Tricia Montague ∞
Brad Moore

Don and Kelli Mooring
Kevin and Bobbie Moran
Mike and Wendy Moran
Jim Morbach
Anne Morgan
Deanna Morrical
Henry J. Morris, Jr.
John F. Morris
Arlis and Phil Morrison
Cindy Mowery
Mike and Sigrid Moylan
David and Michelle Muirhead
Edward J. Mullen
Michael G. Mullin
Robert Mullin, Jr.
Rochelle and Jim Mullen
Tracy Mumford
Brian J. Mundt ∞
Deena Murphy
Donald Murray
Katherine Murphy
Michael Murray
Robert J. Murray
Dan Myers
William Naidenovich
Sarah Labeledz Navarrette
Emily H. Nave
Eldon R. Naven
Matthew D. Neel
Michael J. Neeson
Karen R. Nelsen ∞
Andrew Nelson
Charles E. Nelson
Christine Nelson
John and Susie Nelson
Mark and Cindy Nelson
Scott and Anita Nelson ∞
Thomas Nelson
Rudie Nemec

Cathy Neppel
 John and Kim Neppi
 Christine Neuharth
 Tim Neville
 Lonnie and Debbie Newkirk ∞
 E. R. "Bob" and Phyllis Newman
 Shawn E. and John M. Newman
 Kevin and Cynthia Nichols
 Loyall N. Nichols
 Autumn M. Nickoli
 Tony Nietfeldt
 Troy and Jeanne Nissen
 Allan S. Noddle ∞
 Sherry and Michael Nohl
 Jimmy and Kim Nolan
 Sarah and Marty Nordlund
 Katherine N. Novak
 Richard A. Norton
 Russell Novak
 Larry and Jan Novicki ∞
 The Tim Nowell Family
 Suzanne Nuss
 Russ and Patty Oatman
 Lynette Oberdorfer
 Doug and Lori Obermier
 Diane K. and Cory J. O'Brien
 Kelli O'Brien
 Tom and Dawn O'Brien
 Edward R. O'Connor, PhD
 Drew Oetjen
 Susan Ogle
 Terrence D. O'Hare
 Danielle M. Ohlman
 Steve and Michelle Oiness
 Greg O'Kief
 Douglas S. Oldaker ∞
 Marilyn and Mark Oldaker ∞
 Terry and Karen Olin
 John and Jennifer Oliver
 Louis Olivera

Carl and DeAnn Olsen ∞
 Chris and Kathy Olson ∞
 Stephanie and Eric Olson
 Gary Olson
 Steve and Barb Oltmans ∞
 Claudia and Patrick O'Malley
 Matt and Val Ondrejko
 Mike and Sandy O'Neal
 Brian and Giuli Oppliger ∞
 Smith Family
 Anthony Ori
 Brian Orme
 Rene Orosco
 Patricia and William Ortega ∞
 Jose Orteiz
 Jill Orton
 Doug S. Osborn
 Paul and Lauren Osborne
 Andrea Oswald
 Don and Rita Otis
 Friedhelm Otto
 Dolores C. Owen ∞
 Eric Oxley
 Brenda Paiz
 Al and Valerie
 Jill and Jon Panzer
 John Papproth
 Ryan and Mara Paradis
 Hilary Parker
 Julie and Shaun Parker
 Andra and Matt Parry
 Sheryl and Shane Parshall
 Anshu Pasricha
 Amy Patterson
 Jan M. Patterson ∞
 Thomas L. Patton ∞
 Jean M. Paul ∞
 Kathi Paulsen
 Donald Payton
 Christopher Peach

Steven Peake
 Timothy and Tricia Penne
 Tom and Judy Penney ∞
 Rick Pennington
 Patrick Pensick
 David R. Pesavento
 Paul Petera
 Janette Petersen
 David E. Peterson
 M. Peterson
 Michael and Kathleen Peterson
 Tom and Patti Peterson
 Terri Peterson
 John and Julie Petr ∞
 Tracie Pettijohn
 Aaron and Amanda Pfeifer
 Julie Phillips
 Michael D. Phillips
 Amber R. Phipps
 Ryan Pichler
 Tammy and Larry Pike
 Timothy Pilakowski
 Vince and Cynthia Pille ∞
 Vasu and Sandhya Pinapati
 Jane Pine
 Craig A. Piquette
 Anton F. Pisote
 John Plambeck
 Mary L. Pleiss ∞
 Bryan Pleskac
 Brent and Michelle Pohlman
 R. Jay Poland ∞
 Chris and Jennifer Polenz
 Irina Popa, M.D. and Michael Newcomb
 Greg and Laurie Porter
 Kari and Shane Potts
 Derrick and Amber Powell
 Carrie Powers
 John Pratt
 Leigh and John Prescott

Jay Priefert
 Patrick Prince ∞
 Stephanie and John Pritchett
 Sandi Proskovec
 Carly R. Prouse
 Joe Pruch
 Frank C. Pruitt
 Jim Pumfrey
 Mike A. Quick
 Lawrence and Carmen Quint ∞
 Julie A. Radil
 David Ramcharan
 Geoffrey Ramsey
 Dean Rasmussen
 Thomas Rasmussen
 Lois A. Ratay
 Karen E. Rau
 Dorla and Mike Ray ∞
 Ronald W. Reagan
 Robert Real
 Ruth and Steve Rector ∞
 Pat and Larry Reding
 B.J. Reed ∞
 David W. Reed
 Mindy and Tim Reed
 Michele M. Reed-Ball
 Benjamin N. Reicks
 Beau Reid
 Jay Reilly
 Bryan and Dixie Reinecke
 Jeffrey Reiner
 John Reinhardt
 Connie and Michael Reinhart
 Jeremy and Christy Reinoehl
 Mary Renaud
 Kevin and Linda Renner
 Paula and Eric Renner
 Thomas Rerucha
 Julie Reyes and Family
 Rex Rezac

Marvin Rhodes
 Peder and Melissa Rice
 Michael Rice
 Remy W. Rice
 James H. Rich III
 Brent and Adrieene Richard
 Amy Richardson ∞
 Lisa and Charles Richardson
 Scott and Nicole Riche
 Bob and Cindy Rieke
 Kent and Karen Riesberg ∞
 Mary A. Rieschl
 Stephen Riley
 Tim and Karen Riley
 Scott Ringler
 Louise Rinn
 Suzanne Ritchie
 Rick Rivera
 Doug and Beth Robey
 Angela M. Rock
 Kris Rock
 Larry Rock and Dr. Melissa Garner
 Kenny and April Rocker
 Hector Rodriguez
 Robert Rodriguez
 Mike and Kim Rogers
 Nichol E. Rogers
 Donald Rogerson
 Laura Rogge
 Todd B. and Janet M. Rogge
 Bill and Carole Ann Rohan
 Keith Rohwer
 Keith and Nancy Rohwer
 Debra Romberger
 Karla and Christopher Romereim
 Wayne and Eileen Ronci ∞
 James and Cathy Rose
 Patricia Rose Egbert
 Bill Rosenau
 Rich and Lisa Rosenthal



Bridgebuilders Society

* Deceased
 ∞ Loyal Contributors
 Δ Charter Members

Pam and Glenn Ross ∞
 Marcus Ross
 Anthony Rosso
 Alfred Roth
 Michael and Patrice Roth
 Jason P. Rothman
 Randy and Robbie Rotschafer ∞
 Don Rowe
 James and LaDona Rowings
 Liz and Dan Rubin
 Anup S. Ruia
 Loree Runyan-Pick ∞
 Neil and Natalie Runyon
 Patrick and Cynthia Rupp
 Erin M. Russell
 G. Richard and Carol L. Russell ∞
 James M. Russell
 Joel Russell and Erin Swanson Russell
 Keith Russell
 Rob and Patty Russell
 Timothy Ryan ∞
 Todd Rynaski
 Ruth and John Sage ∞
 Craig and Molly Sall
 Pallavi Samant
 Steven J. Samson
 Katie Sanders
 Becky Sandiland
 Barb and Chris Sanford
 Edward T. and Jeanine L. Sankey
 Lynn A. Sanne
 Mike Santa Maria
 Chrisitne M. Sanz
 Deino Sather
 Jeff and Maria Sauvageau
 Rich Savage
 Greg and Darbi Scaglione
 Steven and Susan Scanlan
 Scott R. Schaefer

Carrie and Jeff Schaffart
 Kendall D. Scheer and Renay Robison
 Claire and Jim Schelble
 Greg and Lori Schilling ∞
 Stan Schleifer
 Deborah J. Schlepp ∞
 Bob and Theresa Schmidt ∞
 Christopher Schmidt
 John Schmitt ∞
 Steve Schmitz
 Jim and Peg Schneider
 Schomers Family
 Dan Schonlau
 Jeff W. Shovanec
 Ann and Mike Schow
 Karen Schrader, MPAS, PAC
 Ryan and Rachel Schroer
 Greg and Brandee Schultz
 Philip M. Schultz
 Robert S. Schulze ∞
 Thomas Schumacher
 Teri A. Schwarz
 Kevin and Shelly Schwedhelm
 Kelle L. Scott
 Tracy Scott
 Adam and Cathy Scurlock
 Kelly Seachord
 Scott and Molly Searl
 Juliann G. Sebastian
 Jeffrey R. Seabee
 Charles V. Sederstrom, Jr. ∞
 Jennifer Sedlacek
 on behalf of Markie Palmer
 Brett and Marci Sesker
 Jacob Setran
 Michelle Settles
 Scott Sevick
 Mick and Marcia Shanahan ∞
 Kristine Shaner

Julie and Will Sheets ∞
 Jeffrey Sheldon
 Kevin Shepherd
 Jim Shields
 Joseph R. Shields
 Greg Shimonek ∞
 Michelle Shradar
 Russel Shue
 Karen M. Shuler
 Jesse and Corrie Shumaker
 Vicki Siderewicz
 Ernest Sideris
 Don Siebe ∞
 Chad and Melissa Siedlik
 Darren and LeAnn Siekman
 Robert Simard
 Adam Simeon
 Mark T. Simon
 Jennifer LW Simpson
 Steven Sinclair ∞
 Jasbir and Renu Singh ∞
 Michael Sitorius
 Jessie Skain
 Jennifer Skibbe
 Daniel S. Slattery ∞
 William L. Sloane
 Scot Sloboth
 Leslie and Bryan Slone
 Mr. and Mrs. Alan Smiley
 Carl Smith
 Everett W. Smith
 Ginger Smith
 Gregory L. Smith ∞
 Pete Smith
 Ryan O. Smith
 Sarah Smock
 Jim Smutny
 Chuck and Karen Snow
 Soda City Stand Up

Leonard and Kate Sommer
 Dr. Michael and Shirley Sorrell ∞
 Catherine Sosso
 Dennis and Peg Souba
 Codi Soule
 Mark Soulliere
 Vern Spackman ∞
 Laura Sparks ∞
 Shirley Spieker
 Dale L. Spier
 Clint and Rebekah Sporhase
 Karen and Tony Spurlock
 Adam R. St Germain
 Michael Staffenbeal
 Steve and Kris Stapp
 Kevin Stark
 Scott Stark
 Judy and Bill Startzer
 Janene Steckelberg
 Jason Steele
 Julie A. Steele
 Mattew Steele
 Wayne Steele
 Ms. Joy Stein
 Mike Stemm
 Michelle Stenslokken ∞
 James Sterling ∞
 Kurtis R. Stewart
 Ginny Stichternath and Andrew Yarnell
 Bradley K. Stock
 Chris and Holly Stockman
 Chris Stockwell
 Grace Stoddard ∞
 Mary and Craig Stoffel
 Katrina and Matthew Stoffel
 Chadwick Storlie
 Ray and Kay Ray and Kay Stoupa
 Paul and Peggy Strawhecker
 Ryan and Jenny Strawhecker ∞

Robert and Sharon Stubbe
 Patrick Student ∞
 Nannette Sudman
 Matthew and Candy Suer
 Jack Sullivan
 Joseph T. Sullivan
 Sandra Suver
 Jim Svoboda
 Michael Swartz
 Twyla Swearingen
 Deanna L. Swertzic
 David and Elizabeth Szymanski ∞
 Jeff, Jeanie, and Sydney Taake
 James and Kathy Talcott
 Joanna and Mike Taylor
 Phil Taylor
 Ron and Joanie Tekippe ∞
 Tamara Teten
 Tim and Daena Thalken
 Betty and Gene Theel ∞
 Mary and Jim Theisen
 Randy and Christa Thelen
 Mike Thesing
 Zach Theimann and
 Catherine Medici-Thiemann
 Chad Thomas
 Paul H. Thomas, Jr.
 Steve and Lisa Thomas
 William and Lu Ann Thommes
 Ann Thompson, PA-C
 and Mike Thompson ∞
 Carolyn S. Davis
 Dennis and Sherry Thompson
 Karen and Steve Thompson
 Kathy Thompson and Robert Rea
 Kevin Thompson
 Tim and Janis Thompson
 Jill Thomsen and Mike Rogers
 Wallace Thoreson

Rick and Laura Thornton
 John Thurber ∞
 Greg and Jennifer Tiarks
 Kathleen Tibke
 Dina and Charles Tilgner
 Sandy and Mark Tillwick
 Ronald Tindall
 Rick and Holly Tiwald
 Regina M. Toman, PhD
 Scott Tomasek ∞
 Gerry and Rosie Tomka ∞
 Janice Tompkins
 Kevin Torczon
 Ryan Tovey
 Martin F. and Frances R. Traynor
 Rob Trebilcock
 David and Wendy Treinen
 Kent Trelford-Thompson
 Chad and Kathy Tremel
 Douglas and Sherri Troupe
 Sheila R. Trueblood
 Garry Truman ∞
 Pam and Greg Twist
 Gretchen Twohig
 Scott and Julie Tylski
 Marcus Tyrance
 Deborah and Mark Uden
 James Udvare
 David and Tami Ulch
 Joe and Christy Ulrich
 Julia and Jim Ulrich
 Sheri R. Uno
 Mark Unverzagt
 Kyle and Brooke Uptmor
 Dalan Urquhart ∞
 Jennay Vacek
 Thomas J. Vaiskunas
 Les Valentine
 Eric Van Beaumont

Ron Van Cleve
 Ryan Van Cleve
 Andrew Van Dyke
 Greg and Karen Van Dyke
 Matthew and Jennifer Van Haitsma
 Robin Van Hove
 Bobbie G. Van Oeveren ∞
 Travis W. Vanderpool II
 Joel and Leslie VanderVeen
 Jay and Amy Vankat ∞
 David VanSickle
 Timothy Vasquez
 Greta Vaught and John Ritland ∞
 Frank and Bryn Venuto
 Julie and Yuri Veomett
 LeAnne Vetter
 Joan E. Villanueva
 Julie Vleck ∞
 Tony and Ryan Vojslavek
 Leslie J. Volk ∞
 Tom and Sandy Von Riesen ∞
 Gary E. Voogd
 Justin Vossen
 Sherry and George (Bill) Wachtler
 Jodi Wacker
 Stephen Wade
 Jeff and Ann Wageman
 John Wagner and Carolyn McNamara ∞
 Matt Walker
 David and Linda Waller
 Anne Walsh ∞
 Kay L. Ward
 Teresa Ward
 Blake and Cami Warneke
 Dave Warren
 Rich Warren ∞
 Tara and Jeff Warren
 Thomas H. Warren Sr. ∞
 Dana Washington

Carol Waszak
 Joseph and Carol Waszak ∞
 Daniel J. Waters
 Joshua Watkins
 Mark and Diana Watton
 Ryan J. Watzke
 William J. Wax
 David E. Weaver
 Alan L. Weed
 John A. and Judy M. Wees
 Jim Wegman
 James D. Wegner
 Scott Weihrauch
 Jim and Francie Weis ∞
 Kimberly Weiss
 Roger Wells
 Gary and Sharon Welna ∞
 Rod and Thyra Welsh
 Kim and Guy Welton
 Nicholas Wertzberger
 Kenneth and Valerie West
 Julia K. Westerfield
 Dave and Lisa Westra
 Donald Wetmore ∞
 Shane and Melissa Weyer
 Wendy Whalen
 John and Amy Wheeler
 Sharon Wheeler
 Andrew White
 Brian M. White
 Paul and Kris White
 Chad Wieseler
 Bill and LeeAnn Wilcox ∞
 Lisa Wiley
 Linda and W. Bruce Wilkie ∞
 Craig D. Wilkins
 Michael Wilkins, M.D.
 Edward E. Willett
 Jo Williams and Steve Urban ∞

Julie and Dave Williams
 Pamela S. Williams
 John and Laurel Willis
 Carole and Andy Wilson
 Carolyn Wilson
 Maegen Wilson
 Phyllis Wilson
 Sarah A. Wiltse
 Todd Wimmer
 Tanya Winegard
 Joe and Lori Wingerter
 David Wirka
 Dan Witthaus
 Brandy Wojtkiewicz
 Craig M. Wolf
 Mark Wolf
 Regina E. Wolf
 Alice and Ed Woll
 Kelly Wolterman
 Vickie Wonder
 Gerette and Russ Wonderly
 Andrew and Lindsey Wong
 Harvey Wood III
 Angel Woodard
 Sandra L. Woodrich
 Mr. Shawn and Mrs. Rachel Woodring
 Tom Wortmann ∞
 Mr. and Mrs. Allen J. Wright
 Joann K. Wright
 Sue and Ken Wright
 Al Wunderlich ∞
 Jessica Wurtz
 Andy Xydakis
 Bill and Kirsten Yates
 Gary and Helena Young ∞
 Heather and Wayne Young, Jr.
 Donghui Yuan
 Jason and Alyssa Zabloudil
 Fred and Amanda Zach

Lorrie Zakrewski
 Marcy and Steve Zauha
 Sandra W. Zdan
 Tom Zegers ∞
 Jess Zeiss
 Sandy Zidon
 Bradley G. Zielie
 Sherri J. Zimmerman
 Chris Zimmers
 Carrie Zoucha

413 Anonymous

Community Strong



A special thank you to the UWM Board of Directors and Committees, UWM Foundation Board, Community Impact Cabinet, Community Investment Review Teams, Campaign Cabinet, Campaign Managers, Tocqueville Women's Initiative, Women's Leadership Council, Young Professionals and the many individual donors, volunteers and partners who make our community strong.



