



UNITED WAY OF THE MIDLANDS 2017 ANNUAL REPORT

**GIVE.
ADVOCATE.
VOLUNTEER.**

United Way
of the Midlands





TABLE OF CONTENTS

BOARD CHAIR AND CEO LETTER	3
LOOKING BACK	4
WHAT'S NEXT?	6
2018-2019 BOARD OF DIRECTORS	8
2017-2018 FISCAL REPORT	9
TOP 100 COMPANY CAMPAIGNS	10
COMMUNITY PARTNERSHIPS	11
CORPORATE CAMPAIGN RECOGNITION AWARDS	13
CITIZENS OF THE YEAR	16
“GIVING FROM THE HEART” AWARD	17
TOCQUEVILLE SOCIETY RECOGNITION	18
BRIDGEBUILDERS SOCIETY RECOGNITION	21
SUPPLEMENTAL WEB LINKS	36



Board Chair and CEO Letter

We feel extremely fortunate to live and work in the Omaha-Council Bluffs metro. Why? Because the residents of our community consistently dedicate their time, expertise and financial support to those who need it most.

This philanthropic spirit cannot be found just anywhere. We understand that it is something organizations like United Way of the Midlands must treasure – and also harness. When we unite our efforts toward common goals, we can help thousands of people grow and thrive.

As we reflect on the past year, the truth of this statement becomes even more evident. Thanks to the overwhelming support we received from the community, we were able to invest more than 91 cents out of every donated dollar back into the Omaha-Council Bluffs metro. As a result, more than 140,000 of our most vulnerable neighbors were able to access a network of supports that met their basic needs and lifted them into independence and stability.

These achievements set us apart as one of the top United Ways in the country – ranked 10th for campaign performance and 17th for operational efficiency out of approximately 1,200 United Ways.

As you can conclude from these results and the numerous other successes detailed in this year's Annual Report, supporters like you have helped us create a stronger, more united community. But as we conclude our two-year investment cycle and begin the next, we know our work isn't any less urgent. Though our community is in a period of economic growth and prosperity, these successes are not felt by all Omaha-Council Bluffs residents equally, especially in certain neighborhoods where poverty is becoming increasingly concentrated. Local nonprofit programs are working tirelessly to address the needs, but they can't do it alone. And neither can we.

United Way of the Midlands needs the support of each and every community member if we are to help our partners deliver vital basic needs services and help families achieve financial stability, but we know the residents of the metro are up to the challenge. Last year, we were honored to partner with more than 40,000 donors, 700 companies, 56 agencies and 3,500 volunteers. We are excited to deepen these relationships and establish new ones, because we are confident that great things will happen in the coming year when we work together.

Our schools will be better because more students will be ready to learn. Our neighborhoods will be safer because more residents will make a productive living. The metro area will be healthier because more people will have access to healthy food. And our community will be a brighter, more welcoming place.

Thank you for the critical role you play in our efforts to lift up our most vulnerable neighbors. As we continue on our journey to a stronger community, we are honored that you have chosen to join us as a partner, supporter and friend.

Jerry Crouse
Board Chair

Shawna Forsberg
President and CEO
United Way of the Midlands

Looking Back

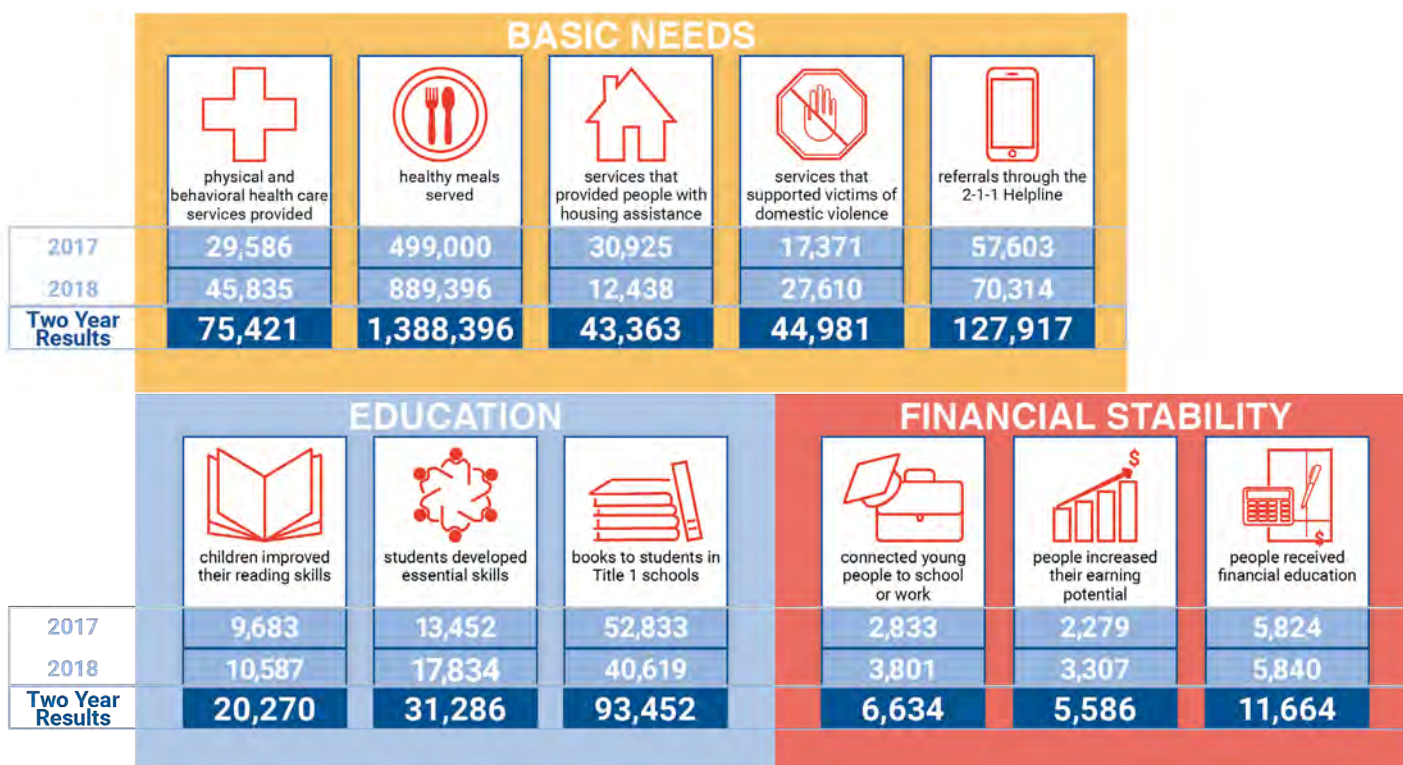
As we reflect back on the past two years at United Way of the Midlands, our hearts are filled with gratitude. It takes special people and a generous town to improve the community we live in. The successes of our first two-year funding cycle prove that you are those kinds of people and the Omaha-Council Bluffs metro is that kind of town – one that invests in the well-being of our most vulnerable neighbors.

When UWM first began our two-year funding cycle in 2016, we were determined to fulfill the vision of our strategic planners led by Ken Stinson. They encouraged us to leverage our unique position in the community to serve as a convener, collaborator and information aggregator. To step into these roles, we examined our community's most pressing challenges from a broad lens and began to bring the business and nonprofit communities together to address them.

Thanks to the outpouring of support we received from each and every one of you, our efforts led to great success. We partnered with more than 50 nonprofit organizations to advance our [2025 community impact goals](#) in three areas – basic needs, education and financial stability. We were also honored to work with agencies and businesses on a number of collaborative projects, including a long-term plan to reduce food insecurity, a pilot program to meet the needs of 16 to 24-year olds who are disconnected from school or work, and much more. Please see our partners page for more information on these projects and the organizations who made them possible.

Through these [partnerships](#), we made great progress within the community and changed thousands of lives. In fact, due to the efficiency of our partners, we expect to far surpass our 2025 goals in the years ahead.

Your investment in United Way is changing lives for thousands of people in our community. To see a video on how your investment impacts those who need it, visit our [Community Stories page](#).



Thank you to our 2017 Campaign Chairs



Steve and Sue Seline

We would like to extend our sincere thanks to Steve and Sue Seline for their leadership throughout the 2017 campaign year. Steve is the president and chief executive of Walnut Equity Partners, LLC, and Sue is a former reporter and anchor for WOWT-TV in Omaha. During the campaign, they led the campaign cabinet, a group of engaged community volunteers. Their efforts made a tremendous impact on our community and the lives of our most vulnerable neighbors.

2017 Tocqueville Chairs



Scott Moore and Danene Tushar

We are grateful to Scott Moore and Danene Tushar for serving as our Tocqueville Chairs throughout the 2017 campaign year. Thanks to their dedication and support, more than 250 Tocqueville donors participated in the campaign.

What's Next?

With more than 100,000 people living in poverty in the Omaha-Council Bluffs metro, United Way of the Midlands' mission to impact poverty in our community remains as vital as ever. To help our most vulnerable neighbors achieve their full potential, we will continue to invest donor dollars into the metro's most effective basic needs, education and financial stability programs.

Because we are always striving to maximize our impact in the community, we are incorporating a number of best practices into our investment process over the next two-year funding cycle. One such practice, the implementation of the Results Based Accountability framework, will help us collect more detailed data around program outcomes. We will be able to evaluate the quality of our impact as well as the quantity, giving us better insight into the effectiveness of our investment portfolio.

As we move forward, we are also prioritizing partnerships with programs that utilize a two-generational approach. These programs will put whole families on the path to stability and economic security by providing support for children and their parents to make progress together.

Finally, we are putting an even larger focus on community partnerships between nonprofit agencies, as well as on partnerships around our 2-1-1 Helpline, the metro area "Campaign for Grade-Level Reading" and our Opportunity Youth initiative. Turn to page 10 to learn more about our partnerships.

As we work with our partners to make an impact and drive efficiencies, we will continue to hold ourselves accountable as well. Last year, we were proud to have our efficiency recognized nationally – we were ranked 10th for campaign performance and 17th for financial and operational efficiency out of approximately 1,200 United Ways. This year, we'll continue to emphasize efficiency by investing more than 91 cents out of every donated dollar directly into our community.

So, as you can see, the year ahead is a hopeful one! As more and more people combine their efforts with United Way and invest in our community, we will continue to make progress toward our goals and change thousands of lives for the better right here in the Omaha-Council Bluffs metro.



United Way of the Midlands United Way

2025 GOAL

By 2025, over 2,000,000 services addressing basic needs will be delivered to our neighbors living in or at risk of poverty.

The infographic features an orange background. At the bottom, there is an illustration of a house, a carrot, and a stethoscope.



United Way of the Midlands United Way

2025 GOAL

By 2025, 8,000 9th graders in the Omaha-Council Bluffs community will be on track to succeed in school and life.

The infographic features a blue background. At the bottom, there is an illustration of a school building, a laptop, a smartphone, and a bar chart.



United Way of the Midlands United Way

2025 GOAL

By 2025, 565,000 residents will be financially stable so they can support themselves and their families.

The infographic features a red background. At the bottom, there is an illustration of a briefcase, a document, and two houses.

Raising the funds to invest back into the Omaha-Council Bluffs metro is also an impressive community effort. Our current campaign season is off to a great start.

2018 Campaign Leadership



Campaign Chairs: Tim and Terri Burke

We welcome Tim and Terri Burke as they lead the 2018 campaign. Their dedication and passion for our community has already inspired countless individuals and businesses to give back to our community. Tim has worked in the utility industry for more than 36 years. He currently serves the president and CEO of Omaha Public Power District and sits on the Board of Directors for the Omaha Chamber and United Way of the Midlands. Terri is an active community volunteer, volunteering at St. Mary's Elementary School, St. Matthew Catholic School, Gross Catholic High School, Kellom Elementary School with Partnership for Kids and the afterschool program at Mercy Housing Crestview. She has also volunteered in pet therapy and as a NICU baby rocker at Children's Hospital. Tim and Terri are currently working with 13 cabinet members to reach our 2018 fundraising goal.

Tocqueville Chairs

We would like to thank Matt DeBoer, Jon Doyle, Fred Hunzeker and Scott McCollister for joining our first ever Tocqueville Committee. Their thoughtful leadership has motivated countless community members to give at the leadership level.



Matt DeBoer



Jon Doyle



Fred Hunzeker



Scott McCollister



2018-2019 Board of Directors

Front Row (left to right):

Karen Hawkins, Tocqueville Women's Steering Committee and Women United Board Liaison; **Dr. Mary Hawkins**, President, Bellevue University; **Corey Shaw**, Executive Vice President, Chief Operating Officer, Nebraska Medicine; **Gail DeBoer**, President and CEO, Cobalt Credit Union; **Dan Waters**, Partner, Lamson, Dugan & Murray LLP (UWM Board Secretary); **Dr. Linda Chase**, Senior Vice President, Chief Nursing Officer, CHI Health

Middle Row (left to right):

Rafael Dorador, Vice President Aftermarket – Central Region, Cummins Sales and Service; **Steve Kaniewski**, President and CEO, Valmont Industries; **Bob Gunia**, Senior Vice President, Public Affairs Group; **Michael Whetstine**, Vice President and Controller, Kiewit Corporation; **Shawna Forsberg**, President and CEO, United Way of the Midlands; **Jerry Crouse**, Vice Chairman and CEO, Tenaska, Inc. (UWM Board Chair); **Susan Courtney**, Executive Vice President, Operations, Blue Cross Blue Shield of Nebraska; **Nate Dodge**, President, NP Dodge Company; **Dr. Mark Foxall**, Retired, Director, Douglas County Department of Corrections, Professor, University of Nebraska – Omaha

Back Row (left to right):

Clark Ponthier, Senior Vice President, Supply Chain and Continuous Improvement, Union Pacific Railroad; **Cameron Burt**, Vice President, Holmes Murphy; **Dr. Richard Azizkhan**, President and CEO, Children's Hospital and Medical Center; **Tim Burke**, President and CEO, Omaha Public Power District; **Mickey Anderson**, President, Baxter Auto Group; **Othello Meadows, III**, Executive Director, Seventy Five North Revitalization Corporation; and **Joel Falk**, Regional President, UMB Bank (UWM Board Treasurer)



2017-2018 Financial Report

Fiscal Year 2017-2018

REVENUES

\$ in Millions

Campaign Contributions	\$17.2
Other Revenue Items (Grants, Fees, Investments, etc.)	<u>\$ 1.5</u>
Gross Revenues	\$ 18.7
Less Allowance for Collection Loss	\$ (0.5)
Total Net Revenues	\$18.2

DISBURSEMENTS

Funding to Community Programs and Services	(\$12.2)
Community Services Provided by UWM	(\$ 4.1)
Fundraising and Operating Expenses	(\$ 1.9)
Total UWM Disbursements	(\$18.2)

EFFICIENCY RATIO:

90.8 cents of every donor dollar invested into the community.*

* Calculated overhead rate, per generally accepted accounting principles is 10.4%. The difference between this and the 91 cents of donor dollars going to the community relates to nonprofit accounting requirements to include such things as in-kind gifts in both revenue and expense. Neither of these adds to or detracts from community investment, and when they cancel each other out from the calculation, the 91 cents reflects the true donor impact.

United Way of the Midlands' audited financial statements and Form 990 will be available at UnitedWayMidlands.org/Financials once filed.

TOP 100 Company Campaigns

It is remarkable how the Omaha-Council Bluffs community rallies together each year during campaign season. Here are the top 100 company campaigns from this past fiscal year but we thank all 700 companies who generously gave.



Community Partnerships

Throughout our previous funding cycle, we were honored to work with agencies and businesses on a number of collaborative projects that benefited people living in poverty. As we move forward, we will continue to develop and strengthen these partnerships because we know that we are stronger together.



Omaha Henry Doorly Zoo and Aquarium Partners with UWM and 2-1-1 Helpline (Oct 2018)

Omaha's Henry Doorly Zoo and Aquarium partnered with UWM and the 2-1-1 Helpline to provide free memberships to eligible families through the "Bring Your Family to the Zoo" program. [Click here to learn more.](#)



BCBSNE Hosts Technicolor Run to Benefit UWM (Sept 2018)

Blue Cross and Blue Shield of Nebraska hosted their fifth annual Technicolor Walk/Run to benefit UWM. The fun-filled, family event brought Aksarben Village businesses and residents together to support the community. [Click here to learn more.](#)



UWM Receives Grant from Wells Fargo (May 2018)

Wells Fargo generously awarded an \$86,000 grant to UWM to support healthy food and hunger relief programs in the Omaha-Council Bluffs metro area. [Click here to learn more.](#)



Lincoln Financial Group Supports UWM's Partnership with Seimer Institute and Family Housing Advisory Services (May 2018)

Lincoln Financial Group generously awarded an \$85,000 grant to UWM to support its partnership with the Siemer Institute and Family Housing Services. This collaborative partnership addresses the needs of families on the edge of homelessness. [Click here to learn more.](#)



Omaha Police Department Partners with 2-1-1 Helpline (May 2018)

The UWM 2-1-1 Helpline is partnering with the Omaha Police Department to spread awareness of the helpline and increase access for those in need. [Click here to learn more.](#)



UWM Receives Grant from USDA (Nov 2017)

The United States Department of Agriculture, National Institute of Food and Agriculture awarded UWM a Community Food Planning grant in the amount of \$34,001. Funds were used to develop a collaborative plan that will ensure community members have reliable access to affordable and nutritious food. [Click here to learn more.](#)



UWM Receives Three-Year Grant from Cox Communications (July 2017)

Cox Communications generously awarded \$60,000 to UWM to support operations at the 2-1-1 Helpline. Click [here](#) to learn more.



UWM and Partners Support Opportunity Youth (June 2017)

Under UWM's leadership, more than 40 agencies came together to determine how they can best meet the needs of Opportunity Youth, 16-24-year-olds who are disconnected from school or work. Together, these partners created the Hub, a pilot program housed at the Nebraska Children Families Foundation that helps Opportunity Youth navigate resources and supports in our community. Click [here](#) to learn more.



Omaha Federation of Labor Partners with UWM (ongoing)

Omaha Federation of Labor has a strong partnership with UWM to promote skilled trade careers so that people can become independent.



Community Health Charities of Nebraska Partners with UWM (ongoing)

UWM partners with Communities Health Charities of Nebraska (CHC) to provide funding to CHC member charities. These charities support innovative research that improves lives and offer critical client services, education and prevention programs within our community. Click [here](#) to learn more.



Local Organizations Support 2-1-1 Helpline Outreach (ongoing)

To promote 2-1-1 in our community and further connect to members, the helpline partners with local organizations and programs including American Red Cross, Commonfund, Douglas County Emergency Management Services, Goodfellows and Nebraska Public Power District's Pennies for Power. Click [here](#) to learn more.



UWM Joins Campaign for Grade-Level Reading

Under the leadership of the Metropolitan Omaha Educational Consortium and the Learning Community, UWM will support the Campaign by aligning resources and existing efforts to address three challenges that can keep our young children, especially those living in poverty, from learning to read proficiently. Click [here](#) to learn more.

Corporate Campaign Recognition Awards

Approximately 700 organizations generously dedicated their time and financial support to United Way of the Midlands during the 2017 campaign, empowering us to create lasting change within the community. To celebrate their efforts, we decided to add a recognition component to our 2018 Annual Meeting.

While we wish we could recognize the contributions of every partner, we plan to present awards to those companies who have gone above and beyond to support UWM. We believe the following awards will capture the unique and varied nature of our partnerships: Volunteer Organization of the Year, New Business Partner of the Year and Corporate Partners of the Year. Because we know small organizations can still make a big impact, the Corporate Partner of the Year award will be presented to companies within four different employee size categories.

Our intent is to award a single winner in each category, but we wanted to share the top contenders for each award with you as well.

Volunteer Organization of the Year

This award will be presented to a company that consistently strives to improve our community through volunteerism. Selection was based on the percentage of total employees who participated in UWM volunteer events during the 2017 campaign year.



Sojern has generously supported UWM through volunteerism for the last two years. During the 2017 campaign year, 970 Sojern employees participated in UWM volunteer events.

456 of these employees participated in Sojern's customized volunteer project, during which they prepared and packaged reading kits for UWM's Day of Action. Sojern served as the sponsor for Day of Action, donating \$10,000 to cover the cost of materials for the event. Sojern employees also donated 452 books to include in the reading kits. Additionally, 30 volunteers delivered the kits and read to local kids on Day of Action and 32 participated in Day of Caring. Both are UWM signature volunteer events.

Sojern has specialized in traveler path-to-purchase data for over a decade, delivering more than \$13B in direct bookings for clients to date by activating multi-channel branding and performance solutions.

Runners-up:

Blue Cross and Blue Shield of Nebraska, Deloitte (tie) and First National Bank (tie)

New Business Partner of the Year

This award will be presented to a business that recently chose to invest in our community through United Way of the Midlands. Businesses that did not donate to UWM in the previous campaign year were eligible for consideration. Selection criteria included dollars pledged, employee participation percentage and per capita giving.



Nebraska Total Care held an engaging first-year campaign, with a remarkable 95 percent employee base participation. Together, they raised an impressive sum for UWM and our community.

Nebraska Total Care is a Managed Care Organization and subsidiary of Centene Corporation (Centene). The organization delivers quality healthcare in the state of Nebraska through local, regional and community-based resources.

Runners-up:

Leo A. Daly and Baxter Auto

Corporate Partner of the Year

This award will be presented to businesses in four different employee size ranges that have shown an exceptional level of dedication to United Way of Midlands and the community through their corporate campaign fundraising efforts. To be eligible, the organization's total gift must exceed \$3,000. Selection criteria included year-over-year growth, participation rate and per capita giving.

Corporate Partner of the Year Under 100 Employees



Columbia Insurance Group has been a dedicated UWM partner for 20 years. During the 2017 campaign year, they exceeded the amount raised through their 2016 campaign by nearly 68 percent. Ninety-two percent of their employee base participated.

Columbia Insurance Group is a mutual insurance carrier that strives to build enduring relationships with their customers by providing exceptional service and value.

Runners-up:

Holmes Murphy, Chastain Insurance Agency and Union Bank and Trust (tie)

Corporate Partner of the Year Under 100-199 Employees



(Tied)

ACCESSbank has been a proud partner of UWM since 2009. During the 2017 campaign year, they exceeded the amount raised through their 2016 campaign by nearly 55 percent. Ninety-one percent of their employee base participated.

ACCESSbank is a locally owned Omaha bank that specializes in consumer & commercial banking.

The Harry A. Koch Co. has partnered with UWM for more than 10 years. During the 2017 campaign year, they exceeded the amount raised through their 2016 campaign by 39 percent. Eighty-one percent of their employee base participated.

The Harry A. Koch Co. is an independent insurance broker providing a full range of risk management and insurance products and services to clients locally, regionally and globally.

Runners-up:

Fraser Stryker and AG Processing

Corporate Partner of the Year Under 200-800 Employees



Security National Bank has generously donated to the community through UWM since 2008. During the 2017 campaign year, they exceeded the amount raised through their 2016 campaign by more than 10 percent. Ninety-four percent of their employee base participated.

Security National Bank has called the Greater Omaha area home for over half a century. They take a comprehensive approach to their customers' banking needs, backed by personal service from established professionals.

Runners-up:

Tenaska and Wells Fargo

Corporate Partner of the Year Under 801+ Employees



Lozier has generously supported UWM since 2009. During the 2017 campaign year, they exceeded the amount raised through their 2016 campaign by almost five percent. Forty-three percent of their employee base participated.

Headquartered in Omaha with facilities across the U.S., Lozier Corporation is the leading manufacturer of store fixtures. Retailers around the world have relied on their quality products and service for over 60 years.

Runners-up:

First National Bank and UPS (tied)

2018 Citizens of the Year



There are so many caring and committed community members in our metro. With advice and counsel from the previous Citizen of the Year recipients, United Way of the Midlands is proud to name a special couple for this year's recognition: **Paul and Annette Smith.**

Paul Smith is currently a member of the Board of Stakeholders of Tenaska, one of the largest private, independent energy companies in the United States. Throughout his 25-year tenure with the company, Mr. Smith served in a variety of leadership roles, including Vice-Chairman. Mr. Smith earned a bachelor's degree in mechanical engineering from Iowa State University and a M.B.A. from the University of Nebraska at Omaha. He currently serves as the Chairman of the Board of the Joslyn Art Museum. He is also past Chairman of the boards of Film Streams, Omaha Conservatory of Music and the Bemis Center for Contemporary Arts. Mr. Smith also serves or has served as either a member of the board of directors or committees of Opera Omaha, Omaha Community Foundation, United States Artists and the Whitney Museum National Committee.

Annette Smith earned a bachelor's degree in psychology and business administration from Dana College. She also holds a degree in architecture from the University of Nebraska. Mrs. Smith currently serves as the President of the Board of Directors of Boys and Girls Club of the Midlands. She is also past Chair of the Women's Leadership Council for the United Way of the Midlands. She serves or has served on the board of directors or committees of the College of Saint Mary, OpenSky Policy Institute, Kent Bellows Studio and Center for Visual Arts, Nebraska Academic Decathlon Foundation, Whitney National Committee and Omaha Area Youth Orchestra.

Together, Mr. and Mrs. Smith work to promote the arts and support youth development in the greater Omaha community. Also ardent supporters of the humanities, the Smiths were recipients of the Governor's 2015 Sower Award. They founded the Omaha Conservatory of Music, which is known nationally for its program String Sprouts, and Impact Circle – Big Brothers Big Sisters of the Midlands. The Smiths have also been instrumental in the origination of the annual events Louder than a Bomb Youth Poetry Festival and the Great Plains Theatre Conference. In addition, the Smiths are lead investors in the Capitol District, a mixed-use development located at 10th Street and Capitol Ave. in Omaha. They also lead development and investment in Millwork Commons, a mixed-use development at 12th and Nicholas streets.

The Smiths are most proud of their three children Louis, Charlie and Greg and together they enjoy art, architecture, traveling and many outdoor activities.

[Click Here, to see their "Citizens of the Year video."](#)

“Giving From the Heart” Award



“Giving from the Heart” Award winners include Cindy Bay, Marion Anderson and Diny Landen.

About the Award

“No matter what you have to give, give from the heart or from the soul.” – Suzanne Scott

In her special way, Sue provided leadership for many other women who aspire to make a positive impact on our neighbors’ lives and on the community we call home. It is for this reason we have created an award in her name, the United Way of the Midlands’ Suzanne Scott “Giving from the Heart” Award.

This honor is presented to a woman in the Omaha-Council Bluffs metropolitan area who demonstrates the thoughtful and philanthropic qualities evident in the late Suzanne Scott. The criteria used to select a recipient includes these three things:

Care: Represents Sue’s ability to identify a need and put her whole heart into helping to find a solution.

Inspire: Comes from Sue’s ability to motivate others to give back to our community.

Act: This is something Sue demonstrated countless times in her life. It came from her never-ending commitment to United Way and her community through volunteering her time, sharing her talent, and generously donating her resources to get things done.

The United Way of the Midlands Women’s Tocqueville Initiative presented the 2018 Suzanne Scott “Giving from the Heart” Award to **Diane (Diny) Nolan Landen** on Thursday, September 6 during their bi-annual luncheon graciously hosted by Cindy Bay at her home.

The Suzanne Scott “Giving from the Heart” Award was created to honor Suzanne Scott. Every two years, the award is presented to a woman in the Omaha-Council Bluffs metropolitan area who demonstrates the thoughtful and philanthropic qualities evident in Scott – her drive to care, inspire and act.

Landen grew up in El Dorado, Arkansas. After graduating from Southern Methodist University (SMU) with a Bachelor’s degree in Political Science and Bachelor’s and Master’s degrees in Business Administration, Landen moved to Omaha with her husband, Jim. She founded KKCD radio station and served as the co-owner of a publishing company and local magazine in Omaha. She is currently active in board and management roles in companies involved in radio broadcasting and natural resources.

Landen is distinguished by her involvement in many charitable organizations and philanthropic causes, including United Way of the Midlands, Project Harmony, Joslyn Art Museum, SMU’s Dedman College Executive Committee, Girls Inc., American Red Cross and the Vision Committee for the Lauritzen Gardens Antique Show. Within United Way of the Midlands, Landen has chaired the Board of Directors, the Planning and Allocation Committee and the first Tocqueville Women’s Initiative Advisory Committee.

Members of the UWM Women’s Tocqueville Initiative present the Suzanne Scott “Giving from the Heart” Award during their bi-annual luncheon. The Women’s Tocqueville Initiative is comprised of women who donate \$10,000 or more to the United Way of the Midlands campaign.

Previous award winners include Marian Andersen, 2014 and Cindy Bay, 2016.



Alexis de Tocqueville Society

For nearly 95 years, United Way donors have provided critical funding to help our neighbors meet their most basic of needs including access to healthy food, medical care, safe and affordable housing and academic supports, with the ultimate goal of helping families achieve long-term financial stability. The dedicated and passionate leaders of the Tocqueville Society champion this important work, knowing that we all have a stake in the strengthening of our community.

As Tocqueville Society Members, you help set the standard for giving in the Omaha- Council Bluffs metro and are at the forefront of creating positive change while tackling our community's toughest issues. Membership is open to individuals and couples who contribute \$10,000 or more annually.

By being a part of this remarkable group, you have an opportunity to make a lasting difference that will impact the generations of tomorrow.

RECOGNITION LEVELS

La Table Ronde des Millions de Dollars:

Members who have given \$1,000,000 or more cumulatively throughout their lifetime.

Ordre de Prospérité: \$750,000 to \$999,999

Ordre de Connaissance: \$500,000 to \$749,999

Ordre d'Indépendance: \$250,000 to \$499,999

o * – Deceased

o ^ – Charter Members

La Table Ronde des Millions de Dollars:

Robert B. Daugherty Foundation
John and Carmen Gottschalk
Peter Kiewit Foundation
Peter Kiewit Endowment Fund
Suzanne* and Walter Scott ^
Ann and Ken Stinson
3 Anonymous Donors

Ordre d'Indépendance:

Holland Foundation

La Société Nationale:

Weitz Family Foundation
1 Anonymous Donor

Ordre d'Egalité:

Henry A. Davis
Mammel Family Foundation
Sue and Steve Seline
Marsha R. and Mark R. Wright

Ordre de Liberté:

Jack and Judy Baker
Mogens and Cindy Bay
Julie and Lance Fritz
Howard L. and Rhonda A. Hawks

La Société Nationale: \$100,000 to \$249,000

Ordre de Fraternité: \$75,000 to \$99,999

Ordre d'Egalité: \$50,000 to \$74,999

Ordre de Liberté: \$25,000 to \$49,999

Ordre d'Altruiste: \$20,000 to \$24,999

Ordre de Classique: \$15,000 to \$19,999

Membres de la Société: \$10,000 to \$14,999

The Heider Family Foundation
Matt and Donna Johnson
Jack and Steph Koraleski
Mr. and Mrs. Bruce R. Lauritzen
Susan and Michael Lebens Family
Dr. Amy M. Haddad and Mr. Steven S. Martin
William and Ruth Scott Family Foundation
Betiana and Todd Simon
Annette L. and Paul G. Smith
Robert H. Storz Foundation
Carol and Mike Whetstone
Joan Gibson and Donald Wurster
One Anonymous Donor

Ordre d'Altruiste:

Andrea and Trevor Barton
Jerry and Ann Crouse
Jim and Anne Greisch
Gilbert M. and Martha H. Hitchcock Foundation
Robert and Addie Hollingsworth
Gail and Harry Koch
Ronald Lewer
Dan and Shirley Neary
Mr. and Mrs. Daniel K. O'Neill
Ms. Terri Schrage
Jim and Kathy Simpson
Dottie and Stanley Truhlsen

Ordre de Classique:

Dan and Esther Brabec
Tim and Linda Daugherty
Diane Duren and Drew Collier
Mr. and Mrs. Drew Fossum
Ramona and Deryl Hamann
Daniel Hamann
Lori and Paul Hogan
Mark and Alice Jaksich
Julie and Eric Keen
Kirk L. Kellner
Gwen A. Teeple and E. Lyle Kinley, Jr.
Patty and C.L. Landen
Diny and Jim Landen
Nancy A. and Michael R. McCarthy
Rondalyn and Robert Mitchell
Linda and Larry Pearson
Mr. Robert A. Reed
Stacie and Rob Reed
Colleen and Scott Schmidt
Fred and Eve Simon Charitable Foundation
Ellen and Richard Slosburg
Martha and David Slosburg
Mr. and Mrs. Keith and Deb Spackler
Jack and Polly Struyk
Frederick Wooldridge and Julieann Wooldridge

Membres de la Société:

Len and Daun Adams
Mr. and Mrs. Richard and Maureen Anderl
Marian Andersen^
Mr. and Mrs. David Andersen
Tal and Mary Joy Anderson Family
Steve and Sheri Andrews
John Arp
Richard G. Azizkhan, M.D.
Jean C. Bell
Jeff and Kate Betsworth
Ken and Annie Bird
Paula and James Blackledge
Irv and Susie Blumkin
Chris and Ron Blumkin
Katrina and Steve Booker
Maureen and Nicholas Borman
Danielle and Dana Bradford
Matt and Linda Brandl
Gerald and Joanne Bray
Mr. and Mrs. Edson L. Bridges III
David and Maggie Brown
Stephen and Anne Bruckner
Timothy and Terri Burke
Cynthia and Eric Butler
Michael and Elizabeth Cassling
Tony and Nancy Chacon
Linda and Steve Chase
Larry and Diane Cochran

Claire and Tim Connolly
Mr. and Mrs. Richard Cornish
Pat and Susan Courtney
Greg and Nancy Crawford
C.C. and Mabel Criss Memorial Foundation
Tim and Mary Crockett
Robert and Susi Dalrymple
Daniel DeBehnke
John and Mrs. Gail DeBoer
Matthew DeBoer
Pat and Michele Dees
Aimee and Trent Demulling
David and Carolyn Diamond
Mr. and Mrs. N. P. Dodge, Jr.
Meg and Nate Dodge
Michael and Jan Doiel
Mark Dolsky
Mr. and Mrs. Rafael Dorador
Jon P. and Kay M. Doyle
Patrick and Melissa Duffy
Rae and Bill Dyer
Mike and Debbie Earleywine
Quint and Alison English
John and Kathy Estes
Rhonda and Clayton Ferguson
Mr. and Mrs. William A. Fitzgerald*
Grant and Shawna Forsberg
Mike and Shelley Foutch
Kathy and Gary Gates
Carol and Michael Geary
Kathy and Bill Gerber
Danielle and Jeff Gordman
Steve and Barb Grandfield
Thomas Haley
Jennifer Hamann and Kippy King
Julie Hamann
Traci and Tim Harrison, CFP, MSFS, CPWA
Timothy D. and Debra J. Hart
Karen and Kim Hawkins
Marianne and Fred Hawkins, Jr.
Chris and Kayla Hawkins
Greg Heckman and Family
Kimberly and Jason Hess
Doug and Kathy Hiemstra
Heidi Higgason & Brad Negrete
Scott and Terri Hill
Dean and Lisa Hollis
Richard and Susan Hrabchak
Fred Hunzeker
Michael and Lauren Hupp
Wes and Sherrye Hutcherson
Beth Jensen, Kutak Rock LLP
Mr. and Mrs. Stephen Kaniewski
David and Kris Karnes
Bill Kernen
Dan and Kari Kinsella

Kari Kirchhoefer
 Rob and Julie Knight
 Kent Knudsen
 Sharon and Howard Kooper
 John and Wende Kotouc
 Jackie and Terry Kroeger Family
 Mary S. Landen*
 Mr. and Mrs. C. Rex and Janet Latta
 Clark and Emily Lauritzen
 Tom and Emily Lischer
 Tina and Dan Lonergan
 Mary and Rodrigo Lopez
 Paul and Julie Maass
 Dale Mackel
 Bill and Nicki Manhart
 Rod and Betsy Markin
 Trina and Scott McCollister
 Timothy and Joan McGill
 Todd and Barb McQueen
 Kathy and Cal Meyer
 Galen and Tiffany Meysenburg
 Moglia Family Foundation – Joe Moglia, Trustee
 Scott Moore and Danene Tushar
 Michael and Wendy Moran
 Anne and John Nelson
 Senator and Mrs. E. Benjamin Nelson
 The Noddle Family Charitable Foundation
 Kathy and Joe O'Connor
 Jerry O'Flanagan
 Charles L O'Reilly Jr.
 The Robert E. Owen Family
 Jill and Jon Panzer
 Cassandra and Gary Pietrok
 Duane and Kathleen Polodna
 Ron and Teri Quinn
 Ginny and Marty Reagan
 John and Lynda Reed
 Robert and Jennifer Richardson
 Kenny and April Rocker
 Amy & Mike Ryan
 Kelly and Todd Rynaski
 Tom and Deb Sanders
 Barb and Ron Schaefer
 Joann Schaefer and Mr. Phil Haines
 Aaron and Kathryn Schapper
 Amy and Jeff Schmid
 Stacy A. Scholtz
 Beth and Harley Schrager
 Toby and Molly Schropp
 John A. and Dianne M. Scott
 Karen and Cameron Scott
 Mr. and Mrs. David* and Heidi Seeley
 Jeff and Becky Sharp
 Kristi and Cory Shaw
 Mr. and Mrs. Alan Simon
 Kenneth and Ellen Stoll

Janet Strauss^
 Sue and Lynden Tennison
 Scot and Ellen Thompson
 Brad and Ann Thrasher
 Tracy and Matt Tondl
 Christopher J. Tonniges
 Edward J. Vidlak
 Mike and Deb Wade
 Julie and Jim Wajda
 Kyle Wallor
 Tricia and Mark Weber
 Katie Weitz
 Joni Wheeler
 Kelvin and Beth Whited
 Douglas S. and Jane E. Wignall
 Clint and Christine Williams
 Tim and Beth Wilson
 The Omnium Foundation
 Pam and Rick Witt
 Nancy and Philip Wolf
 Brian and Tara Woolfolk
 Mr. and Mrs. Michael B. Yanney^

Step-Ups Tocqueville Members: Members who pledge to increase their contributions to Tocqueville Society level over a three-year period.

David and Pamela Duzik
 Matt and Teri Mercer
 David J. Moline



Bridgebuilders Society

Platinum: \$9,999 to \$7,500

Gold: \$7,499 to \$5,000

Silver: \$4,999 to \$2,500

Bronze: \$2,499 to \$1,000

Established in 1989, the Bridgebuilders Society recognizes individuals and families making annual gifts of \$1,000 to \$9,999. Such gifts represent a new level of community participation and involvement which helps bridge the gap between the increasing needs in our community and the services available to meet them. There are more than 2,900 local Bridgebuilders strengthening the local community through their support of United Way of the Midlands.

Platinum

Ken and Kim Lawonn
Christopher and Michelle Leitner
Dr. Edward and Sally Malashock Δ
Sherif and Mart Sedky
Lisa A. Weber

Gold

Stephen and Joy Abels
Ane Abraham
Michael and Kim Banat
Anne and Nick Baxter
Mr. and Mrs. John and Linda Beacom
Brick Bennington and Amy Stogdill-Bennington
Denise and Bradley Britigan
Melissa and Jim Crawford
David and Carol Dickey
Kevin R. and Lanel J. Fenster
Mr. and Mrs. Steven Franz
Don Geier
Eric Grundke
Miranda B. Harrell
Mr. and Mrs. Terry Helpfrey
Edward H. Hengemuehler
Mark and Marsha Hewett
Eric M. Johnson
Maureen and Richard Kizer
Mr. and Mrs. John E. Kizer
Robyn and L. James Kortan
Tim and Kari Kudron
Jeff and Michelle Lebens
David and Sarah Miles
Royce and Susan Ramsay
Jeff Sims
L. B. "Red" and Jann Thomas
Royce K. Wood
Barbara True

7 anonymous donors

Silver

Daniel and Leigh Anne Alm
Jeni Alm
David and Melissa Anderson
Kathryn M. Anderson
Daniel Archuleta
Ann and Brad Ashford
Ralph and Joan Batenhorst
Susan Beaton
Martin and Jane Beerman
Chad and Brandy Bell
Mary Heng-Braun and Robert Braun, Jr.
Adam and Ashli Brehm
Pat and Tami Brookhouser
Michael and Melissa Brown
John and Kim Buckley
Dr. Mary E. and Mr. Patrick J. Burns
Kevin E. Burr
Mr. Cameron Burt
Alisa and Curtis Caldwell
John and Renee Campbell
Tammy and Darren Carlson
Teresa Carnazzo
Susan L. Chidester
Phillip C. and Roberta J. Christensen
Stefanie and Erik Christensen
Kim and Wayne Clure
Kelly and Russell Collins
Juli Comstock
Stephanie and David Cota
Jill Coyne
Judy Crosby
Gary and Peg Crouch
Thomas and Beth Culross
Mr. and Mrs. Kevin and Ellen Dasher
Howard and Stephanie Daubert
John and Alice DeBoer
Joyce Dixon
Mr. and Mrs. Joshua and Judith Dixon

Mendi Dohse
 Lori J. Druse
 Kim F. Duncan
 Mike and LaVonne Dunetts
 Ronald Dy
 Rick and Lori Elliott
 Gary Elliston
 Grant W. Empson
 Dr. Charles and Carol Enke
 Rowdy, Jan, Maren and Sage Evans
 Kenneth D. Feaster
 Jessica Fink
 Joseph Finnegan
 Tate and Denise Fitzgerald
 Mr. and Mrs. Roger Fleury
 Mr. and Mrs. Timothy and Elizabeth Francis
 Bruce and Michelle Gerhardt
 The Gibbs Family
 Mr. and Mrs. David and Jennifer Gnuse
 Mr. and Mrs. Jeff and Traci Gohr
 Jean Grem
 Mark and Frances Grieb
 Joe and Dawn Grimshaw
 Nancy and Jerry Gruwell
 Bob and Theresa Gunia
 Ia and Jason Hagan
 David M. and Kathy Hahn
 Lee and Jennifer Handke
 Mary and James Hawkins
 James Haynes
 Wes C. Hehn
 Mr. and Mrs. Bradley and Courtney Heisey
 Dee and Dan Henry
 Susan A. Henry
 Bradley and Christine Hinton
 C. Jodlowski
 Larissa L Johnson
 Mitzi Johnson
 Mr. and Mrs. David Johnson
 Michael Joiner and Nancy Bucknell
 Mary and David Jones
 Jeff and Dawn Judkins
 Gloria and Howard Kaslow*
 Thomas and Stephanie Kastrup
 Mary Ann Goodrich-Keep and Scott Keep
 Brandyn Keithley
 Dr. Lynn Kelley
 Brian and Lisa Ketcham
 David and Candi Kirkwood
 Chris and Gloria Kisicki
 Mr. and Mrs. Barry Klanderud
 George E. Kleine
 Debra Knust
 David Knutson
 Steve Konnath and Jane Campbell

David and Mary Kramer
 Catherine and Anthony Kuester
 Robin M. Lally, Ph.D.
 Cindy LaPole
 Steve Likes
 Ruben Lopez
 Mr. and Mrs. Carl and Fany Macchietto
 Dave and Jan Madsen
 J McCormick
 Don and Deann McMillen
 Mary and David Meier
 Anna Messersmith
 Mike and Brenda Michalski
 Ms. Anne Morgan
 Henry J. Morris, Jr.
 Brian Mosher
 Samantha and Mitchell Mosser
 Cindy and Don Munchrath
 Mr. and Mrs. Chris J. Murphy
 Joanna M. Murray
 John Nahas
 Katherine Novak
 Doug and Ann Happel
 Sean & Meghan O'Connell
 Stephen G. II and Lisa Olson
 Don and Rita Otis
 John Papproth and Susan Seaton
 Michael and Jennifer Parker
 Mr. and Mrs. Dennis and Jessica Pate
 Mitch and Lori Pirnie
 Dean Poppe
 Jerry and Elizabeth Powell
 Nancy Pridal
 Tim Prince
 Geoffrey Ramsey
 Mike Reilly
 Jennifer and Jim Richardson
 Mr. Craig Richardson
 Amber and Travis Rinehart
 Dr. Keith and Nancy Rohwer
 Ryan Sadler
 Mr. and Mrs. David Schettler
 Debra and Thomas Schneider
 Ryan and Rachel Schroer
 Greg and Dr. Pamela Schwalb
 Joanne Sebbby
 Stuart Severson
 Ed and Alice Shada
 Mr. and Mrs. Scott Simmelink
 Jon and Mindy Simon
 Michael Skoch
 Mr. and Mrs. Michael and Rebecca Smart
 Scott Smith
 Diane and Dwaine Sohnholz
 David and Shannon Spargo

Deb and John Steele
 Joanne M. Stewart
 Chris and Holly Stockman
 Maggie and James Summerfelt
 Mike Taylor
 Monte Tenkley
 Mary and Jim Theisen
 Myron and Barbara Toews
 Deaun K. Trayer
 Martin F. and Frances R. Traynor
 Gretchen Twohig
 Mr. and Mrs. Tony and Micki Urban
 John Ritland and Greta Vaught
 Frank and Bryn Venuto
 Ms. Jodi Wacker
 Sarah and Tom Waldman
 Mark and Karen Warner
 Brenda and Jim Watke
 Tam and Phil Webb
 Arnold Weitz
 Katrina Wells
 Jacqueline and Edward White
 Thomas D. Whitson
 Albert and Kim Whittaker
 Laurie Willburn
 Craig M. Wolf
 Tom and Gina Young
 Mr. and Mrs. Chris and Jennifer Zimmers

55 Anonymous Donors

Bronze

Mark & Jennifer Adams
 Michelle Aden
 Anthony Aguilera
 Venkata Kiran Ala
 Raj Alaparthi
 Craig Albers
 Mr. and Mrs. Troy Alberts
 Adrienne Alcoba
 Ms. Corey Aldy
 Mr. Gregory Andersen
 Stan and Angie Andersen
 Mr. Robert Andersen
 Rebecca Rae Anderson Mr. William Minier
 Roy Anderson
 Amy Andrews
 Thomas Andrews
 David and Brenda Anson
 Krissy Anzaldo
 Ms. Olivia Armenta
 Jeff Armstrong
 Mark and Kim Armstrong
 Kim Arnold
 Mr. Chris Arnold

Tonya Arnold-Tornquist and Brian Tornquist
 Dwayne Asche
 Michael Ash
 Ms. Lisa Ashby
 Mr. Stephen C. Ashmore
 Sara M. Athen
 Kevin G. Atkins
 Mr. John B. Atkins
 Linda Aughenbaugh
 Stacy and Nicki Auman
 Ms. April A. Ayres
 Amy S Bailey
 Larry and Bonnie Bailey
 Michael Bailey
 Paul H. Bails
 Gary and Kim Baker
 Russ Baker
 Steven and Christine Baker
 Brice and Allyson Ballard
 Mark A. Baratta
 Peter Barley
 Jennie Bartholomew
 Ms. Jean Bartman
 S. Bartruff
 Jeffrey R. Barwick
 Mrs. Deborah L. Bass
 Michael Bassett
 Joshua C. Bates
 Robert and Terroll Batt
 Jim and Lana Bayless
 Michael Beatie
 Teresa A. Beaufait
 Rex Beck and Susan Grant
 Stephanie Kastrup
 Julie Behrends
 Mr. Scott M. Behrens
 Nancy and George Behringer
 Shirley Beier
 Bryan Beighley
 Roxanne and Dave Bekaert
 Megan Belcher
 Ms. Ruth Ann Belding
 Dave Bellairs
 Mark and Jacqueline Bendon
 Megan Benoit
 Dale Berg
 Thomas W. and Ann M. Berger
 Alison Berger-Lavine
 Eric N. Bergquist Marcie H. Bergquist
 John and Karen Bever
 Bradley and Leslie Biehl
 Dennis and JoAnn Bierle
 Samuel M. Bierner, M.D.
 Brandon J. Biggs
 Tory M. Bishop

Marvin J. Bittner, M.D.
 Richard Blamble
 Ann Blanchard
 Isaac Blaske
 Mr. and Mrs. Blessing
 Jamie L. Block
 Mr. and Mrs. Scott Blocker
 Bryan and Emily Blodgett
 Robert and Sharon Bloechle
 Janet M. Blomstedt
 Ray Blomstedt
 Craig Bloodworth
 Brett Bock
 John G. Bogatz
 Dr. David L. Bolam
 Karma Bolls
 Dion Bonam
 Amy Bones
 Rik Bonness
 Tim Bormann
 Paul D. Borseth
 Lynn Borstelmann
 Karen S. Bortol
 Carl A. Bortol
 Chris and Amy Bouchard
 Mr. Glen A. Bouchard
 Elizabeth Mastee
 Mr. William E. Bowes
 Mr. Charles F. Bradburn
 Anne and Brian Branigan
 Justin and Leslie Brauer
 Debbi and Chris Breeling
 David Brehm and Jeene Hobbs
 Patrick H. Brennan
 William J. Brewer, Jr.
 Shirley J. Brick
 Al and Suzanne Brinkman
 Brian and Crystal Brislen
 Mark Bristol
 Mr. and Mrs. Devine-Bristol
 Cori Brock
 Mary M. Brockelsby
 Ms. Emily J. Broucker
 Greg and Kim Brokke
 Sue Brookhouser
 Chadwick and Jamie Brough
 Amy and Dwayne Brown
 Donna and Tony Brown
 Kathy Brown
 Tracey and Jonathan Brown
 Mr. Matthew J. Brown
 Mr. Robert J. Brown
 Brad and Lori Browne
 Brian and Kate Brownrigg
 Martha Bruckner

Linda L. Brue
 Helmut and Maggie Brugman
 James Brust
 Constance J Bryant
 Betty and Jim Gregware
 Mrs. Suzanne M. Buckner
 Mr. and Mrs. Buderus
 Ed Buglewicz
 Bull Hannelore
 Matthew and Rachel Burke
 George S. Burkoski, Jr.
 Jon W. Burlingham Sr.
 Steve Burnham
 Jim Burns
 Thomas Burns
 David Bushey
 Mr. Gerald M. Bushman, Jr.
 Marc and Jenny Butterfield
 Jim and Keely Byars
 Loree and Cecil Bykerk
 Ms. Sheri Cackin
 Danielle J. Calhoon
 Thad and Sharon Call
 Craig Callahan
 Lori J. Calub
 Jason Calvert
 Roshelle Campbell
 Joan Cannon and Gary Biggs
 Kimberly L. Cappellano
 Ranferi Carbajal-Solis
 Lisa and Glenn Carlson
 Norman and Bev Carlson
 Nan Carmody
 Jeff Carney
 Benjamin Carrick
 Mr. and Mrs. Bryan Carroll
 Mr. Richard E. Carroll
 Yvonne Carter
 John Caruso
 Carla Casper
 Cristina V. Castro-Matukewicz
 Kelly and Robyn Caverzagie
 Marc Ceja
 Rodney and Denise Cerny
 Angel Champion
 Regina Chapman
 Mike and Christine Charleston
 John A. Chekal
 Mr. and Mrs. Larry Cherney
 Michael Choiniere
 Cullen Chollett
 Nathan and Vicki Christ
 Andrew R. Christensen
 Colleen and Joel Christensen
 Kurt and Becky Christiansen

Chris Chung
 Joshua Norton and Adriana Cisneros Basulto
 Bryan and Joan Clark
 Drew and Bethany Clark
 Karen Clark
 Michelle J. and Ryan D. Clark
 Trisha Clary
 Diane and Dan Claussen
 Stephanie Cleary
 Nicole A. Cleveland
 Fred and Nora Clingman
 Vontarrius Cloy
 Ron Cochran
 Mr. Roger L. Coffey
 Mr. Rick Cogdill
 David and Marlene Cohen
 Dr. Samuel M. Cohen
 Dave Cole
 Mr. Keith M. Colligan
 Philip and Ronda Colling
 Douglas and Jane Collins
 Mr. Daniel Conell
 John Conley
 Royce Connerley
 Edmond G. Connolly
 Sean and Melanie Connolly
 Tim Connors
 Matthew Conrad
 Charlayne and Roger Cook
 Gary Cook
 Linda Cook
 Antoinette Cooper
 Mr. Gary L. Cooper
 Scott and Lisa Cooper
 Mr. and Mrs. Martie and Sara Cordaro
 Mary and Patrick Corrigan
 Tom and Amanda Corrigan
 Doug and Susan Couron
 Kathy and Larry Courtnage
 John and Tracy Cox
 Michael C. Cox
 Tom Cramer
 Mr. Douglas S. Craven
 Christopher Cross
 Ted Crouchley
 Janet and Tim Cuddigan
 Dennis Cullen
 Jen Cunningham
 Steve & Krysti Cunningham
 Ryan Curtis
 Tom and Jan Dahlk
 Mercedes Dahlquist
 Steven L. Daigle
 Jay and Melissa Daily
 Kevin Damme

Mr. Louis D'Angelo
 Kimberly Daniels
 Dwight and Jenny Dau ra
 Patty Dau
 Regent Hal and Mary Daub
 Jay Daubman
 Elisa and Drew Davies
 Kati Davis
 Mr. and Mrs. Dan and Julie Davis
 Sharon L. Davis
 Troy M. and Marta E. Davis
 Mr. Dave DeBoer
 Phil and Nancy Dehn
 Karla R. Delgado
 Laura and Jason Demman
 Ms. Trisha L. Derby
 Rod and Connie Determan
 Mike Devereaux
 Mr. and Mrs. Gary and Kimberly Devlin
 Tracy and Dolly DeWald
 Kathy Dewell
 Ms. Kathy A. Dewhurst
 Corey Dickmeyer
 Taylor and Ashley Dieckman
 Chris and Angie Dill
 Lori and Chad Dittberner
 Jeremy and Tracy Dixon Dixon
 Lance and Jennifer Dixon
 Mike and Sue Dobel
 Akeem Dodson
 Rod and Jan Doerr
 Mo and Mary Doghman
 James B. Dombrowski
 Norine Domenge
 Mr. Brian J. Donahoe
 Stu and Dari Dornan
 Bridget Dougherty
 Stephanie and Ryan Dougherty and Family
 Mary Jane Dowling
 Tony Dowling
 Rita M. Downey, R.N.
 Megan and Eric Downing
 Steve Dowse
 Mark and Aldona Doyle
 Brenda Draheim
 Jeff Drelicharz
 Julie D. Driftmier
 Kyle D. Droescher
 Mr. and Mrs. Aaron Dubberly
 Derong Duckett
 Walter and Tara Duda
 McKayla Duncan
 Robert and Kathleen Dunlay
 Scott and Jodi Durbin
 Mr. and Mrs. Bill and Janis Dwyer

Rose M. Earlywine
 Michael Eastman
 Mr. and Mrs. Mike and Stacy Ebeling
 Chris Edwards Contribution from Capital Lodge #3
 AF&AM
 Mark and Jackie Edwards
 Matthew and Alyssa Eibes
 Mr. Michael J. Elland
 Don Elliott
 Matthew Ellis
 Mr. Chris Ellis
 Ms. Mary D. Elofson
 Mr. David Elsesser
 Mark Engelbart
 Juli Engelsman
 Kathy English
 Corey R. Erdkamp
 Don Erikson
 Donna and Dave Erker
 Lynn Espeland
 Ann and Larry Etienne
 Aaron and Taina Evans
 Joseph A. Evans
 Robert and Judith Evans
 Jennifer Everett
 Mr. John W. Ewing Jr. & Dr. Viv L. Ewing List as Douglas
 County Treasurer
 Chris Fairchild
 Mr. and Mrs. Joel and Stacey Falk
 Ron Faltin
 John R. Farmer, Jr.
 Mr. and Mrs. James C. Farrell
 Donald and Lynne Fees
 Ms. Kathryn A. Fehrman
 Matthew L. Feik
 Shawn and Teresa Fernald
 Michael Fernen
 Mr. and Mrs. Nicholas Ferrara
 Kate Fiandt
 Percy Fields III
 Matt Finnegan
 Barbara J. Fitzmorris
 Susan Fleetwood
 Brian P. Flynn
 Jeff E. Focht
 William T. Foley
 Cate Folsom
 Joseph Folta
 Mike Fosdick
 Amy M. Fox
 Brian Fox
 Dr. Mark Foxall
 R. Brett Frankenberger
 Kelly M. Franklin
 Debra Frazier

Jay and Trina Frisbie
 Richard J. Fruge
 John Fuller
 Nichole Gacke
 Steven Gallaher
 Dr. David Gannon
 Jim Garbina
 Joseph Garcia
 Sarai Garcia
 David and Linda Gardels
 Greg and Rachel Garlock
 Marilyn and John Gaudreault
 Tom Gaughen
 Mr. Jeffrey F. Gaul
 Mr. and Mrs. William Geis
 Jon A. Genoways
 Chuck and Dixie Gerhart
 Mr. and Mrs. Christopher Gerken
 Calvin L. German
 David and Jennifer Giandinoto
 Angelo R. Gibson
 Steve and Chris Gilbert
 David Gilinsky and Katherine Finnegan
 Patrick Gillespie
 John W. Gilliam
 Rita and Ivan Gilreath - Do not list BGC
 Mr. and Mrs. Todd and Denise Gilroy
 Thomas Gilsdorf
 Robert J. Glorvick, Jr.
 Chris and Jen Goble
 Anthony Goff
 Tom and Karrie Goff
 Jeffrey P. Gold, M.D.
 Christine L. Goldsberry
 Gomel Family
 Meg and Jeff Gonka
 Joseph Gonzales
 David Gonzalez
 Deborah Goodkin
 Brad Grabill
 Renata Grafin
 Michelle Greene
 Dixon Greenfield
 Chris Greer
 Beth Greiner
 Robert Gries
 Walt and Lana Griffiths
 Ms. Stephanie L. Griger
 Shari and Lee Grimes
 John and Marla Grose
 Kathy and Mike Gross
 Peggy Grosskopf
 Tali Anne and Gary Grosz
 James & Heidi Grunkemeyer
 Tom Grutsch

Michael P. Guinane
 Debbie and J.C. Gum
 Mr. and Mrs. Dennis and Sherri Gunderson
 Meghan Gunia
 Dan Gunther
 Ms. Kaye Gurss
 Eric Guse
 Alison M. Gutierrez
 Scott D. Haag
 Ms. Crystal P. Haake
 Tim and Kristine Hacker
 Samantha Hagggar
 Janis and Dr. John Haggstrom
 Carol and Howard Hahn
 Chris F. Halfman
 Lisa and Travis W. Hall
 Elizabeth Hall
 Mr. John A. Hall
 Susan and Nigel Hall
 Thomas Halpin
 Patrick Halsted
 Rami and Hollie Hanash
 John and Ibbby Hancock
 Bryan Handlos
 Mrs. Tara L. Hanes
 Brant and Deanna Hanquist
 Al Hansen
 Douglas M. and Cynthia A. Hansen
 Jon and Beth Hansen
 Ken Hansen
 Mr. and Mrs. Anthony and May Hansen
 Quinn Hanson
 Dan and Lisa Hanus
 Jianqiang Hao
 Richard A. Hardin
 Lynn Harland
 Mr. and Mrs. Corbin Harms
 Ms. Kellie R. Harry
 Jolie Harstad
 Cindy Hartigan
 Robert Harty
 Gary and Dana Harvey
 Kelley Harwood
 Valerie Harwood
 Amy and Tony Hatcher
 Christine Hathaway
 Neal Hathaway
 Justin Haugen
 John (Jack) J. Hawk, Sr.
 C. E. Heaney, Jr.
 Kathy and Tom Heaney
 William H. Heavey, Jr.
 Michael and Barbara Hechtner
 Bambi L. Heckerman
 Wade C. Heidemann

Douglas Heimes
 Jon and Laura Heisterkamp
 Margie J. Heller
 Mr. Jerry J. Hempel
 Chandra Henley
 Stephanie L. Henn
 Tiffany Henn
 Ruth and Scott Henneman
 Andrew and Katy Henrichsen
 Dana Henricksen Cheryl Henricksen
 David and Jennifer Henricksen
 Michael D. Henry Katherine N. Henry
 Jamie and Marisa Herbert
 John and Jacque Herdzina
 Steve and Mary Hermansky
 Rita and Roger Hermesen
 Marcos A. Hernandez
 Ms. Elizabeth J. Herr
 Keith and Starr Herrington
 Margaret and David Hershiser
 Mr. and Mrs. John and Lauren Hewitt
 Cecil Hicks and Nicole Brown
 Diane Hicks
 Mr. Kevin Hicks
 Donnie and Darcey Hill
 David Hinderaker
 Jennifer Hinson
 Mr. Paul Hinton
 Sandie Hite
 Byron R. Hobson
 Mr. Douglas Hoff
 Erik Hoiekvam
 Mark and Jenna Hojnicky
 Jake Holdenried Jessica Holdenried
 Tim and Jonna Holland
 Rick Holmes
 Neil & Kate Holstein
 Josh Holte
 John J. Hoodjer
 Mr. Stephen C. Hoover
 Mr. and Mrs. Grag and Kathy Hopkins
 Mr. John Hopkins
 Jason D. Hormann
 Christi Hornick
 Donald and Michele Hotz
 Diana Hough
 Julia A. Hoult
 Jean Hrdlicka
 Jean Hruby
 Tina Hruska
 Jeff Huber
 Monica Huber
 Mr. Frank Hudson
 Jeff and Becki Huether
 Todd Huffman

Kathleen Hughes
 Linda and Dennis Hughes
 Allan and Joanne Hull
 Wood Hull
 Sandra Hulm
 Benjamin Humann
 Doug and Brenda Hummel
 Gail Y. Hunt
 Teresa Coleman Hunter
 Mr. Rodney Hurley
 Scott and Teri Huscroft
 Hasan Hyder
 Scott and Jill Irwin
 John Ivester
 Russel and Renee Iwan
 Michelle Jackson
 Ruth Jamieson
 Mr. and Mrs. Lonnie Janecek
 Grant and Sara Janke
 Mr. Philip J. Janulewicz
 Deborah Janzen
 Mindy M. Jarecki
 John and Mary Jeanetta
 Jeff and Gloria Jensen
 Tom and Mary Ruth Jensen
 David Jesse
 Chad and Eva Jessen
 Matt Jetter
 Jessica Jimenez
 Richard and Janet Jizba
 Cassandra Johnson
 Craig Johnson
 Garry W. and Loraine D. Johnson
 Gary D. Johnson
 James Johnson
 Joy Johnson
 Mr. and Mrs. Andy and Leah Johnson
 Nathan Johnson
 Rich Johnson
 Ryan K. Johnson
 Troy Johnson
 Joel Johnston
 Ms. Jennifer A. Johnston
 Benjamin Jones
 Daniel Jones
 Kathryn Jones
 Keith and Jeanne Jones
 Josephine Jordan and Sal Issaka
 Vince and Dawn Jorn
 Jeff and Kari Jorth
 Vincent Juarez
 Mr. and Mrs. Greg Judkins
 Mike Just
 Ruth and Steven Kable
 Christina Kahler

Mark and Mary Kaipust
 Felicia Hutnick and John Kaiser
 Ms. Leanne Kaiser
 Chris and Marsha Kalkowski
 Scott and Julie Kaminski
 Tonya and Brian Kaminski
 Satya Kamireddi
 Kristen Kampfe
 Jeffrey Karloff
 Ms. Kimberley M. Kaschke
 Matthew Kasselmann
 Cindy Kastens
 Mr. and Mrs. John Kastl
 Vern Kathol
 Kevin Kavanaugh
 Chris Keckeisen
 Ms. Ranae Keckeisen
 Michael Kelly
 Mr. and Mrs. Carl and Robin Kempkes
 Mr. Ronald Kenkel
 Joe and Kate Kenny
 James and Marilyn Kerkhove
 Austin and Erin Kershner
 Tom and Tammy Kielty
 Joshua A. Kimminau
 David King
 Douglas King
 Dylies King
 Larry King
 Jonathan Kinney
 Cynthia Kinning
 Gary W. Kipp
 Mike and Colleen Kirk
 Mr. and Mrs. Kirkebak
 Ned Kirklin
 Patricia O. Kiscoan
 Doug Klahn
 Paula Klassen
 David and Sara Klein
 Jeffrey Klement
 Daniel A. Kletke
 Jami and Brad Kline
 Roxanne Alter and Don Kluthe
 Mr. Robert M. Knapp Jr
 Mr. Gary W. Knapp
 Jude and Stacy Knipper
 Steve Knott
 Jim Knudsen
 Keith Knudsen
 Joseph M. Koch
 Kelly JC Koch
 Tim and Jan Koch
 Michael Koehler
 Al and Kim Koenig
 Christy Kofoed

Kevin and Cindy Kohlscheen
 Vicki and Dave Kolarik
 Christopher Kopiasz
 Corey and Liz Kopiasz
 Michael Korner
 Christopher Koslosky
 Jeffrey Koterba
 Anthony T. Kouba
 Michael Kozisek
 Rebecca Hittner
 Paul and Michaela Kramper
 Chris Kratochvil
 Phil and Denise Kreski
 Santha Krishnan
 K. M. Kroeger
 Shawntell and Bruce Kroese
 Angela Kroymann
 Mr. Brian Kruk
 Derek and Dana Kruse
 Lindsay and Matthew Kruse
 Michael J. Kuester
 Tom and Geri Kunkel
 Renae Kurlmel
 Jacqueline Kuta
 Scott Kvammen
 Dr. Lisa Kwapniowski
 Mack and Jess La Rock
 Karen Lagerstrom
 Tim and Pam Lammers
 Ms. Janet C. Lamoureux
 Gene Lamprecht
 Brian Lancaster
 Jeremy Lang
 Belinda Langendoerfer
 Beverly and Sean Lanoue
 Jennifer Lassek
 Joseph G. Lassen
 Jeffrey Laudin and Kathy Beauchaine
 David Lautenschlager
 Michelle and Michael Lawyer
 Julie Lazure
 Derek Leathers
 Shawn and Michelle Lee
 Weslyene Lee
 Timothy C. Legband
 Sara and Michael Legleiter
 Mr. and Mrs. Mark and Lori Lehman
 Bob and Cathy Lembke
 Kacey and Joe Lempka
 Lori Lentsch
 Jason Lenz
 Ashley Leonard
 Valerie Leonard
 Janet Lepaopao
 Karla Lester

Mr. Roger L. Lewandowski
 Kevin and Kim Lewis
 Roger and Carol Lewis
 Susan Lewis
 Greg & Stacey Lickteig
 Anne and Jeff Lieben
 Joani and Joseph Lillo
 Steve and Amy Lindsay
 Todd Litjen
 Frank Lococo
 Michael T. Loeffler
 Marlon and Laurie Lofgren
 Jerimie Logan
 Michele Lohse
 Aaron Long Keri Long
 David Long
 Robbie Long
 Troy Loseke
 Tom Lowry
 Steven Luby
 Marietta Luellen
 Jude and Nan Lui
 Ronald Lund, Jr.
 Mr. and Mrs. Anil and Parul Luthra
 Marjorie S. Lutz
 Mark and Gabi Lutz
 Marjorie Maas
 Ms. Rebecca MacDonell
 J. Terry Macnamara
 Thomas and Heidi Macy
 Mr. William Thomas Madden
 Brian G. and Susan A. Maher
 Mr. Ted Maine
 Virginia L. Maine
 Mr. Chad Mares
 Nicholas J. Marquardt
 Fran Marshall
 Brian Marta
 Greg Martin
 Heather Ann Martin
 Paul Martin
 Mr. Kevin M. Martin
 Mr. Randy L. Martsching
 Melissa Matczak
 Mark and Julie Matthes
 Grant Matthies
 Martin Matukewicz
 Terrill Maxwell
 Dave Mayberry
 Ryan Mayberry
 Joseph M. Mayer
 Steve Mc Kern
 Corrigan McBride Aguilar and Jerald Aguilar
 Rhonda S. McCarthy
 Mr. Roger A. McCartney

Denise McCauley
 Pam McCawley
 McClary Family
 Ms. Kristine M. McCombs
 Kevin McCormick
 Cynthia McCullough
 Greg and Theresa McDermott
 Ms. Therese McDermott
 Mr. John R. McElvain
 Patrick R. McGill
 Nicole McGovern
 Jeffrey and Leonore McGuire
 Ms. Jennifer McIvor
 Michael and Amy McKay
 Mark McKenzie
 Deborah and Michael McLarney*
 Daniel McLaughlin
 Tim McMahan
 Mark and Dianne McMillan
 Seth McMillan
 Mr. Mitchell R. McVay
 Mr. Craig and Mrs. Kristine McVea
 Joel Medbery
 Robert Meder
 Kenneth and Megan Meier
 Nathan and Lori Meisgeier
 Judith D. Meisinger
 Sam Mele
 Charles Melton
 Mr. and Mrs. Andrew and Amy Melville
 Merri J. Melvin
 Joan Menard
 Barbara Mende
 James and Syvan Merriex
 Jennifer and Michael Merrill
 Jeffrey Scott Meyer
 Mike and Dana Meyer
 Philip and Jane Meyer
 Robert Meyer
 Mr. Matthew Meyer
 Aaron Meyerle
 Jeff & Stacy Mikesell
 Garry and Stevanne Milbourn
 Andrea L. Miller
 Brandi and Michael Miller
 Jeff and Suzanne Miller
 John Miller
 Kent E. Miller
 Mark Miller
 Paul and Lynnie Miller
 Steven T. Miller
 Mr. Chris and Mrs. Amanda Miller
 Mr. Kevin A. Miller
 David Milliman
 Sara Milnes

Michael T. Miskowiec
 Craig Mitchell
 Matthew Modica
 Jacob and Jennifer Mohr
 Stephanie Moline
 Scott Moll
 Tricia Montague
 Nigel B. Moodley
 Brad Moore
 David Moore
 Jessica Moore
 Matt Moore
 Don and Kelli Mooring
 Mr. and Mrs. Kevin J. Moran
 James Morbach
 Cathy J. Morris
 John F. Morris
 Ms. Mindy Morrissey
 Mr. Mark Mossman
 Suzanne Motica
 Cindy Mowery
 Mike and Sigrid Moylan
 Stephanie Mueller
 Mr. and Mrs. David and Michelle Muirhead
 Mr. and Mrs. Tracy Mumford
 Brian J. Mundt
 Murphy Family
 Ms. Tracie E. Murphy
 Donald Murray
 Ms. Catherine Mutz
 Dan Myers
 Liz Nannen
 Eldon R. Naven
 Matthew Neel
 Michael J. Neeson
 Karen R. Nelsen
 Charles and Pamela Nelson
 Chris Christen
 Mark and Cindy Nelson
 Thomas Nelson
 Rudie Nemec
 Cathy Neppel
 Christine Neuharth
 Irina Popa, M.D. and Michael Newcomb
 Lonnie and Debbie Newkirk
 E. R. "Bob" and Phyllis Newman
 Mary J. Newman
 Augie and Stephanie Nguyen
 John H. Nguyen
 Kevin and Cindy Nichols
 Troy and Jeanne Nissen
 Troy and Jeanne Nissen
 Suzanne Nocita
 Mr. Allan S. Noddle
 Sherry and Michael Nohl

Jimmy and Kim Nolan
 Andy Noon
 Sarah and Marty Nordlund
 Travis and Dorine Nordstrom
 Richard A. Norton
 Brenden Nothwehr
 Russell Novak
 Larry and Jan Novicki
 David and Melinda O'Dell
 Russ and Patty Oatman
 Lynette Oberdorfer
 Douglas L. Obermeier
 Doug and Lori Obermier
 Diane K. and Cory J. O'Brien
 Kelli O'Brien
 Tim O'Brien
 Tom and Dawn O'Brien
 Laura O'Connor
 Maureen O'Connor
 Jennifer and Christopher Oehlerts
 Drew Oetjen
 Connie and Dave Ogden
 Susan Ogle
 Danielle M. Ohlman
 Michele Okon
 Douglas S. Oldaker
 John and Jennifer Oliver
 S. Louis Olivera
 Carl and DeAnn Olsen
 Chris and Kathy Olson
 Gary Olson
 Stephanie and Eric Olson
 Mrs. Jean C. Olson
 Matt Ondrejko
 Brian and Giuli Oppliger
 David Orchard
 Anthony Ori
 Paul and Lauren Osborne
 Andrea Oswald
 Eric Oxley
 Brenda Paiz
 Al and Valerie Palimenio
 Ryan and Mara Paradis
 Dan and Elise Parish
 Julie and Shaun Parker
 Andra and Matt Parry
 Shane and Sheryl Parshall
 Anshu Pasricha
 Jan M. Patterson
 Michaele S. Patterson
 Thomas L. Patton
 Jean M. Paul
 Lynn Paul
 Kathi Paulsen
 Charley Paulson

Christopher Peach
 Steven Peake
 Doni Pecoraro
 Timothy and Tricia Penne
 Tom and Judy Penney
 Matthew K. Person
 David R. Pesavento
 Erin Peters
 Janette Petersen
 Charles Peterson
 Kurt and Chris Peterson
 Matthew Peterson
 Michael and Kathleen Peterson
 Tom and Patti Peterson
 John and Julie Petr
 Aaron and Amanda Pfeifer
 Mr. Michael Charles Phelan
 Bill Phillips
 Chris and Jane Phillips Kutak Rock LLP
 Julie Phillips
 Mr. Greg M. Phillips
 Mike and Laurie Pieper
 Tammy and Larry Pike
 Timothy Pilakowski
 Vince and Cynthia Pille
 Lynn and Jeff Pirruccello
 Mr. Thomas R. Pithan
 John Plambeck
 Beverly Player
 Bryan Pleskac
 Brent and Michele Pohlman
 Mr. Kennard Pohlman
 R. Jay Poland
 Chris and Jennifer Polenz
 Greg and Laurie Porter
 Patrick Porter
 Matt Pospisil
 Kari and Shane Potts
 Derrick and Amber Powell
 Michael and Cecilia Powell
 Carrie Powers
 Kenneth M. Powers
 Ms. Kristin M. Pratt
 Kim Preheim
 Mr. Nathan Scott Prellwitz
 Amber and Stephen Preston
 Patrick Prince
 No
 Dwayne and Tinamarie Probyn
 Joe Pruch
 Steven Pruch
 Ms. Qian
 Lawrence and Carmen Quint
 Julie A. Radil
 David and Julie Radowski

Donald and Jonna Radtke
 Bob and Michelle Ramaekers
 Dean Rasmussen
 Thomas Rasmussen
 Lois A. Ratay
 Karen E. Rau
 Justin and Diane Rauner
 Mr. and Mrs. Robert Real
 Karen Rech
 David and Cindy Rector
 Mr. William H. Redick
 Pat and Larry Reding
 Tim and Mindy Reed
 Michele M. Reed-Ball
 Benjamin N. Reicks
 Beau Reid
 J and Leslie Reimer
 Bryan and Dixie Reinecke
 Chris and Melissa Reiner
 Jeff and Janet Reiner
 John Reinhardt
 Mr. and Mrs. Michael Reinhart
 Jeremy and Christy Reinorhl
 Ronald Reisner
 Kevin and Linda Renner
 Julie Reyes and Family
 Rex Rezac
 Remy W. Rice
 James H. Rich III
 Brent and Adrieene Richard
 Wendy and Mike Richard and Family
 Lisa and Charles Richardson
 Todd and Kristin Richardson
 Mr. and Mrs. Scott and Nicole Riche
 Ms. Amber Richter
 John P. Ricketts
 Mary A. Rieschl
 Cris Ringsdorf
 Shane Roberts
 Mr. Daniel A. Roberts
 Travis Robinson
 Dr. Edward B. Roche
 Dr. Victoria F. Roche
 Angela Rock
 Kristine Rock
 Mr. Larry Rock and Dr. Melissa Garner
 Amy Rodrick
 Lloyd and Marlene Roduner
 Nichol E. Rogers
 Laura Rogge
 Todd B. and Janet M. Rogge
 Bill and Carole Ann Rohan
 Ms. Faith K. Rolfsen
 Christopher M. and Nicole E. Rolling
 Debra J. Romberger, M.D.

Randy Root
 Lisa Rosenthal
 Elicea Ross
 Glenn and Pam Ross
 Marcus Ross
 Anthony Rosso
 Rev. Ronald Christopher Rosso
 Michael and Patrice Roth
 Rother Family
 Jason P. Rothman
 Randy and Robbie Rotschafer
 Don Rowe
 Liz and Dan Rubin
 Loree Runyan-Pick
 Neil and Natalie Runyon
 Patrick and Cynthia Rupp
 Erin Russell
 G. Richard and Carol L. Russell
 James M. Russell
 Joel Russell and Erin Swanson Russell
 Ms. Jaimie Ryan
 Mark Sabata
 Rob Salerno
 Craig and Molly Sall
 Mr. Brian D. Salmon
 Pallavi Samant
 Derrek Sammons
 Jill Samuelson
 Katie Sanders
 Becky Sandiland
 Barb and Chris Sanford
 Lynne D. and Patrick J. Sangimino
 Sandra Santos
 Deino Sather
 Jeff and Maria Sauvageau
 Greg and Darbi Scaglione
 Steven A. and Susan K. Scanlan
 Scott Schaefer
 Tracy and Doug Schaefer
 Joe and Gaye Lynn Schaffart
 Kendall Scheer
 Claire and Jim Schelble
 Greg and Lori Schilling
 Matt Schilling
 Bob and Theresa Schmidt
 Christopher Schmidt
 Daniel Schmidt
 Mr. Alan J. Schmitz
 Jim and Peg Schneider
 Schomers Family
 Jeff W. Shovanec
 Ann and Mike Schow
 Jeff and Brandy Schreiner
 Sue Schreiner
 Brad Schroeder

Dannee and Jason Schroeder
 Randy Schroeder
 Brandee Schultz
 Philip M. Schultz
 Kevin W. Schwarting
 Mr. and Mrs. Curt Schwartzkopf
 Shelly and Kevin Schwedhelm
 John Schwietz
 Mr. Dillon S. Scott
 Brendy Sealock
 Scott and Molly Searl
 Juliann Sebastian
 Jeff and Julie Sebree
 Charles V. Sederstrom, Jr.
 Billy And Jill Seitz
 Frank R. Semin
 Brett and Marci Sesker
 Jacob Setran
 Michelle and Nathan Settles
 Zoe H. Shall
 Mick and Marcia Shanahan
 Kristine K. Shaner
 Will and Julie Sheets
 Jeffrey Sheldon
 Susan Hendrick and Sandeep Sheth
 James Shields
 Greg Shimonek
 Mr. and Mrs. Don and Bobbi Jo Shiu
 Russel Shue
 Karen Shuler
 Jesse and Corrie Shumaker
 Melissa and Chad Siedlik
 Ms. Terri L. Sills
 Rhonda Silvey
 Adam Simeon
 Mr. Carl Simmons
 Mark T. Simon
 Jennifer LW Simpson
 Steven and Kathy Sinclair
 Jasbir and Renu Singh
 Ms. Nancy A. Sinnett
 Michael Sitorius
 B J Skar
 Tom Skryja
 William L. Sloane
 Scot Sloboth
 Bryan Slone
 Debra Smallwood
 Al and Vanessa Smiley
 Anthony M. Smith
 Carl V. Smith, M.D.
 Mr. Smith
 Ryan O. Smith
 Mr. Charles A. Smith
 Michelle Smithberg

Lori Snyder
 Monique Snyder
 Leonard and Kate Sommer
 Mark Soulliere
 Laura Sparks
 Hugh and Colleen Spellman
 Shirley Spieker
 Erica Spier
 Clint Sporhase
 Karen and Tony Spurlock
 Matthew Spyers
 Kip and Deborah Squire
 Adam R. St Germain
 Michael Staffenbeal
 Steve and Kris Stapp
 Christopher Stark
 Scott Stark
 Judy and Bill Startzer
 Jason Steele
 Julie A. Steele
 Wayne Steele
 Mr. and Mrs. Michael Stein
 Mike Stemm
 Michelle Stenslokken
 Ms. Karen E. Stevens
 James E. Stewart
 Kurtis Stewart
 James Stith
 Bradley K. Stock
 Grace Stoddard
 Mary and Craig Stoffel
 Deborah S. Stogdill
 Karen Stott
 Desiree J. Stotts
 Ray and Kay Stoupa
 Paul and Dawn Straub
 Melvin M. Stuart
 Robert and Sharon Stubbe
 Nannette Sudman
 Jack Sullivan
 Joseph T. Sullivan
 Ashley Sutera
 Janet Sutera
 Sandra Suver
 Krystina M. Svajgl
 Lynn and Jim Svoboda
 Mr. Todd J. Swackhamer
 Carole Swanson
 Sarah Swanson
 Ms. Joanna P. Swanson
 Michael Swartz
 Twyla Swearingen
 Deanna L. Swertzic
 Mr. and Mrs. Shane Swope
 Deborah L. Talada

Mr. Frank J. Talarico
 James and Kathy Talcott
 Ann Tanis
 Thomas G. Tape
 Mr. Brad Taylor
 Phil Taylor
 Ron and Joanie Tekippe
 Dolores Terwey
 Tamara Teten
 Ms. Julie C. Thacker
 Tim and Daena Thalken
 Betty and Gene Theel
 Randy and Christa Thelen
 Mike Thesing
 Zach and Catherine Thiemann
 Mr. Bryan W. Thier
 Megan Thom
 Chad Thomas
 Joseph Thomas
 Steve and Lisa Thomas
 Carolyn S. Thompson
 Kathy Thompson and Robert Rea
 Kevin Thompson
 Mike and Ann Thompson
 Mr. Jon S. Thompson
 Ms. Renee L. Thompson
 Wallace Thoreson and Mary Green
 John Thurber
 Greg and Jennifer Tiarks
 Melissa Tibbits and Jason Weaver
 Dina and Charles Tilgner
 Daniel and Liz Tipton
 Steve Tisinger
 Rick & Holly Tiwald
 Ann E. and Kurt F. Tjaden
 Gerry and Rosie Tomka
 David and Kara Tomlinson
 Janice Tompkins
 Kevin Torczon
 Andres and Heather Torres
 David and Wendy Treinen
 Chad and Kathy Tremel
 Josh and Michelle Tresemer
 Douglas A. and Sherri A. Troupe
 Mr. Robert T. Troupe
 Sheila R. Trueblood
 Mr. John Turner
 Tammy Tusa
 Mr. Arlen and Mrs. Debra Tweed
 Pam and Greg Twist
 Marcus Tyrance
 Joe and Christy Ulrich
 Julia and Jim Ulrich
 Mr. and Mrs. Ultican
 Sheri R. Uno

Mark Unverzagt
 Dalan Urquhart
 Thomas J. Vaiskunas
 Les Valentine
 Mr. and Mrs. Greg Van Dyke
 Kimberly Van Horn
 Bobbie Van Oeveren
 Jeffrey A. Vander Linden
 Travis W. Vanderpool II
 Joel and Leslie VanderVeen
 Vinnie VanHoolandt
 Jay and Amy Vankat
 David VanSickle
 Tim and Julie Vasquez
 Yuri and Julie Veomett
 Joan E. Villanueva
 Leslie J. Volk
 Tom and Sandy Von Riesen
 Gary E. Voogd
 Justin and Nicole Vossen
 Stephen Wade
 Jeff Wageman
 John Wagner and Carolyn McNamara
 Louis Tracy Shedd-Wagner
 Michael and Shannon Walenta
 Ms. Judith D. Walker
 Troy and Shelly Waller
 Kay and Tim Ward
 Dr. Phyllis I. Warkentin and Peter F. Coccia
 Cheri Warren
 Dave Warren
 Rich Warren
 Tara and Jeff Warren
 Thomas H. Warren Sr.
 Mr. Rodney Warren
 Joe and Carol Waszak
 Joshua Watkins
 Mark and Diana Watton
 Ryan J. Watzke
 William J. Wax
 Mr. Coleman Weber
 Alan L. Weed
 Jeff Weeks
 Jim and Kim Weeks
 Jim Wegman
 Mr. James Thomas Weidner
 Jim and Francie Weis
 Craig Weiss
 Kimberly Weiss
 Roger Wells
 Gary and Sharon Welna
 Kim and Guy Welton
 Mr. Michael Werner
 Nicholas and Christine Wertzberger
 Kenneth and Valerie West

Ms. Ashliegh Anne West Leshar
Julia K. Westerfield
Mark Westergard
Donald Wetmore
Wendy Whalen
Amy Wheeler
Sharon Wheeler
Steven Whetzel
Daniel Whisler
Mr. Brian M. White
Ms. Rosemary White
Zerlaine M. Wilcoxon
Roberta Wilhelm and Vic Gutman
Linda M. Wilkie
Mr. W. Bruce Wilkie
Craig Wilkins
Karen Willberg
Matthew Willburn
Andrew P. Williams
Ann Williams
Jo Williams and Steve Urban
Mr. Derek P. Williams
Pamela S. Williams
John and Laurel Willis
Robert and Mary Jo Wilmes
Angela Wilson
Carole and Andy Wilson
Phyllis Wilson
Mr. Gregory T. Wilson
Sarah A. Wiltse
Tanya Winegard
Joe and Lori Wingerter
Mr. David T. Wingfeild
David Wirka
Dan Witthaus
Bradley Wittler
Mr. John M. Witzke
Brandy Wojtkiewicz
Mark Wolf
Vickie Wonder
Gerette and Russ Wonderly
Andrew and Lindsey Wong
Angel Woodard
Mr. and Mrs. Chris and Stephanie Worley
Thomas Wortmann
Joann K. Wright
Sue and Ken Wright
Al Wunderlich
Jessica L. Wurtz
Joe Wurtz
Ms. Sara E. Wyant
Andy Xydakis
Ann Yager
Carol M. York
Stephen L. York

Heather Young and Wayne Young Jr.
Melissa Young
Mr. Donghui Yuan
Jason and Alyssa Zabloudil
Mr. Mark Zachmeyer
Lorrie Zakrewski
Lori Zarkowski
Sandra W. Zdan
Shelby Zeleny
Mr. Jon A. Zellars
Joanie and Rowen Zetterman
Ken Zhen
Sandy Zidon
Bradley G. Zielie
Risa Zimmerman
Carrie Zoucha

335 Anonymous Donors

SUPPLEMENT

1. To view our 2025 Goals document:

<http://uwm.web1.den.waveinteractive.com/media/1938/2025-goals.pdf>

2. To view a complete list of the agencies and programs that we fund:

<http://www.unitedwaymidlands.org/investment>

3. To view a list of our corporate partnerships:

<http://www.unitedwaymidlands.org/partnerships>

3. To view our 2018 campaign video:

<http://www.unitedwaymidlands.org/report-community-stories-2018/>

4. To view the Smith “Citizens of the Year” video:

<http://www.unitedwaymidlands.org/2018-citizens/>

5. To view our audited financial statements and Form 990s:

<http://www.unitedwaymidlands.org/about/financials/>

6. To view photos from our past year:

<http://www.unitedwaymidlands.org/uwm-report-gallery-2018/>